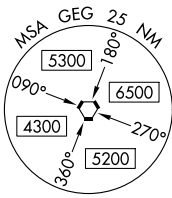
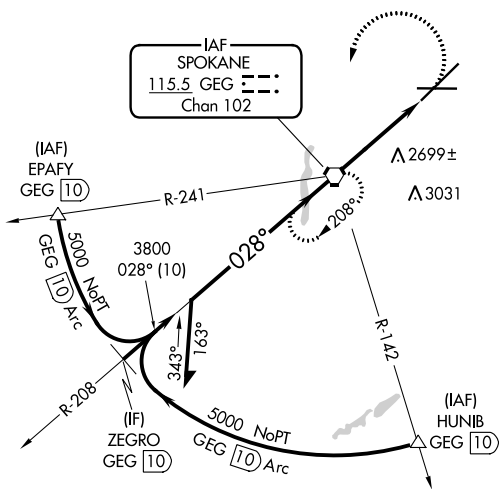


VORTAC GEG <b>115.5</b> Chan <b>102</b>	APP CRS <b>028°</b>	Rwy Idg <b>11002</b> TDZE <b>2385</b> Apt Elev <b>2385</b>
---	------------------------	--

# VOR RWY 3

SPOKANE INTL (GEG)

<b>⚠</b> Circling NA for Cat E southeast of Rwy 3-21. For inop ALS, increase S-3 Cat C/D/E visibility to 1 1/8 SM.	ALSF-2 	MISSED APPROACH: Climbing left turn to 4200 direct GEG VORTAC and hold, continue climb-in-hold to 4200.		
ATIS <b>124.325 254.375</b>	SPOKANE APP CON <b>123.75 282.25</b> (205°-025°) <b>133.35 263.0</b> (026°-204°)	SPOKANE TOWER <b>118.3 278.3</b>	GND CON <b>121.9 348.6</b>	CLNC DEL <b>127.55</b>



NW-1, 25 FEB 2021 to 25 MAR 2021

NW-1, 25 FEB 2021 to 25 MAR 2021



ELEV 2385	<b>D</b> TDZE 2385
-----------	--------------------

2370 ± A

0.5% DOWN  
0.8% UP  
11002 X 150  
8199 X 150  
2505  
2453  
26  
TWR 2651

028° 4.1 NM from FAF

TDZ/CL Rws 3 and 21  
REIL Rws 8 and 26  
HIRL Rwy 3-21  
MIRL Rwy 8-26

FAF to MAP 4.1 NM					
Knots	60	90	120	150	180
Min:Sec	4:06	2:44	2:03	1:38	1:22

VGSIs and descent angles not coincident (VGSIs Angle 3.00/TCH 69).

Remain within 15 NM

4200

208°

028°

3800

3.10° TCH 55

GEG VORTAC

GEG 2.5

2.5 NM

1.6 NM

CATEGORY	A	B	C	D	E
S-3	2960/24	575 (600-1/2)	2960-1 1/4	575 (600-1 1/4)	
<b>C</b> CIRCLING	2960-1 575 (600-1)	2980-1 595 (600-1)	3300-2 3/4 915 (1000-2 3/4)	3400-3	1015 (1100-3)