

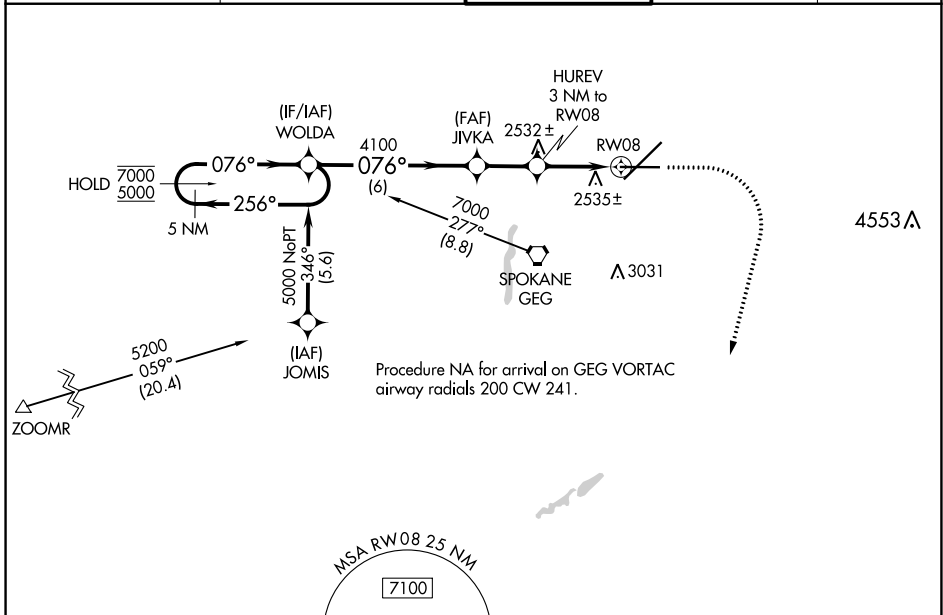
WAAS CH 48801 W08A	APP CRS 076°	Rwy Idg TDZE Apt Elev	8199 2376 2385
--	------------------------	-----------------------------	---

RNAV (GPS) Y RWY 8

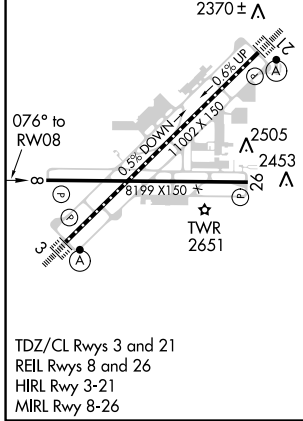
SPOKANE INTL (GEG)

RNP APCH.	MISSED APPROACH: Climb to 2900, then climbing right turn to 6000 direct ATOXE and hold.
<p>▼ For uncompensated Baro-VNAV systems, LNAV/VNAV NA below -18°C or above 52°C.</p>	

ATIS 124.325 254.375	SPOKANE APP CON 123.75 282.25 (205°-025°) 133.35 263.0 (026°-204°)	SPOKANE TOWER 118.3 278.3	GND CON 121.9 348.6	CLNC DEL 127.55
--------------------------------	--	-------------------------------------	-------------------------------	---------------------------



ELEV 2385	D	TDZE 2376
-----------	----------	-----------



VGSi and RNAV glidepath not coincident (VGSi Angle 3.00/TCH 45).				
5 NM Holding Pattern WOLDA	JIVKA 4100	HUREV 3 NM to RW08	2900 6000 ATOXE	*LNAV only.
7000 ← 256° 5000 → 076°	076° →	4100 *3400	*1.2 NM to RW08 RW08	
GP 3.00° TCH 60	6 NM	2.1 NM	1.8 NM	1.2
CATEGORY	A	B	C	D
LPV DA	2576-3/4		200 (200-3/4)	
LNAV/VNAV DA	2834-1 1/2		458 (500-1 1/2)	
LNAV MDA	2800-1	424 (500-1)	2800-1 1/4	424 (500-1 1/4)

NW-1, 25 FEB 2021 to 25 MAR 2021

NW-1, 25 FEB 2021 to 25 MAR 2021