

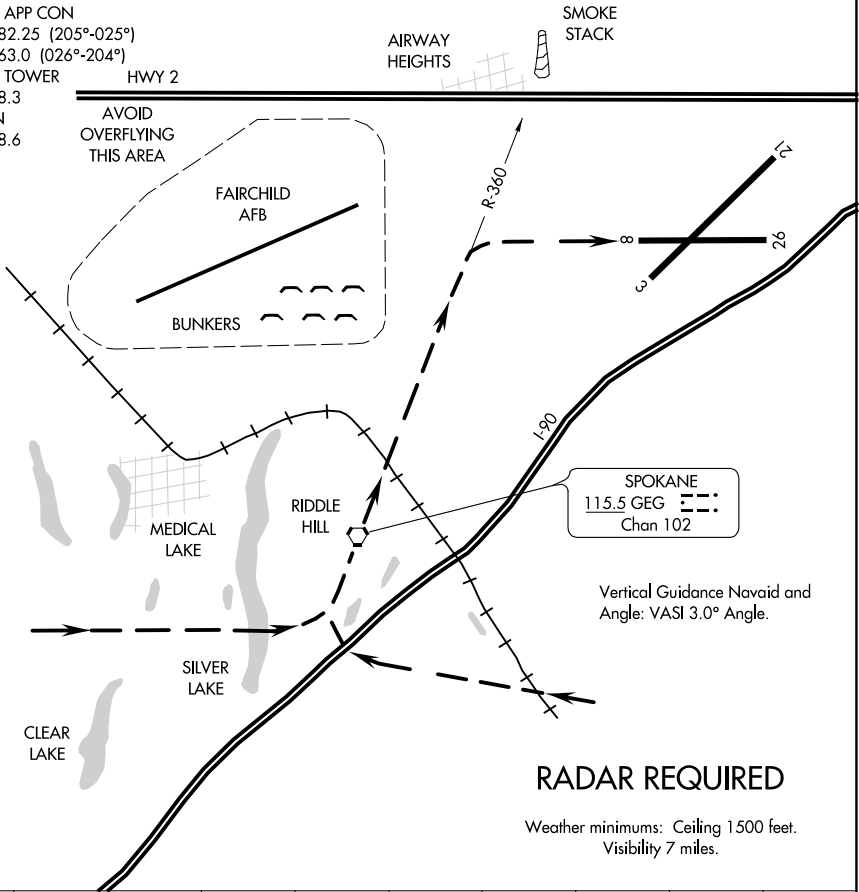
19003

RIDDLE HILL VISUAL RWY 8

AL-403 (FAA)

SPOKANE INTL (GEG)
SPOKANE, WASHINGTON

ATIS
 124.325 254.375
 SPOKANE APP CON
 123.75 282.25 (205°-025°)
 133.35 263.0 (026°-204°)
 SPOKANE TOWER
 118.3 278.3
 GND CON
 121.9 348.6
 CLNC DEL
 127.55
 UNICOM
 122.950



SPOKANE
 115.5 GEG
 Chan 102

Vertical Guidance Navaid and Angle: VASI 3.0° Angle.

RADAR REQUIRED

Weather minimums: Ceiling 1500 feet.
 Visibility 7 miles.

1 NM	2	3	4	5	6	7	8	9
------	---	---	---	---	---	---	---	---

RIDDLE HILL VISUAL APPROACH RWY 8
 PROCEDURE NOT AUTHORIZED AT NIGHT.

NW-1, 25 FEB 2021 to 25 MAR 2021

NW-1, 25 FEB 2021 to 25 MAR 2021

RIDDLE HILL VISUAL RWY 8

Amdt 1 03JAN19

47°37'N - 117°32'W

SPOKANE, WASHINGTON
SPOKANE INTL (GEG)