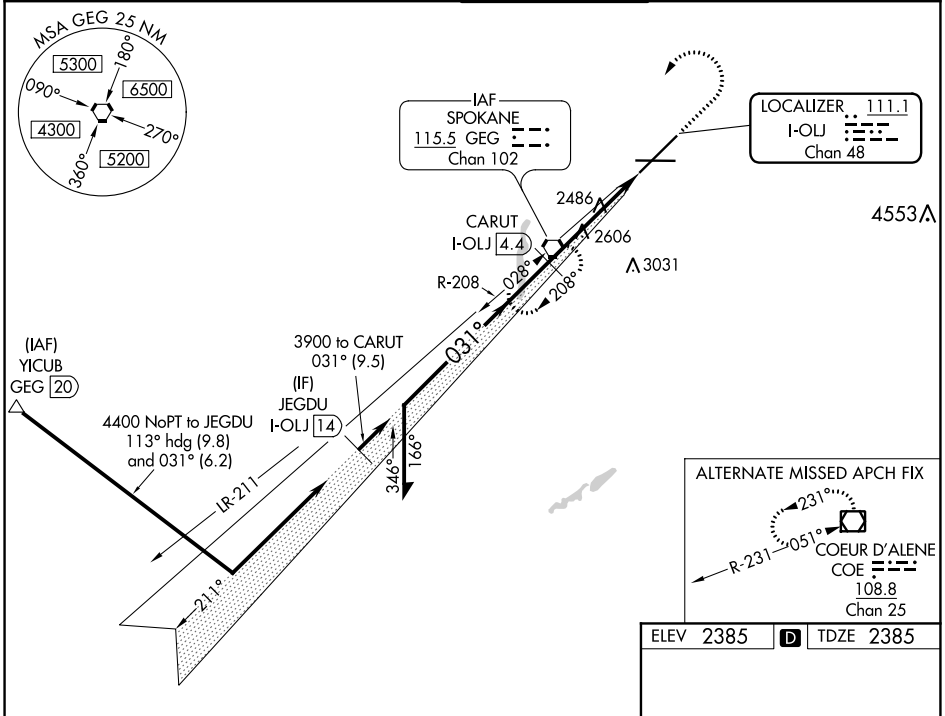


| | | | |
|---|------------------------|---|--------------|
| LOC/DME I-OLJ 111.1 Chan 48 | APP CRS 031° | Rwy Ldg TDZE 2385 Apt Elev 2385 | 11002 |
|---|------------------------|---|--------------|

ILS RWY 3 (SA CAT I)

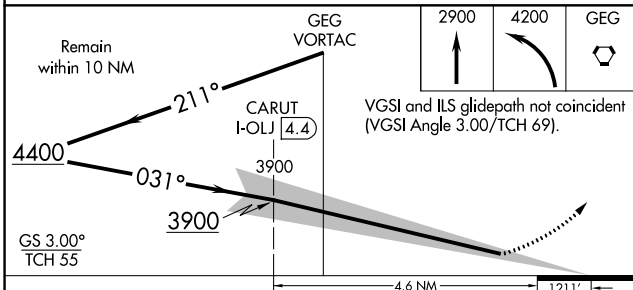
SPOKANE INTL (GEG)

| | | | | |
|--|--------------------------------|--|-------------------------------------|-------------------------------|
| Requires specific OPSPEC, MSPEC, or LOA approval and use of HUD to DH. | ALSIF-2 | MISSED APPROACH: Climb to 2900 then climbing left turn to 4200 direct GEG VORTAC and hold. | | |
| | ATIS 124.325 254.375 | SPOKANE APP CON 123.75 282.25 (205°-025°) 133.35 263.0 (026°-204°) | SPOKANE TOWER 118.3 278.3 | GND CON 121.9 348.6 |

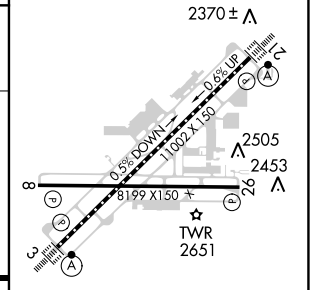


NW-1, 25 FEB 2021 to 25 MAR 2021

NW-1, 25 FEB 2021 to 25 MAR 2021



| | | |
|-----------|---|-----------|
| ELEV 2385 | D | TDZE 2385 |
|-----------|---|-----------|



| | | | | |
|----------|-----------------------|---|---|---|
| CATEGORY | A | B | C | D |
| S-ILS 3 | RA 154/14 150 DA 2535 | | | |

SA CATEGORY I ILS - SPECIAL AIRCREW & AIRCRAFT CERTIFICATION REQUIRED

TDZ/CL Rwy 3 and 21
REIL Rwy 8 and 26
HIRL Rwy 3-21
MIRL Rwy 8-26