

WAAS CH 86623 W30A	APP CRS 306°	Rwy Idg TDZE 2456 Apt Elev 2458
--	------------------------	---

RNAV (GPS) RWY 30

DAWSON COMMUNITY (GDV)

RNP APCH.

▼ For uncompensated Baro-VNAV systems, LNAV/VNAV NA below -19°C or above 28°C. When local altimeter setting not received, procedure NA. Rwy 30 helicopter visibility reduction below ¾ SM NA.

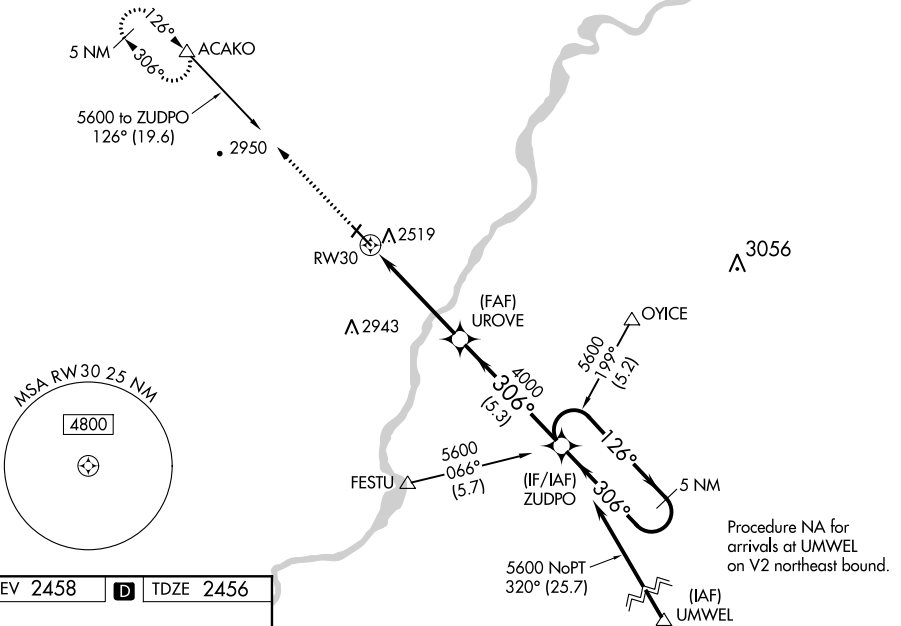
MISSED APPROACH: Climb to 6000 direct ACAKO and hold, continue climb-in-hold to 6000.

AWOS-3PT
135.075

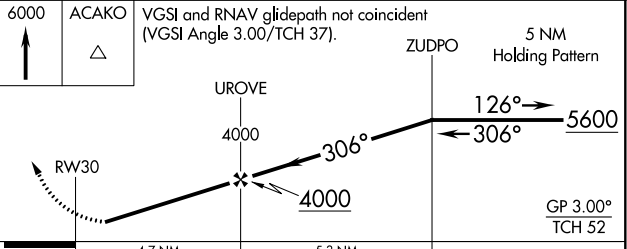
SALT LAKE CENTER
126.85 305.2

UNICOM
122.8 (CTAF) 0

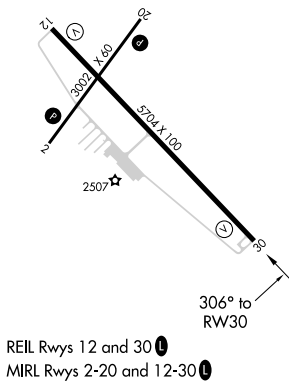
Procedure NA for arrivals at ACAKO on V465 northeast bound.



ELEV 2458 **D** TDZE 2456



CATEGORY	A	B	C	D
LPV DA		2706-1	250 (300-1)	
LNAV/VNAV DA		2706-1	250 (300-1)	
LNAV MDA		2780-1	324 (400-1)	
CIRCLING	2840-1 382 (400-1)	2920-1 462 (500-1)	2920-1½ 462 (500-1½)	3020-2 562 (600-2)



NW-1, 25 FEB 2021 to 25 MAR 2021

NW-1, 25 FEB 2021 to 25 MAR 2021