

WAAS CH <b>40423</b> <b>W12A</b>	APP CRS <b>126°</b>	Rwy Idg TDZE Apt Elev	<b>5704</b> <b>2458</b> <b>2458</b>
----------------------------------------	------------------------	-----------------------------	-------------------------------------------

# RNAV (GPS) RWY 12

DAWSON COMMUNITY (GDV)

RNP APCH.

▼ For uncompensated Baro-VNAV systems, LNAV/VNAV NA below -19°C or above 28°C. When local climeter setting not received, procedure NA. Rwy 12 helicopter visibility reduction below 3/4 SM NA.

MISSED APPROACH: Climb to 6000 direct ZORAS and on track 060° to YAFLU and hold, continue climb-in-hold to 6000.

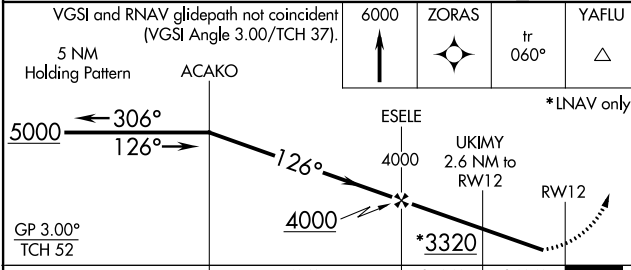
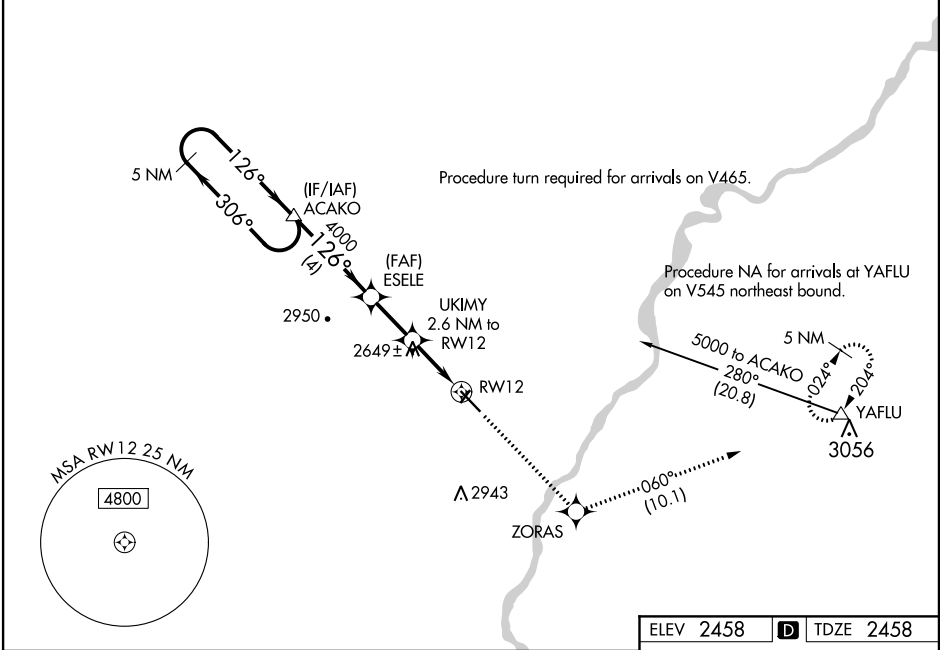
AWOS-3PT  
**135.075**

SALT LAKE CENTER  
**126.85 305.2**

UNICOM  
**122.8 (CTAF) 0**

NW-1, 25 FEB 2021 to 25 MAR 2021

NW-1, 25 FEB 2021 to 25 MAR 2021



ELEV 2458	D	TDZE 2458
-----------	---	-----------

CATEGORY	A	B	C	D
LPV DA		2708-1	250 (300-1)	
LNAV/VNAV DA		2708-1	250 (300-1)	
LNAV MDA	2900-1	442 (500-1)	2900-1 3/8	442 (500-1 3/8)
CIRCLING	2900-1 442 (500-1)	2920-1 462 (500-1)	2920-1 1/2 462 (500-1 1/2)	3020-2 562 (600-2)

