

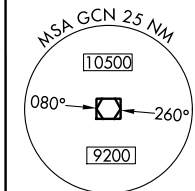
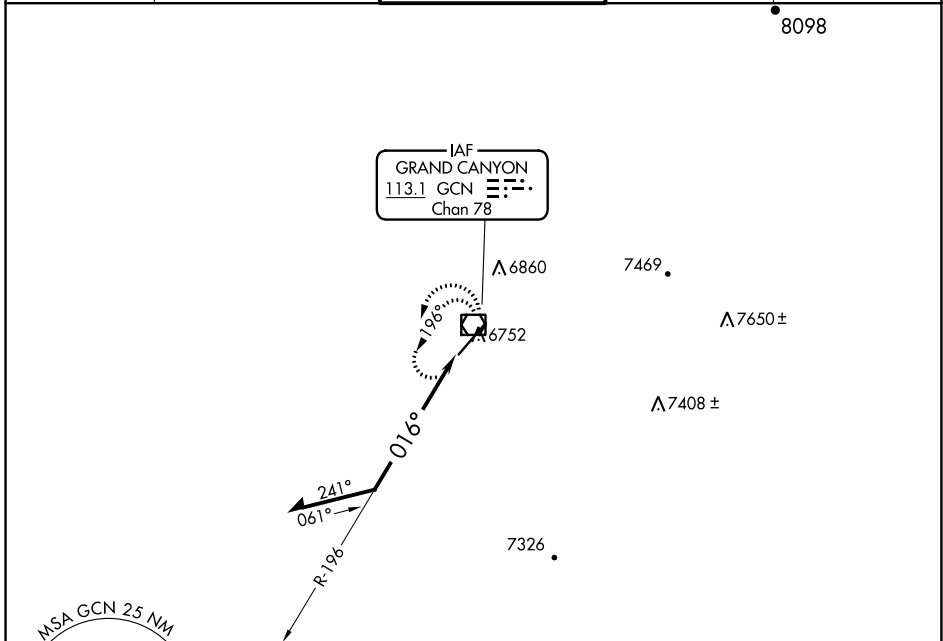
VOR/DME GCN <b>113.1</b> Chan 78	APP CRS <b>016°</b>	Rwy Idg <b>8999</b> TDZE <b>6556</b> Apt Elev <b>6609</b>
--	------------------------	---

# VOR RWY 3

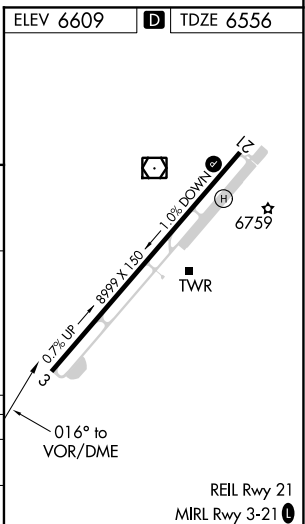
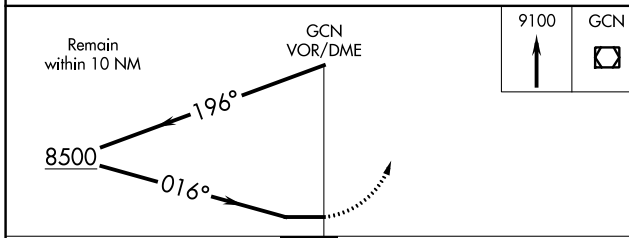
GRAND CANYON NATIONAL PARK (GCN)

**⚠** Rwy 3 helicopter visibility reduction below 3/4 SM NA. MISSED APPROACH: Climb to 9100 in GCN VOR/DME holding pattern.

ATIS <b>124.3</b>	LOS ANGELES CENTER <b>124.85 319.2</b>	CANYON TOWER * <b>119.0 (CTAF) 0</b>	GND CON <b>121.9</b>	UNICOM <b>122.95</b>
----------------------	---	---	-------------------------	-------------------------



Descend in GCN VOR/DME holding pattern to 11000 before commencing procedure turn.



CATEGORY	A	B	C	D
S-3	7180-1	624 (600-1)	7180-1 <sup>3</sup> / <sub>4</sub>	624 (600-1 <sup>3</sup> / <sub>4</sub> )
<b>C</b> CIRCLING	7180-1 571 (600-1)	7200-1 591 (600-1)	7280-2 671 (700-2)	7620-3 1011 (1100-3)

SW-4, 25 FEB 2021 to 25 MAR 2021

SW-4, 25 FEB 2021 to 25 MAR 2021