

WAAS CH <b>93629</b> <b>W03A</b>	APP CRS <b>025°</b>	Rwy Idg TDZE <b>764</b> Apt Elev <b>764</b>	<b>5792</b>
--	------------------------	---	-------------

# RNAV (GPS) RWY 3

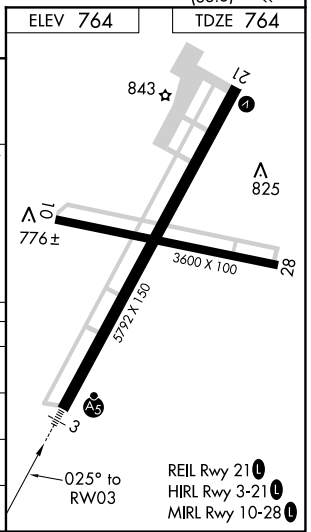
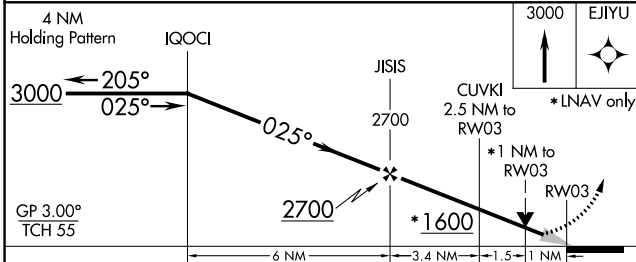
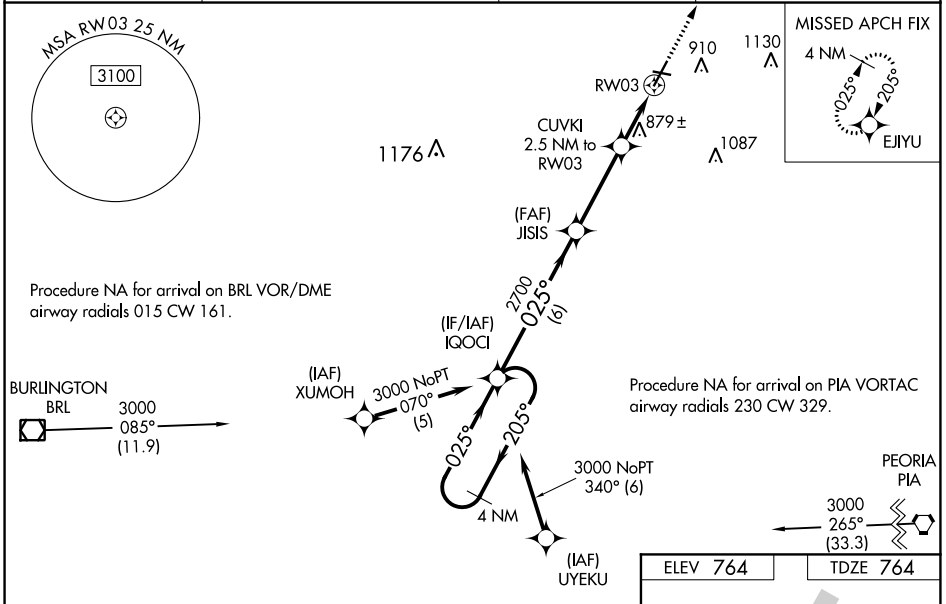
GALESBURG MUNI (GBG)

**⚠** DME/DME RNP-0.3 NA. VDP and Baro-VNAV NA when using Maccomb altimeter setting. When local altimeter setting not received, use Maccomb altimeter setting and increase all DA 71 feet and all MDA 80 feet, increase LNAV/VNAV visibility to ¾ all Cats, increase LNAV Cat C/D visibility to 1. For uncompensated Baro-VNAV systems, LNAV/VNAV NA below -16°C (4°F) or above 39°C (102°F). Circling to Rwy 10 NA at night. For inoperative MALSR, increase LNAV/VNAV visibility to ¾ all Cats. For inoperative MALSR when using Maccomb altimeter setting, increase LPV visibility to ¾ all Cats, increase LNAV Cats C/D visibility to 1¾.

**MALSR**  
AS

**MISSED APPROACH:**  
Climb to 3000 direct EJIYU and hold.

AWOS-3 <b>118.975</b>	QUAD CITY APP CON * <b>133.275 257.8</b>	CLNC DEL <b>120.7</b>	UNICOM <b>123.0 (CTAF)</b> <b>📞</b>
--------------------------	---	--------------------------	--



CATEGORY	A	B	C	D
LPV DA		964-½	200 (200-½)	
LNAV/VNAV DA		1060-½	296 (300-½)	
LNAV MDA	1140-½	376 (400-½)	1140-5/8	376 (400-5/8)
CIRCLING	1220-1	456 (500-1)	1220-1½ 456 (500-1½)	1340-2 576 (600-2)

EC-3, 25 FEB 2021 to 25 MAR 2021

EC-3, 25 FEB 2021 to 25 MAR 2021