

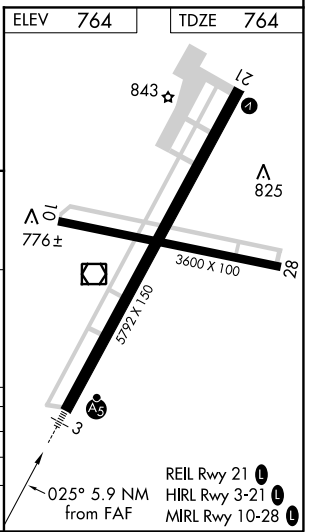
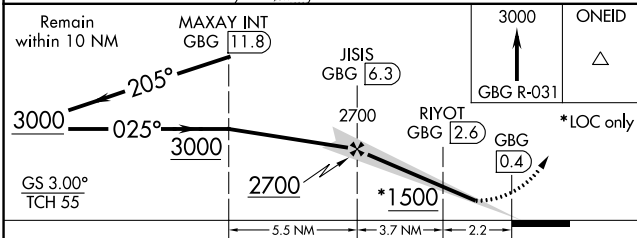
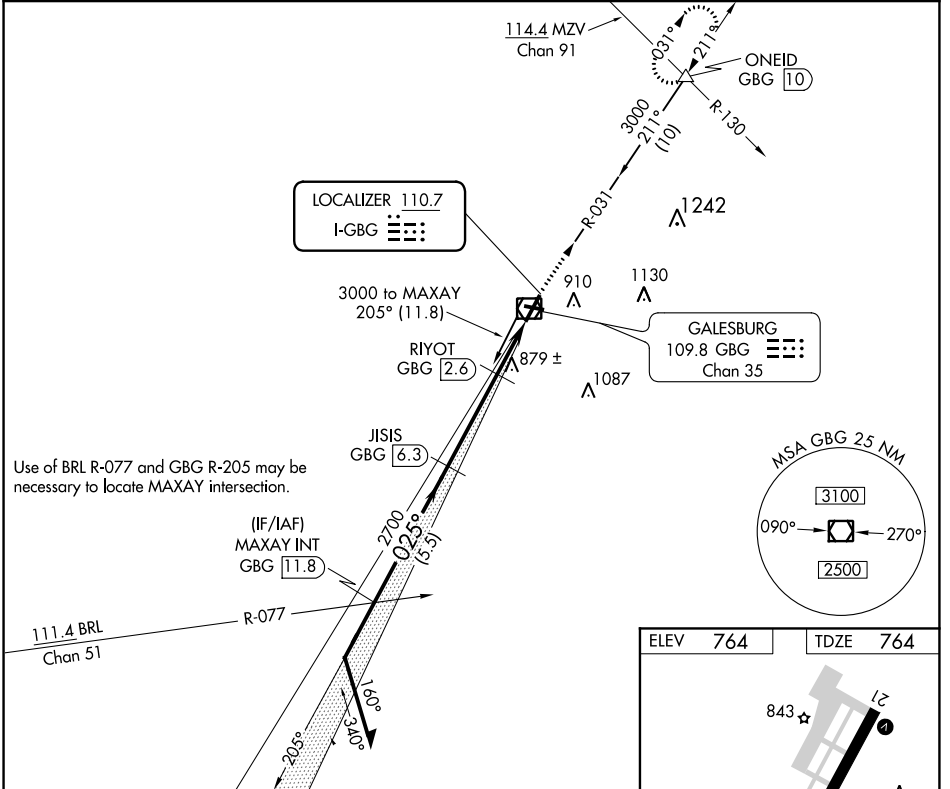
|                           |                        |                             |   |
|---------------------------|------------------------|-----------------------------|---|
| LOC I-GBG<br><b>110.7</b> | APP CRS<br><b>025°</b> | Rwy Idg<br>TDZE<br>Apt Elev | <b>5792</b><br><b>764</b><br><b>764</b> |
|---------------------------|------------------------|-----------------------------|---|

# ILS or LOC/DME RWY 3

GALESBURG MUNI (GBG)

|  |                                  |  |
|--|----------------------------------|--|
| <p><b>NA</b></p> <p>◀ Circling to Rwy 10 NA at night. For inoperative ALS, increase S-LOC 3 Cat C/D visibility to 1½ SM. For inoperative ALS when using Macomb altimeter setting, increase S-ILS 3 all Cats visibility to ¾ SM, increase S-LOC 3 Cat C/D visibility to 1¾ SM. When local altimeter setting not received, use Macomb altimeter setting and increase all DA 71 feet, and all MDA 80 feet, increase S-LOC 3 Cat C/D to 1.</p> | <p>MALSR</p>                     | <p>MISSED APPROACH:<br/>Climb to 3000 on GBG VOR/DME R-031 to ONEID INT/GBG 10 DME and hold.</p> |
|  | <p>AWOS-3<br/><b>118.975</b></p> | <p>QUAD CITY APP CON ★<br/><b>133.275 257.8</b></p>  |

|   |
|---|
| <p>UNICOM<br/><b>123.0 (CTAF) 0</b></p> |
|---|



| CATEGORY | A                  | B | C                  | D                  |
|----------|--------------------|---|--------------------|--------------------|
| S-ILS 3  | 964-½ 200 (200-½)  |   |                    |                    |
| S-LOC 3  | 1160-½ 396 (400-½) |   | 1160-¾ 396 (400-¾) |                    |
| CIRCLING | 1220-1 456 (500-1) |   | 1220-½ 456 (500-½) | 1340-2 576 (600-2) |

EC-3, 25 FEB 2021 to 25 MAR 2021

EC-3, 25 FEB 2021 to 25 MAR 2021