

| | | | |
|--|------------------------|-----------------------------|---|
| WAAS CH 53518 W17A | APP CRS 174° | Rwy Idg TDZE Apt Elev | 3898 822 824 |
|--|------------------------|-----------------------------|---|

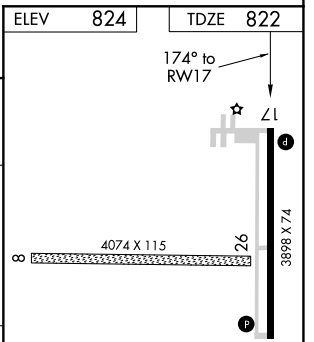
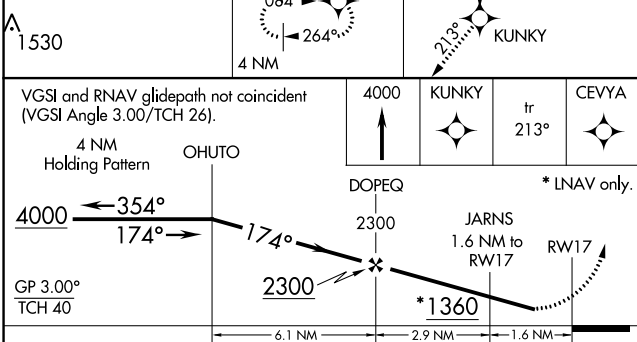
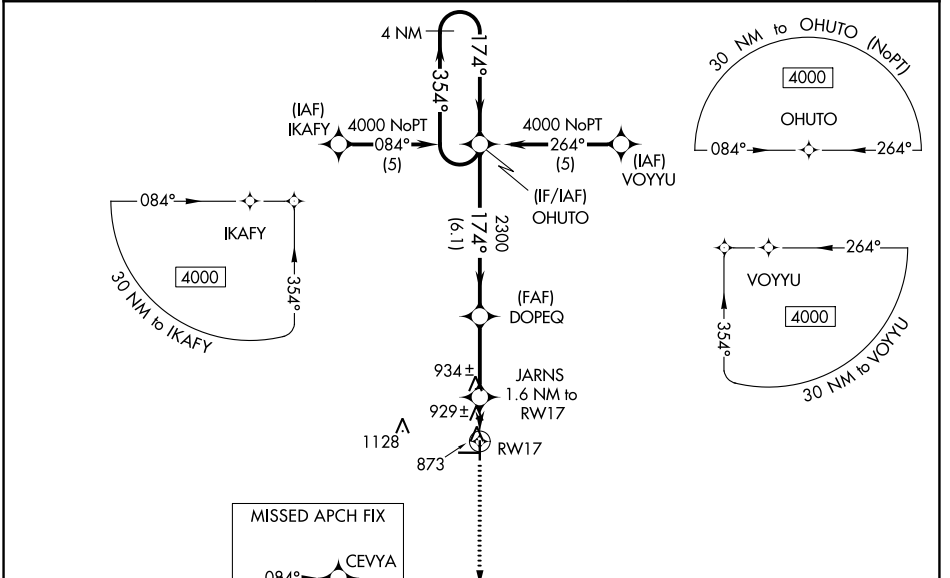
RNAV (GPS) RWY 17

HUTSON FIELD (GAF)

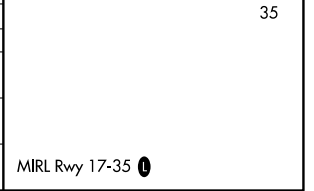
⚠ NA For uncompensated Baro-VNAV systems, LNAV/VNAV NA below -1.6°C (4°F) or above 54°C (130°F). DME/DME RNP-0.3 NA. Visibility reduction by helicopters NA. When local altimeter setting not received, use Grand Forks Intl altimeter setting and increase all DA 69 feet and all MDA 80 feet. Increase LPV and LNAV/VNAV all Cats and LNAV Cat C visibility ¼ mile. Baro-VNAV NA when using Grand Forks Intl altimeter setting.

MISSED APPROACH: Climb to 4000 direct KUNKY and on track 213° to CEVYA and hold, continue climb-in-hold to 4000.

| | | |
|--------------------------|---|-------------------------------|
| AWOS-3 118.625 | GRAND FORKS APP CON 118.1 318.1 | UNICOM 122.8 (CTAF) |
|--------------------------|---|-------------------------------|



| CATEGORY | A | B | C | D |
|--------------|---------|--------------|-------------------------|----|
| LPV DA | 1072-1 | 250 (300-1) | | NA |
| LNAV/VNAV DA | 1228-1½ | 406 (500-1½) | | NA |
| LNAV MDA | 1200-1 | 378 (400-1) | | NA |
| CIRCLING | 1340-1 | 516 (600-1) | 1340-1½ 516 (600-1½) | NA |



NC-1, 25 FEB 2021 to 25 MAR 2021

NC-1, 25 FEB 2021 to 25 MAR 2021