

WAAS CH <b>65717</b> W20A	APP CRS <b>195°</b>	Rwy Idg <b>5900</b> TDZE <b>984</b> Apt Elev <b>984</b>
---------------------------------	------------------------	---

# RNAV (GPS) RWY 20

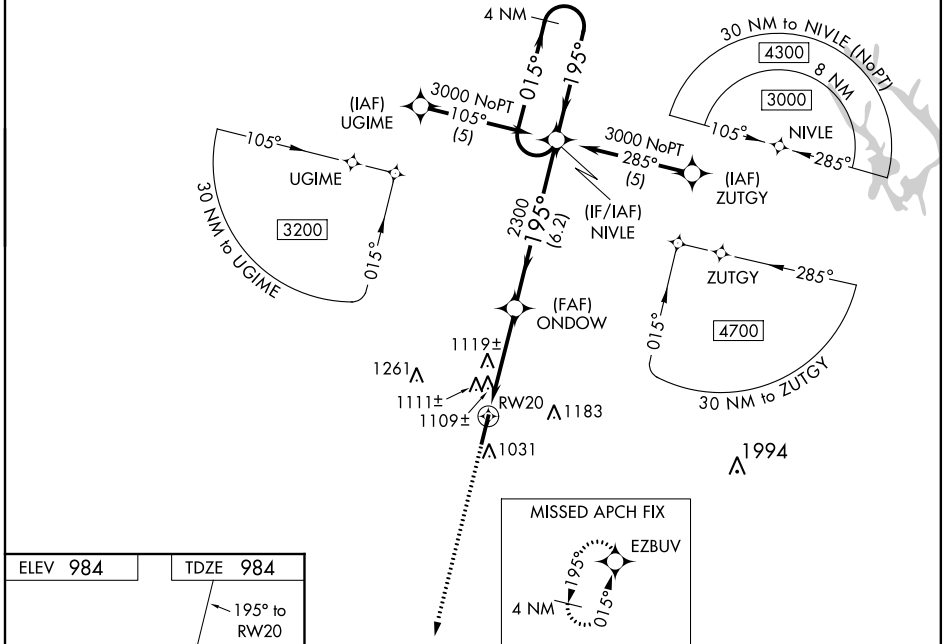
FAYETTEVILLE MUNI (FYM)

**⚠** For uncompensated Baro-VNAV systems, LNAV/VNAV NA below -16°C (4°F) or above 46°C (114°F). DME/DME RNP-0.3 NA. Visibility reduction by helicopters NA. When local altimeter setting not received use Huntsville altimeter setting and increase all DA 113 feet and all MDA 120 feet, increase LPV all Cats and LNAV Cat C and D visibility ½ mile, LNAV/VNAV all Cats and Circling Cat D visibility ¼ mile. Baro-VNAV and VDP NA when using Huntsville altimeter setting. Inoperative table does not apply to LNAV/VNAV all Cats. Inoperative table does not apply to LNAV Cat C when using Huntsville altimeter setting.

**ODALS**

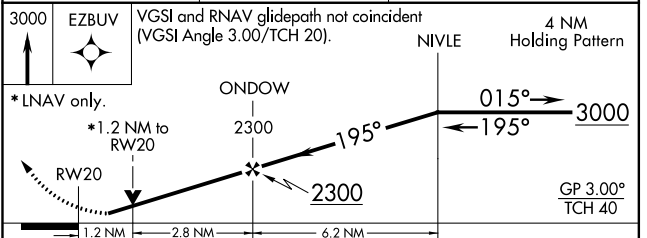
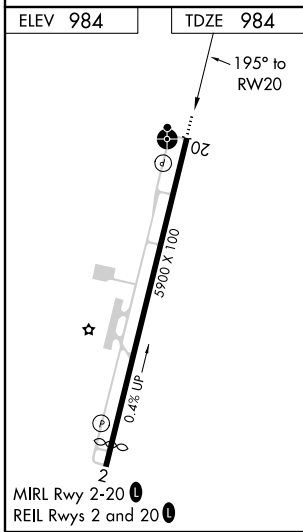
**MISSED APPROACH:**  
Climb to 3000 direct EZBUV and hold.

AWOS-3 <b>135.275</b>	HUNTSVILLE APP CON ★ <b>125.6 354.1</b>	CLNC DEL (GCO) <b>121.725</b>	UNICOM <b>122.8 (CTAF)</b>
--------------------------	--	----------------------------------	-------------------------------



SE-1, 25 FEB 2021 to 25 MAR 2021

SE-1, 25 FEB 2021 to 25 MAR 2021



CATEGORY	A	B	C	D
LPV DA	1260-1 276 (300-1)			
LNAV/VNAV DA	1448-1¾ 464 (500-1¾)			
LNAV MDA	1380-¾ 396 (400-¾)			1380-1¼ 396 (400-1¼)
CIRCLING	1420-1 436 (500-1)	1440-1 456 (500-1)	1440-1½ 456 (500-1½)	1540-2 556 (600-2)