

WAAS Ch <b>40317</b> <b>W10A</b>	APP CRS <b>097°</b>	Rwy Idg TDZE Apt Elev	<b>5000</b> <b>14</b> <b>20</b>
--	------------------------	-----------------------------	---------------------------------------

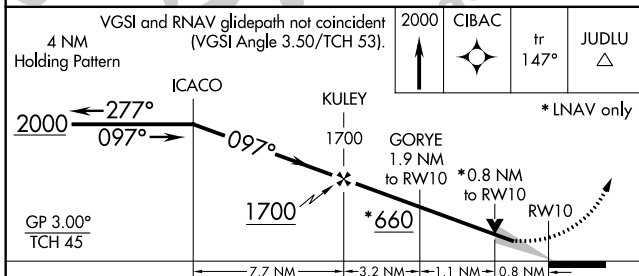
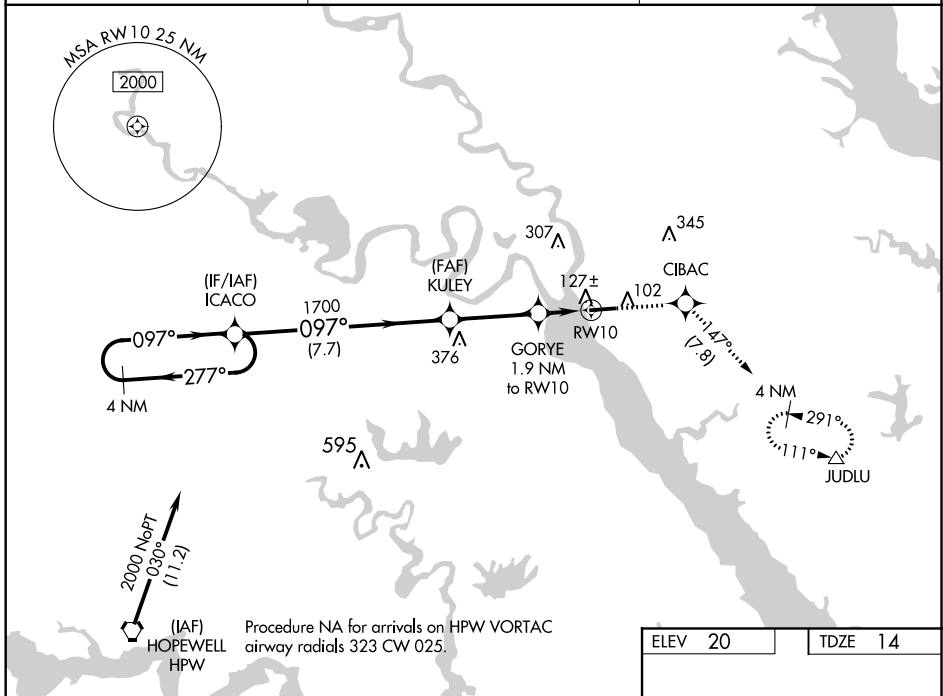
# RNAV (GPS) RWY 10

MIDDLE PENINSULA RGNL (F'YJ)

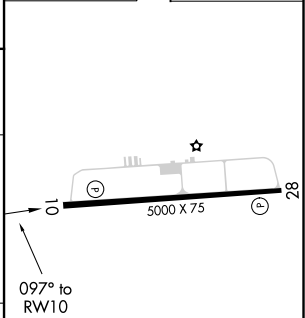
**⚠** For uncompensated Baro-VNAV systems, LNAV/VNAV NA below -1.5°C (5°F) or above 54°C (130°F). Baro-VNAV and VDP NA when using Newport News altimeter setting. DME/DME RNP-0.3 NA. When local altimeter setting not received, use Newport News altimeter setting: increase LPV DA to 329 feet; increase LNAV/VNAV DA to 420 feet and Cats A/B visibility ¼ SM; increase all MDA 80 feet.

**MISSED APPROACH:** Climb to 2000 direct CIBAC and on track 147° to JUDLU and hold.

AWOS-3 <b>132.825</b>	POTOMAC APP CON <b>126.4 282.375</b>	UNICOM <b>123.0 (CTAF) 0</b>
--------------------------	---	---------------------------------



ELEV 20	TDZE 14
---------	---------



CATEGORY	A	B	C	D
LPV DA	264-1	250 (300-1)		NA
LNAV/VNAV DA	355-1¼	341 (400-1¼)		NA
LNAV MDA	380-1	366 (400-1)		NA
<b>C</b> CIRCLING	480-1 460 (500-1)	620-1 600 (600-1)		NA

MIRL Rwy 10-28 **0**  
REIL Rwy 10 and 28 **0**

NE-3, 25 FEB 2021 to 25 MAR 2021

NE-3, 25 FEB 2021 to 25 MAR 2021