

LOC/DME I-FYJ 109.55 Chan 32 (Y)	APP CRS 094°	Rwy Ldg TDZE Apt Elev	5000 14 20
---	------------------------	-----------------------------	---------------------------------------

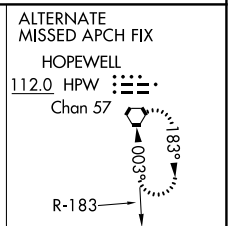
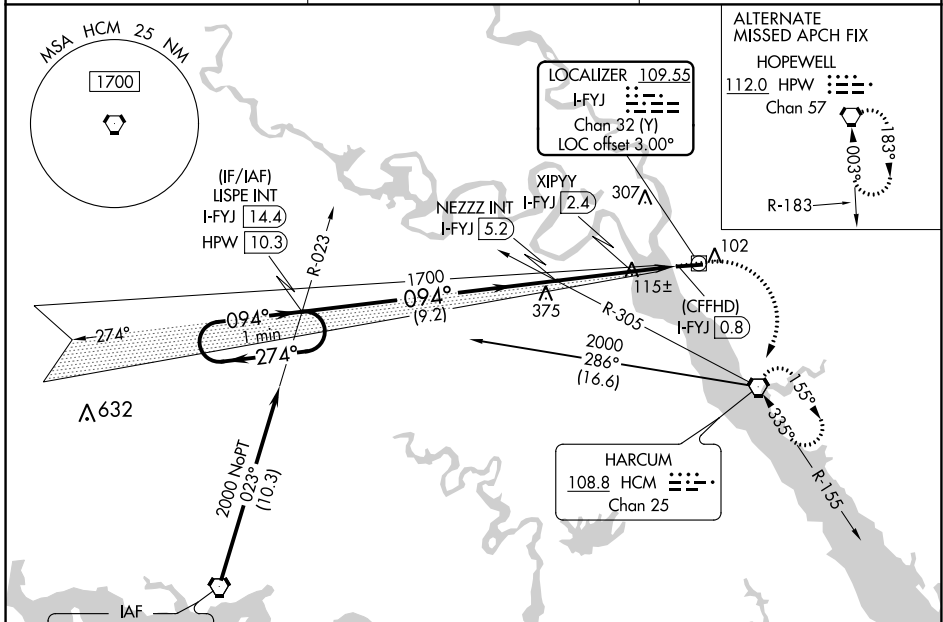
LOC RWY 10

MIDDLE PENINSULA RGNL (F'YJ)

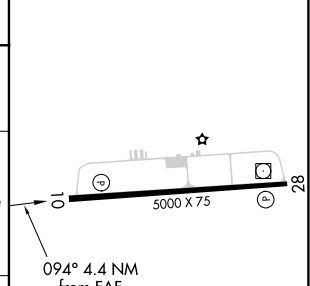
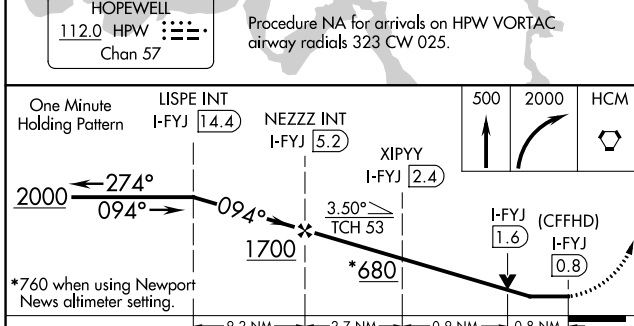
NA When local altimeter setting not received, use Newport News altimeter setting and increase all MDA 80 feet and increase S-10 Cat B and Circling Cat B visibility ¼ SM. VDP NA when using Newport News altimeter setting.

MISSED APPROACH: Climb to 500 then climbing right turn to 2000 direct HCM VORTAC and hold, continue climb-in-hold to 2000.

AWOS-3 132.825	POTOMAC APP CON 126.4 282.375	UNICOM 123.0 (CTAF) 0
--------------------------	---	--



ELEV 20	TDZE 14
---------	---------



CATEGORY	A	B	C	D
S-10	680-1	666 (700-1)		NA
C CIRCLING	680-1	660 (700-1)		NA
XIPYY FIX MINIMUMS				
S-10	380-1	366 (400-1)		NA
C CIRCLING	480-1 460 (500-1)	620-1 600 (600-1)		NA

MIRL Rwy 10-28 0	
REIL Rws 10 and 28 0	
FAF to MAP 4.4 NM	
Knots	60 90 120 150 180
Min:Sec	4:24 2:56 2:12 1:46 1:28

NE-3, 25 FEB 2021 to 25 MAR 2021

NE-3, 25 FEB 2021 to 25 MAR 2021