

WAAS CH 78016 W33A	APP CRS 332°	Rwy Idg 5796 TDZE 1203 Apt Elev 1229
--	------------------------	---

RNAV (GPS) RWY 33

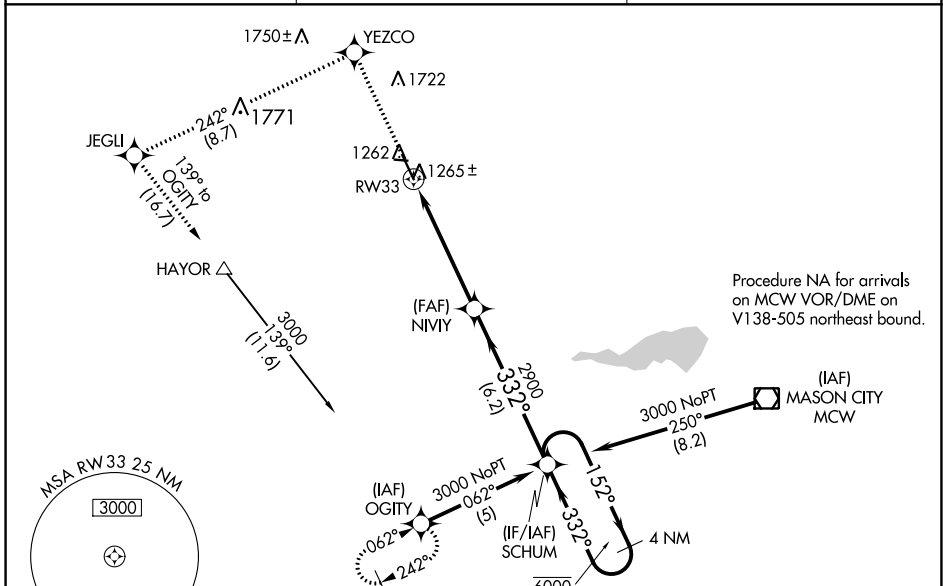
FOREST CITY MUNI (FXY)

RNP APCH.

⚠ Rwy 33 helicopter visibility reduction below 1 SM NA. Baro-VNAV NA when using Mason City altimeter setting. For uncompensated Baro-VNAV systems, LNAV/VNAV NA below -17°C or above 54°C. When local altimeter setting not received, use Mason City altimeter setting and increase all DA 34 feet and all MDA 40 feet. Straight-in Rwy 33 NA at night, Circling Rwy 9, 27 33 NA at night.

MISSED APPROACH: Climb to 3000 direct YEZCO and left turn on track 242° to JEGLI and left turn on track 139° to OGITY and hold.

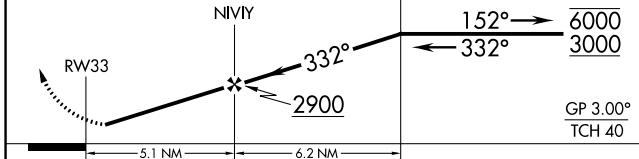
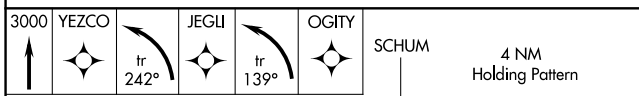
AWOS-3 123.925	MINNEAPOLIS CENTER 127.3 257.675	UNICOM 122.8 (CTAF) 0
--------------------------	--	---------------------------------



NC-3, 25 FEB 2021 to 25 MAR 2021

NC-3, 25 FEB 2021 to 25 MAR 2021

ELEV 1229	TDZE 1203
-----------	-----------



CATEGORY	A	B	C	D
LPV DA		1453-1	250 (300-1)	
LNAV/VNAV DA		1535-1¼	332 (400-1¼)	
LNAV MDA		1520-1	317 (300-1)	
CIRCLING	1680-1 451 (500-1)	1760-1 531 (600-1)	1760-1½ 531 (600-1½)	1820-2 591 (600-2)

