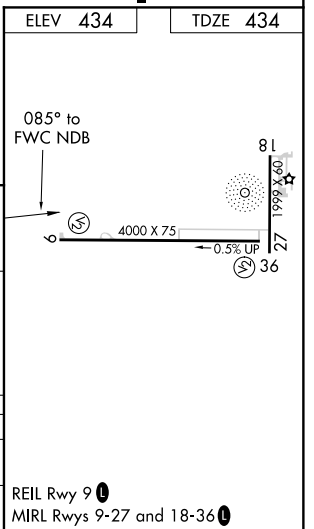
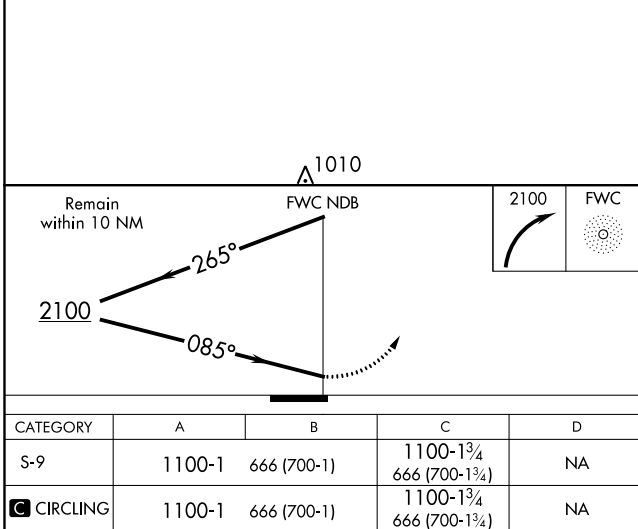
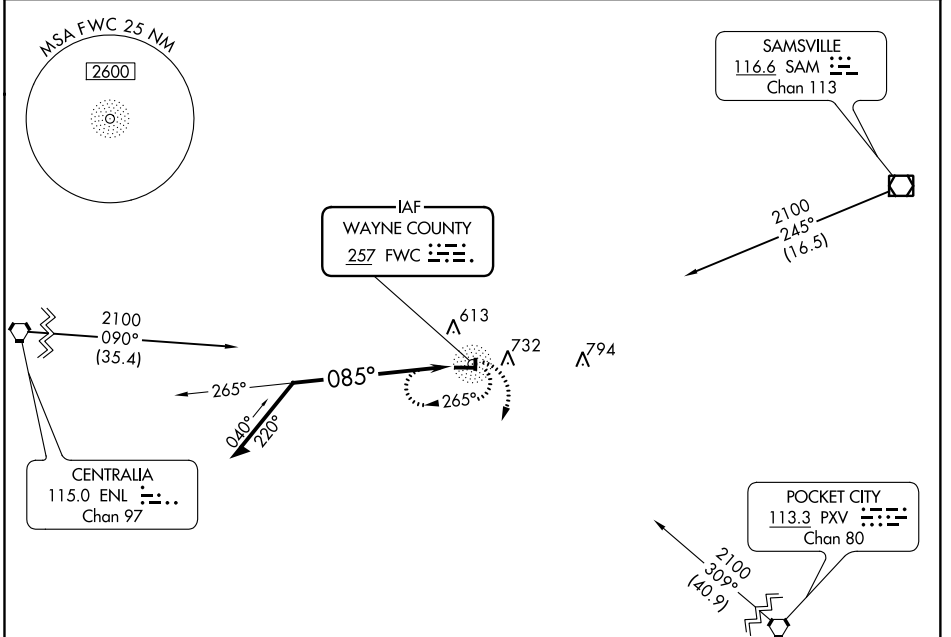


NDB FWC 257	APP CRS 085°	Rwy Idg TDZE Apt Elev	4000 434 434
-----------------------	------------------------	-----------------------------	---

NDB RWY 9
FAIRFIELD MUNI (FWC)

▼ Night landing: Rwy 9, 27, 36 NA. Helicopter visibility reduction below 1 SM NA. MISSED APPROACH: Climbing right turn to 2100 in the FWC NDB holding pattern.

AWOS-3 119.425	KANSAS CITY CENTER 127.7 351.825	UNICOM 123.05 (CTAF)
--------------------------	--	--------------------------------



CATEGORY	A	B	C	D
S-9	1100-1	666 (700-1)	1100-1¼ 666 (700-1¼)	NA
CIRCLING	1100-1	666 (700-1)	1100-1¼ 666 (700-1¼)	NA

EC-3, 25 FEB 2021 to 25 MAR 2021

EC-3, 25 FEB 2021 to 25 MAR 2021