

VOR/DME RWY 36

VOR/DME FTK 109.6 Chan 33	APCH CRS 349°	Rwy ldg TDZE Arpt Elev 5184 741 754
---	-------------------------	---

AL-151 [USA]

GODMAN AAF (KFTK)

▼ * When ALS inop increase CAT D vis to 1½ mile.
** Circling not authorized E of Rwy 18-36.

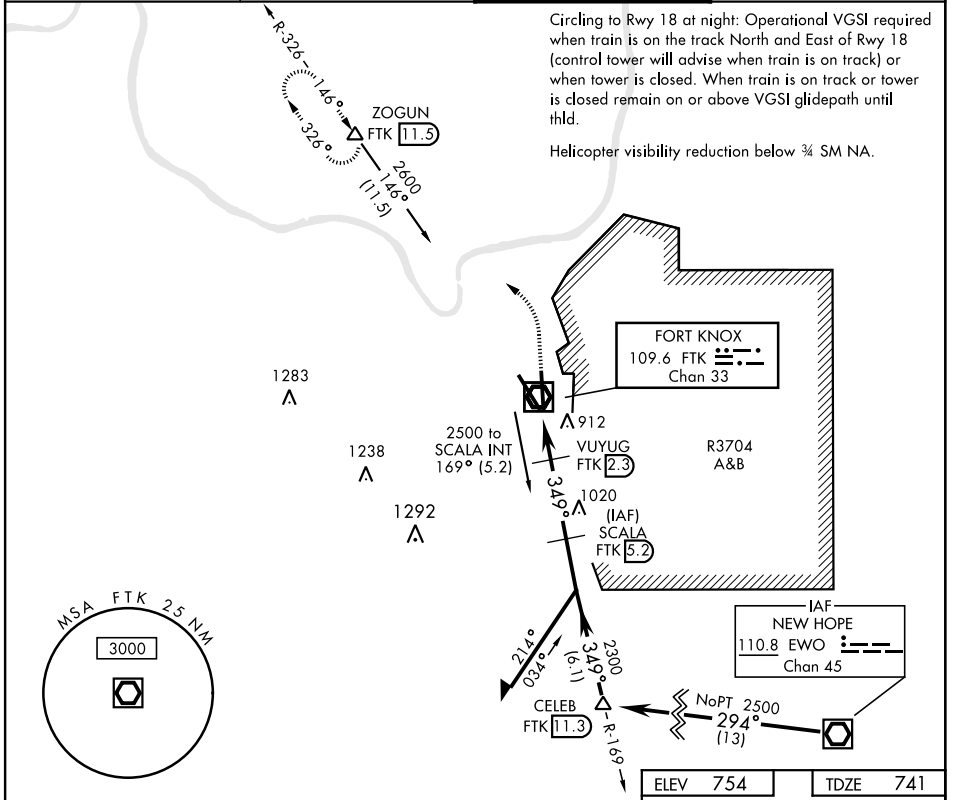
ODALS
MISSED APPROACH: Climb to 1400, then climbing left turn to 2600 on FTK VOR/DME R-326 to ZOGUN INT/FTK 11.5 DME and hold.

ATIS★
109.6

LOUISVILLE APP CON
132.075 327.0

GODMAN TOWER★
133.35 (CTAF) 0

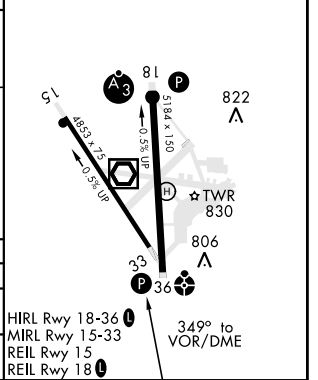
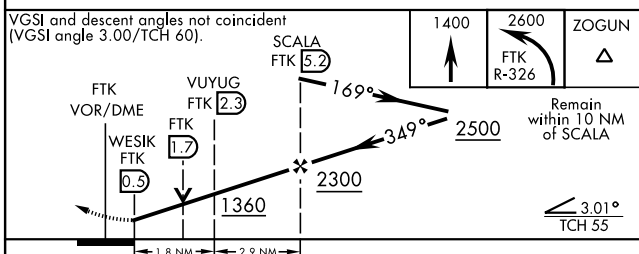
GND CON
121.9 239.3



Circling to Rwy 18 at night: Operational VGSI required when train is on the track North and East of Rwy 18 (control tower will advise when train is on track) or when tower is closed. When train is on track or tower is closed remain on or above VGSI glidepath until thld.
Helicopter visibility reduction below ¾ SM NA.

SE-1, 25 FEB 2021 to 25 MAR 2021

SE-1, 25 FEB 2021 to 25 MAR 2021



CATEGORY	A	B	C	D
S-36*	1180-¾ 439 (500-¾)		1180-1⅛ 439 (500-1⅛)	
CIRCLING**	1300-1 545 (600-1)		1300-1½ 545 (600-1½)	1320-2 565 (600-2)

HIRL Rwy 18-36
MIRL Rwy 15-33
REIL Rwy 15
REIL Rwy 18

VOR/DME RWY 36