

VOR/DME RWY 18

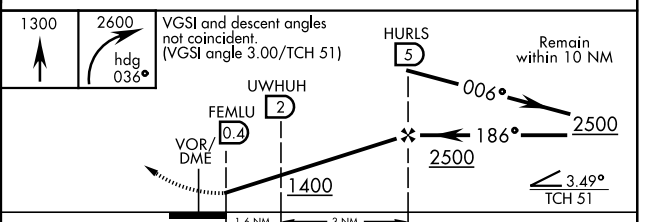
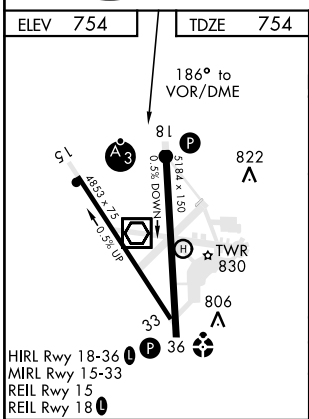
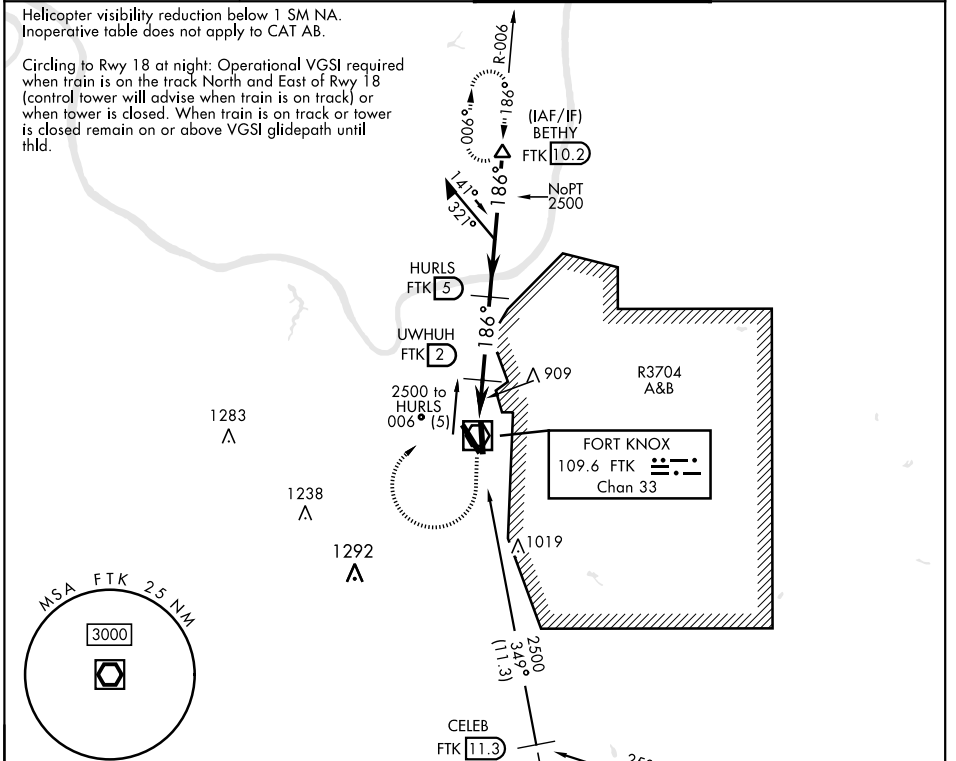
VOR/DME FTK 109.6 Chan 33	APCH CRS 186°	Rwy ldg TDZE 5184 Arprt Elev 754
---	-------------------------	--

AL-151 [USA]

GODMAN AAF (KF TK)

A3 SSALR
 * When ALS inop, increase CAT CD visibility to 1½ mile.
 ** Circling NA E of Rwy 18-36.
 MISSED APPROACH: Climb to 1300, then climbing right turn to 2600 on heading 036° and FTK VOR/DME R-006 to BETHY INT/FTK 10.2 DME and hold.

ATIS ★ 109.6	LOUISVILLE APP CON 132.075 327.0	GODMAN TOWER ★ 133.35 (CTAF) 0	GND CON 121.9 239.3
------------------------	--	---	-------------------------------



CATEGORY	A	B	C	D
S-18 *	1160-1 405 (500-1)			
C CIRCLING **	1300-1 545 (600-1)	1300-1½ 545 (600-1½)		1320-2 565 (600-2)

VOR/DME RWY 18

SE-1, 25 FEB 2021 to 25 MAR 2021

SE-1, 25 FEB 2021 to 25 MAR 2021