

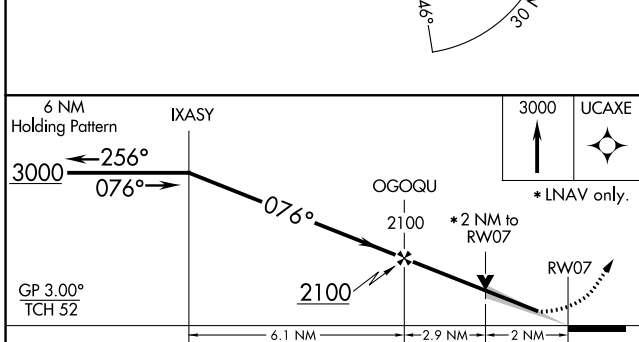
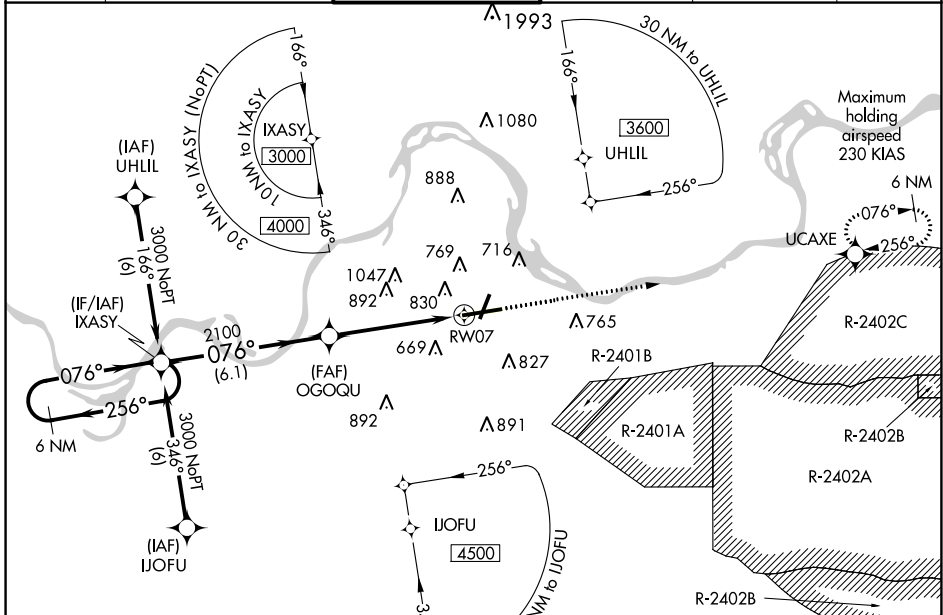
WAAS CH 77917 W07A	APP CRS 076°	Rwy Idg TDZE Apt Elev	8017 469 469
--	------------------------	-----------------------------	---

RNAV (GPS) RWY 7

FORT SMITH RGNL (F'SM)

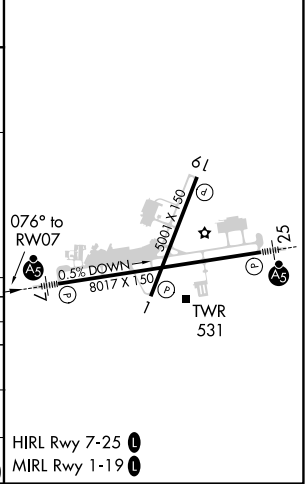
RNP APCH.		MISSED APPROACH: Climb to 3000 direct UCAXE and hold.
 For inop ALS, increase LPV Cat E visibility to 3/4, LNAV/VNAV Cat E visibility to 2 1/4 and LNAV Cat E visibility to 1 1/2. Circling NA for Cat E northwest of Rwy 7 and 19. For uncompensated Baro-VNAV systems, LNAV/VNAV NA below -15°C or above 48°C. Circling Cat E NA when R-2401B active.		

ATIS 126.3	RAZORBACK APP CON * 120.9 343.75	FORT SMITH TOWER * 118.3 (CTAF) 0 323.175	GND CON 121.9 275.8	CLNC DEL 133.85 278.3	UNICOM 122.95
----------------------	--	---	-------------------------------	---------------------------------	-------------------------



ELEV 469	D	TDZE 469
----------	----------	----------

CATEGORY	A	B	C	D	E
LPV DA		669-1/2	200 (200-1/2)		
LNAV/VNAV DA		1085-1 3/4	616 (700-1 3/4)		
LNAV MDA	1140-1/2 671 (700-1/2)	1140-1 1/2 671 (700-1 1/2)	1140-1 3/4 671 (700-1 3/4)	1140-2 671 (700-2)	1140-2 671 (700-2)
CIRCLING	1140-1 671 (700-1)	1140-2 671 (700-2)	1140-2 1/4 671 (700-2 1/4)	1200-2 1/2 731 (800-2 1/2)	



SC-1, 25 FEB 2021 to 25 MAR 2021

SC-1, 25 FEB 2021 to 25 MAR 2021