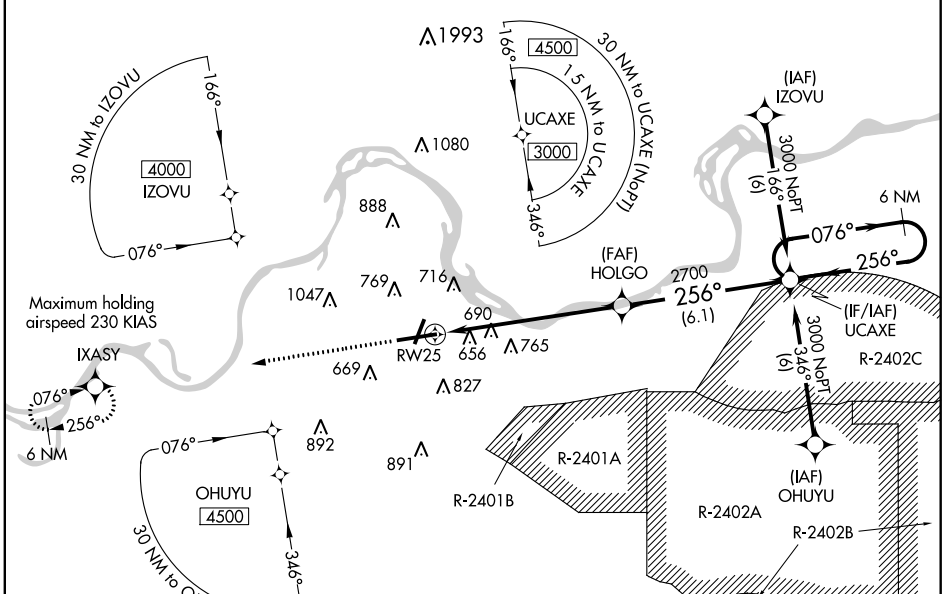


WAAS CH 87117 W25A	APP CRS 256°	Rwy Idg TDZE Apt Elev	8017 453 469
--	------------------------	-----------------------------	---

RNAV (GPS) RWY 25

FORT SMITH RGNL (FSM)

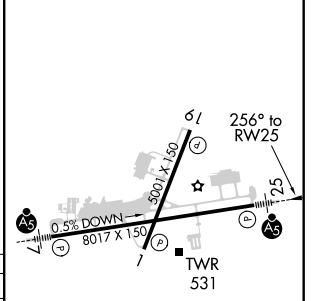
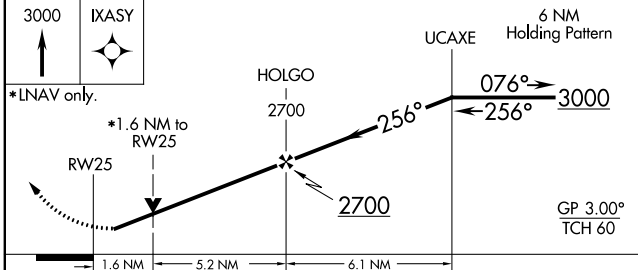
RNP APCH.		<p>Inop table does not apply to LPV all Cats. For inop ALS, increase LNAV Cat A/B visibility to RVR 5000, LNAV/VNAV and LNAV Cat E visibility to 1$\frac{1}{2}$. Circling LNA for Cat E northwest of Rwy 7 and 19. For uncompensated Baro-VNAV systems, LNAV/VNAV NA below -15°C or above 48°C. Circling Cat E NA when R-2401B active.</p> <p>ASR Rwy 25 helicopter visibility reduction below $\frac{3}{4}$ SM NA.</p>		MALSR	MISSED APPROACH: Climb to 3000 direct IXASY and hold.
ATIS 126.3	RAZORBACK APP CON * 120.9 343.75	FORT SMITH TOWER * 118.3 (CTAF) 0 323.175	GND CON 121.9 275.8	CLNC DEL 133.85 278.3	UNICOM 122.95



SC-1, 25 FEB 2021 to 25 MAR 2021

SC-1, 25 FEB 2021 to 25 MAR 2021

ELEV 469	TDZE 453
----------	----------



CATEGORY	A	B	C	D	E
LPV DA	653/40 200 (200- $\frac{3}{4}$)				
LNAV/VNAV DA	979/60 526 (600-1 $\frac{1}{4}$)				
LNAV MDA	980/40	527 (600- $\frac{3}{4}$)	980/50 527 (600-1)	980/60	527 (600-1 $\frac{1}{4}$)
CIRCLING	1140-1	671 (700-1)	1140-2 671 (700-2)	1140-2 $\frac{1}{4}$	1200-2 $\frac{1}{2}$ 731 (800-2 $\frac{1}{2}$)

HIRL Rwy 7-25
MIRL Rwy 1-19