


LOC I-GKV 111.3	APP CRS 076°	Rwy Idg TDZE Apt Elev	8017 469 469
---------------------------	------------------------	-----------------------------	---

ILS or LOC RWY 7

FORT SMITH RGNL (FSM)

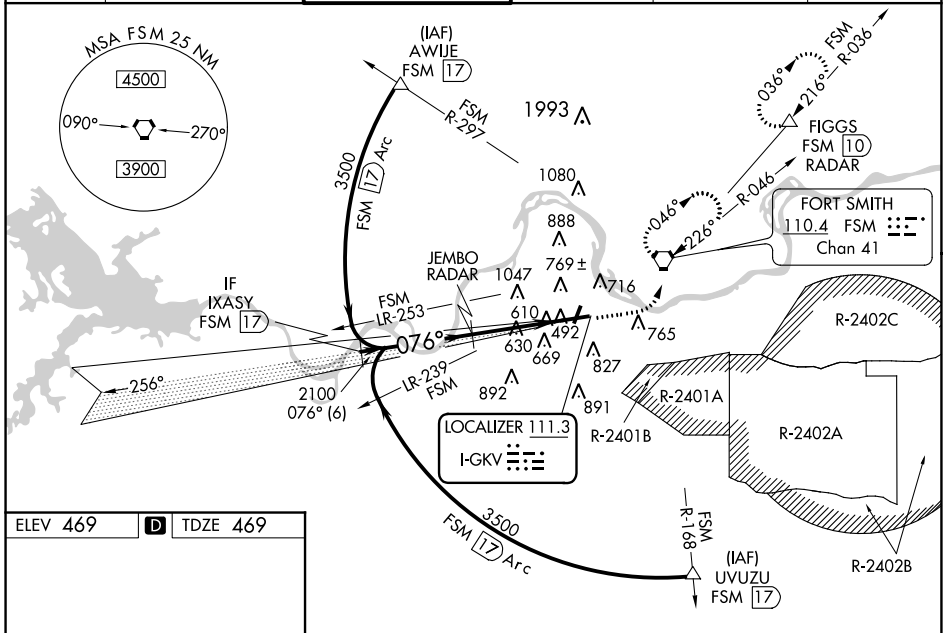
DME or RADAR required.

ASR DME from FSM VORTAC. Simultaneous reception of I-GKV and FSM VORTAC DME required. Rwy 7 helicopter visibility reduction below 3/4 SM NA. Circling NA for Cat E when R-2401B active. Circling NA for Cat E NW of Rws 7 and 19. For inop ALS, increase S-LOC 7 Cat A/B visibility to 1 SM, and Cat C/D/E to 1 1/2 SM. Inop table does not apply to S-ILS 7.

MALSR 

MISSED APPROACH: Climb to 1000 then climbing left turn to 3000 direct FSM VORTAC and hold, continue climb-in-hold to 3000. (TACAN aircraft continue climb to 4000 on FSM VORTAC R-036 to FIGGS/FSM 10 DME/RADAR and hold, continue climb-in-hold to 4000.)

ATIS 126.3	RAZORBACK APP CON * 120.9 343.75	FORT SMITH TOWER * 118.3 (CTAF) 323.175	GND CON 121.9 275.8	CLNC DEL 133.85 278.3	UNICOM 122.95
----------------------	--	---	-------------------------------	---------------------------------	-------------------------



ELEV 469 **D** TDZE 469

076° 5 NM from FAF

0.5% DOWN

8017 X 150

801 X 150

TWR 531

HIRL Rwy 7-25

MIRL Rwy 1-19

IXASY FSM 17	JEMBO RADAR	1000	3000	FSM	
3500	2100	↑	↶	◻	
GS 3.00°	2100	*LOC only.			
TCH 52	2100				
	6 NM	3.9 NM	1.1 NM		
CATEGORY	A	B	C	D	E
S-ILS 7		719-3/4	250 (300-3/4)		
S-LOC 7		880-3/4	411 (500-3/4)		
C CIRCLING	1140-1	671 (700-1)	1400-2 3/4 931 (1000-2 3/4)	1400-3	931 (1000-3)

SC-1, 25 FEB 2021 to 25 MAR 2021

SC-1, 25 FEB 2021 to 25 MAR 2021