

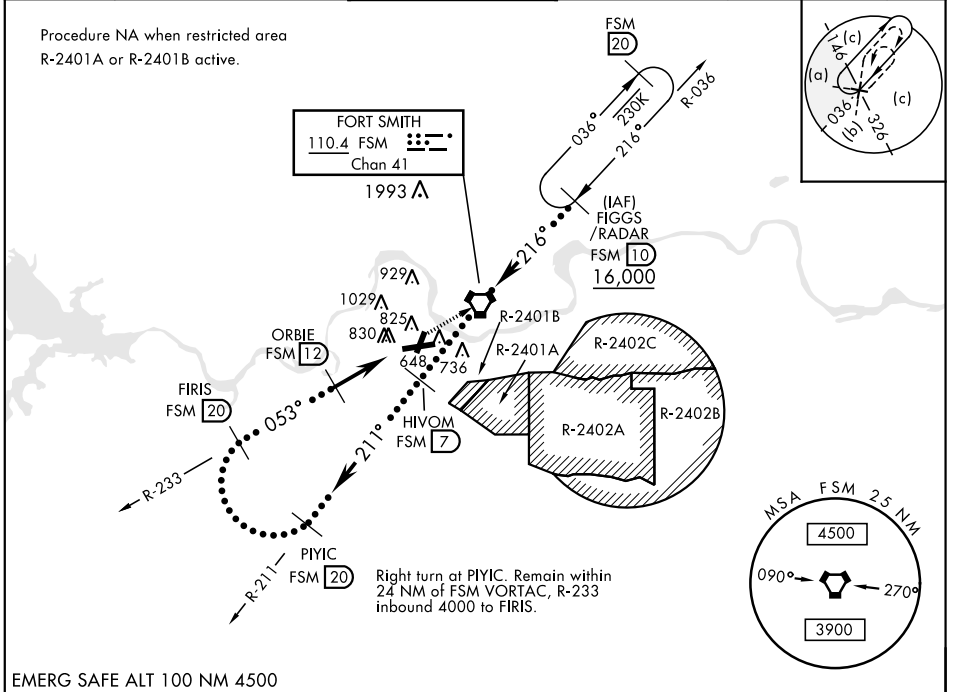
VORTAC FSM 110.4 Chan 41	APCH CRS 053°	Rwy Idg TDZE Arprt Elev 8017 469 469	JAL-631 [USAF]	FORT SMITH REGIONAL (KFMS)
--	-------------------------	--	----------------	----------------------------

M * Circling NA NW Rwy 7 and 19 for CAT E.
Circling to Rwy 1 NA at night.

MALSR **A5**

MISSED APPROACH: Climb to 4000 direct FSM VORTAC and on R-036 to FIGGS (FSM R-036/10 DME) and hold.

ATIS ★ 126.3	RAZORBACK APP CON 120.9 343.75	FORT SMITH TOWER ★ 118.3 (CTAF) 323.175	GND CON 121.9 275.8	CLNC DEL 133.85 278.3	ASR
------------------------	--	---	-------------------------------	---------------------------------	-----



EMERG SAFE ALT 100 NM 4500

4000	FSM	FSM R-036	ELEV 469	TDZE 469
------	-----	-----------	----------	----------

HIVOM 7
VORTAC 16,000
PIYIC R-211 20
FIRIS R-233 20
ORBIE 12
WULAR 8.2 6.3
4000 10,000 2400 16,000 16,000
053° 211°
3.11° TCH 51
5.7 NM

618 Δ
500 Δ
741 Δ
696 Δ
501 Δ
583 Δ
8017 x 150
0.3° DOWN
TWR 531
A5

053° 5.7 NM from 12 DME

CATEGORY	C	D	E
S-7	1120-1 $\frac{1}{8}$	651 (700-1 $\frac{1}{8}$)	
CIRCLING *	1140-2 671 (700-2)	1140-2 $\frac{1}{4}$ 671 (700-2 $\frac{1}{4}$)	1260-2 $\frac{3}{4}$ 791 (800-2 $\frac{3}{4}$)

MIRL Rwy 1-19 \downarrow
HIRL Rwy 7-25 \downarrow

SC-1, 25 FEB 2021 to 25 MAR 2021

SC-1, 25 FEB 2021 to 25 MAR 2021