

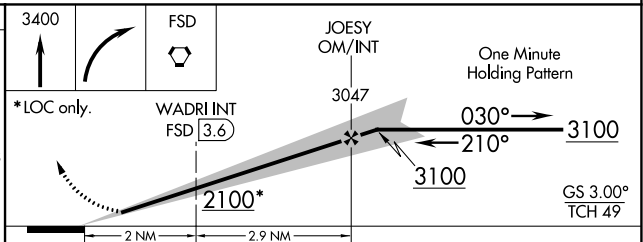
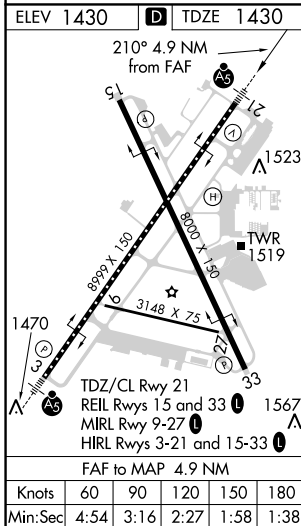
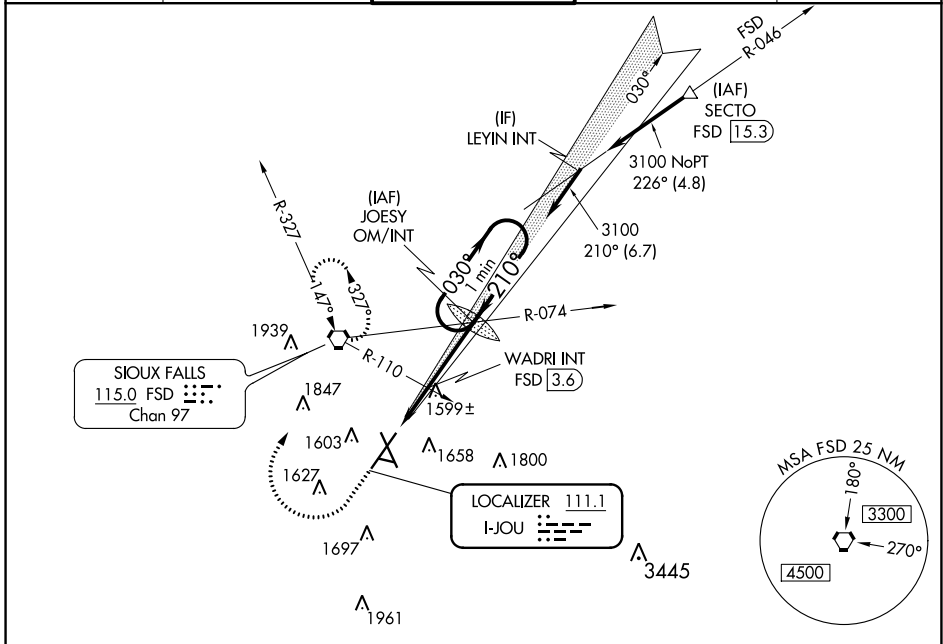
LOC I-JOU <b>111.1</b>	APP CRS <b>210°</b>	Rwy Idg <b>8999</b> TDZE <b>1430</b> Apt Elev <b>1430</b>
---------------------------	------------------------	---

# ILS or LOC RWY 21

JOE FOSS FIELD (FSD)

MALSRL ASR -31°C	For inoperative MALSRL increase S-ILS all Cats visibility to 3/4 mile, increase S-LOC 21 Cat C/D visibility to 1 1/8 mile. When using WADRI FIX minimums, increase S-LOC 21 Cat C/D visibility to 1 mile.	MALSRL ASR	MISSED APPROACH: Climb to 3400 then right turn direct FSD VORTAC and hold.
------------------------	---	---------------	--

ATIS <b>126.6</b>	SIoux FALLS APP CON * <b>125.8 284.725</b>	SIoux FALLS TOWER * <b>118.3 (CTAF) 0 257.8</b>	GND CON <b>121.9 348.6</b>	UNICOM <b>122.95</b>
----------------------	---	--	-------------------------------	-------------------------



CATEGORY	A	B	C	D
S-ILS 21	1630/18 200 (200-1/2)			
S-LOC 21	2100/24	670 (700-1/2)	2100-1 1/2	670 (700-1 1/2)
<b>C</b> CIRCLING	2100-1	670 (700-1)	2100-1 3/4	2200-2 1/2
WADRI FIX MINIMUMS				
S-LOC 21	1800/24	370 (400-1/2)	1800/35	370 (400-3/8)
<b>C</b> CIRCLING	1960-1	1980-1	2060-1 3/4	2200-2 1/2
	530 (600-1)	550 (600-1)	630 (700-1 3/4)	770 (800-2 1/2)

NC-1, 25 FEB 2021 to 25 MAR 2021

NC-1, 25 FEB 2021 to 25 MAR 2021