

SIoux FALLS, SOUTH DAKOTA

# HI-ILS or LOC RWY 3

|                           |                         |  |
|---------------------------|-------------------------|--|
| LOC I-FSD<br><b>109.9</b> | APCH CRS<br><b>030°</b> | Rwy ldg<br><b>8999</b><br>TDZE<br><b>1424</b><br>Arprt Elev<br><b>1430</b> |
|---------------------------|-------------------------|--|

JAL-396 [USAF]

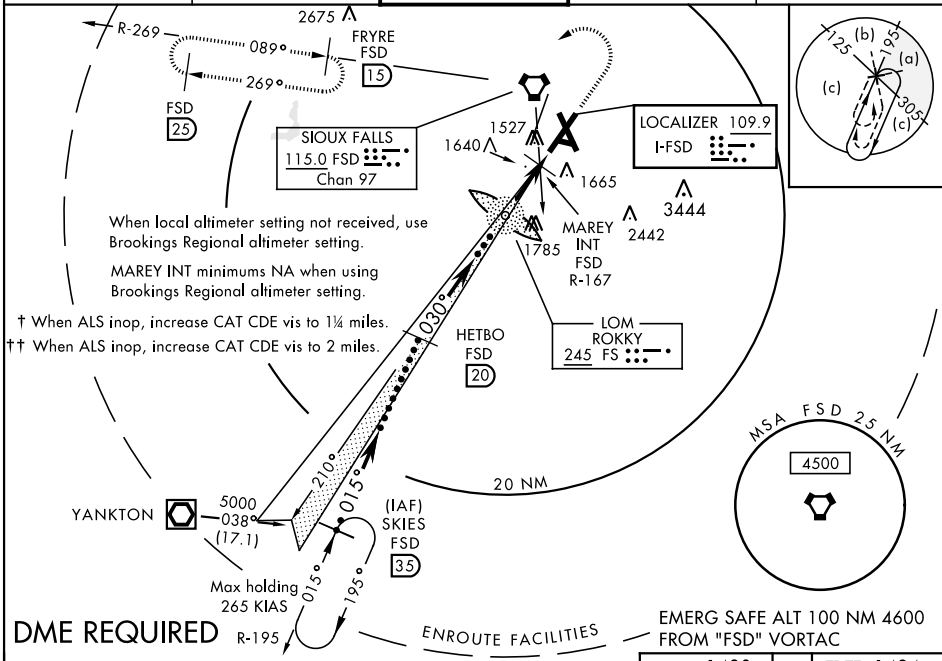
SIoux FALLS/JOE FOSS FIELD (KFSD)

- \* When ALS inop, increase CAT E vis to 3/4 mile.
- \*\* When ALS inop, increase CAT E vis to 1 1/4 mile.
- \*\*\* When ALS inop, increase CAT E vis to 1 1/2 mile.

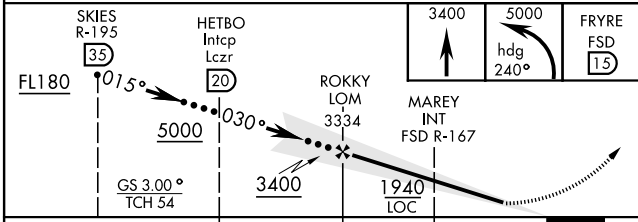


MISSED APPROACH: Climb to 3400, then climbing left turn to 5000 via heading 240° and via FSD VORTAC R-269 to FRYRE (FSD 1.5 DME) and hold.

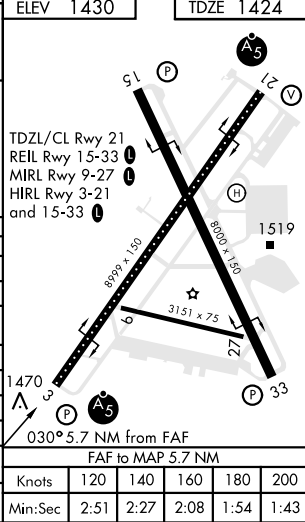
|                      |   |   |                               |     |
|----------------------|---|---|-------------------------------|-----|
| ATIS<br><b>126.6</b> | SIoux FALLS APP CON<br><b>125.8 126.9 353.6</b> | SIoux FALLS TOWER *<br><b>118.3 0 257.8</b> | GND CON<br><b>121.9 348.6</b> | ASR |
|----------------------|---|---|-------------------------------|-----|



**DME REQUIRED**



| CATEGORY                             | C                     | D                       | E               |
|--------------------------------------|-----------------------|-------------------------|-----------------|
| S-ILS 3*                             | 1674/24               | 250                     | (300-1/2)       |
| S-LOC 3**                            | 1940/50 516 (600-1)   | 1940/60 516 (600-1 1/2) |                 |
| CIRCLING                             | 1980-1 1/2            | 2040-2                  | 2300-3          |
|                                      | 550 (600-1 1/2)       | 610 (700-2)             | 870 (900-3)     |
| MAREY FIX MINIMA                     |                       |                         |                 |
| S-LOC 3***                           | 1780/24 356 (400-1/2) | 1780/40 356 (400-3/4)   |                 |
| BROOKINGS REGIONAL ALTIMETER SETTING |                       |                         |                 |
| S-ILS 3 †                            | 1805/40               | 381                     | (400-3/4)       |
| S-LOC 3 ††                           | 2080/60               | 2080-1 1/2              | 2080-1 3/4      |
|                                      | 656 (700-1 1/2)       | 656 (700-1 1/2)         | 656 (700-1 3/4) |
| CIRCLING                             | 2120-2                | 2280-2 3/4              | 2440-3          |
|                                      | 690 (700-2)           | 850 (900-2 3/4)         | 1010 (1100-3)   |



SIoux FALLS, SOUTH DAKOTA

43° 35' N - 96° 44' W

SIoux FALLS/JOE FOSS FIELD (KFSD)

Amdt 9A 17OCT13

# HI-ILS or LOC RWY 3

NC-1, 25 FEB 2021 to 25 MAR 2021

NC-1, 25 FEB 2021 to 25 MAR 2021