

WAAS CH 81924 W19A	APP CRS 193°	Rwy Idg TDZE Apt Elev	4727 81 81
--	------------------------	-----------------------------	---------------------------------------

RNAV (GPS) RWY 19

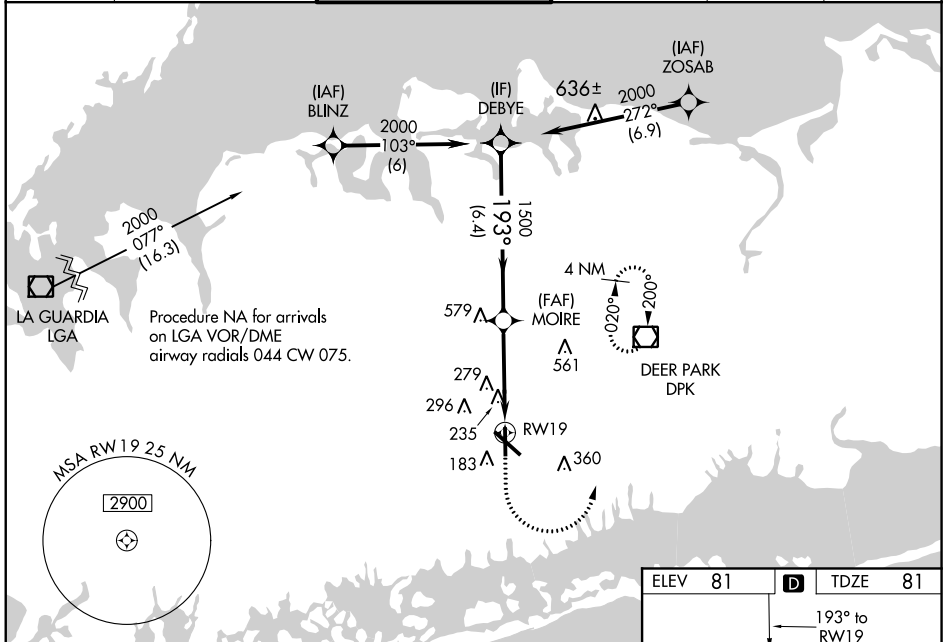
REPUBLIC (F'RG)

RADAR required for procedure entry at ZOSAB.

⚠ Baro-VNAV NA when using Islip altimeter setting. For uncompensated Baro-VNAV systems, LNAV/VNAV NA below -15°C or above 54°C. Rwy 19 helicopter visibility reduction below 1 SM NA. When local altimeter setting not received, use Islip altimeter setting and increase all DA 37 feet and all MDA 40 feet; increase LNAV/VNAV all Cats visibility 1/8 SM and Circling Cats C/D visibility 1/4 SM.

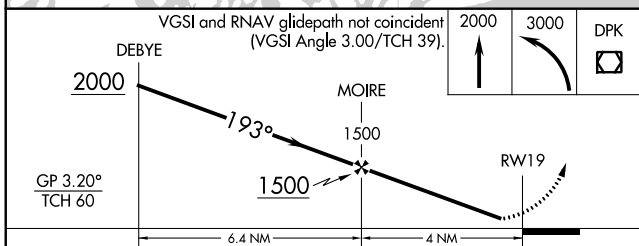
MISSED APPROACH:
Climb to 2000 then climbing left turn to 3000 direct DPK VOR/DME and hold.

ATIS 126.65	NEW YORK APP CON 128.125 269.0	REPUBLIC TOWER ★ 118.8 (CTAF) 279.65	GND CON 121.6 269.6	CLNC DEL 128.25	UNICOM 122.95
-----------------------	--	--	-------------------------------	---------------------------	-------------------------



NE-2, 25 FEB 2021 to 25 MAR 2021

NE-2, 25 FEB 2021 to 25 MAR 2021



CATEGORY	A	B	C	D
LPV DA	348-1	267 (300-1)		NA
LNAV/VNAV DA	560-1½	479 (500-1½)		NA
LNAV MDA	540-1	459 (500-1)	540-1¾	459 (500-1¾)
CIRCLING	560-1 479 (500-1)	600-1 519 (600-1)	720-1¾ 639 (700-1¾)	720-2 639 (700-2)

