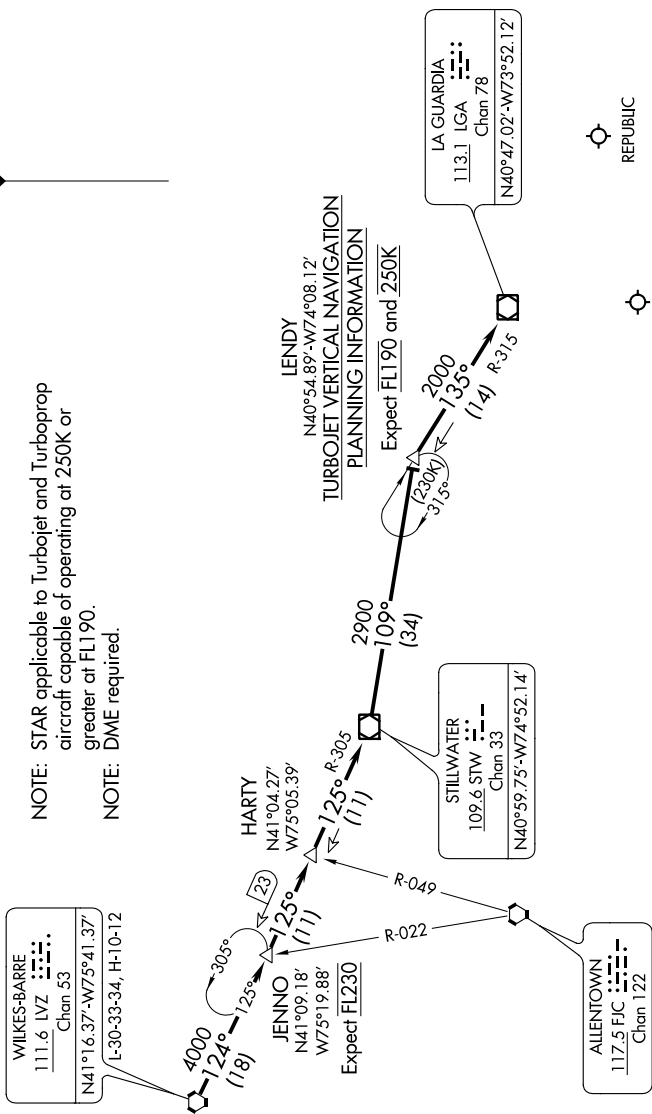


LENDY SIX ARRIVAL

NEW YORK, NEW YORK

NE-2, 25 FEB 2021 to 25 MAR 2021

NEW YORK APP CON
 128.125 269.0
 FRG ATIS
 126.65
 JFK D-ATIS
 128.725 (ARR/DEP)
 117.7 (ARR-NE)
 115.4 (ARR-SW)



NOTE: STAR applicable to Turbojet and Turboprop aircraft capable of operating at 250K or greater at FL190.
 NOTE: DME required.

LENDY
 N40°54.89'-W74°08.12'
 TURBOJET VERTICAL NAVIGATION
 PLANNING INFORMATION
 Expect FL190 and 250K



LA GUARDIA
 113.1 LGA
 Chan 78
 N40°47.02'-W73°52.12'



JOHN F KENNEDY INTL



REPUBLIC

ARRIVAL ROUTE DESCRIPTION

From over LVZ VORTAC on LVZ R-124 to JENNO, then STW R-305 to HARTY INT, then STW R-305 to STW VOR/DME, then from STW VOR/DME on STW R-109 to LENDY, then on LGA R-315 to LGA VOR/DME. Expect radar vectors to final approach course after LGA VOR/DME.

NOTE: Chart not to scale.

LENDY SIX ARRIVAL

NEW YORK, NEW YORK

NE-2, 25 FEB 2021 to 25 MAR 2021