

TACAN FOE Chan <b>53</b> <b>(111.6)</b>	APP CRS <b>138°</b>	Rwy Idg <b>12803</b> TDZE <b>1066</b> Apt Elev <b>1078</b>
---	------------------------	--

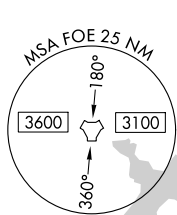
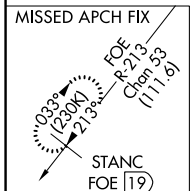
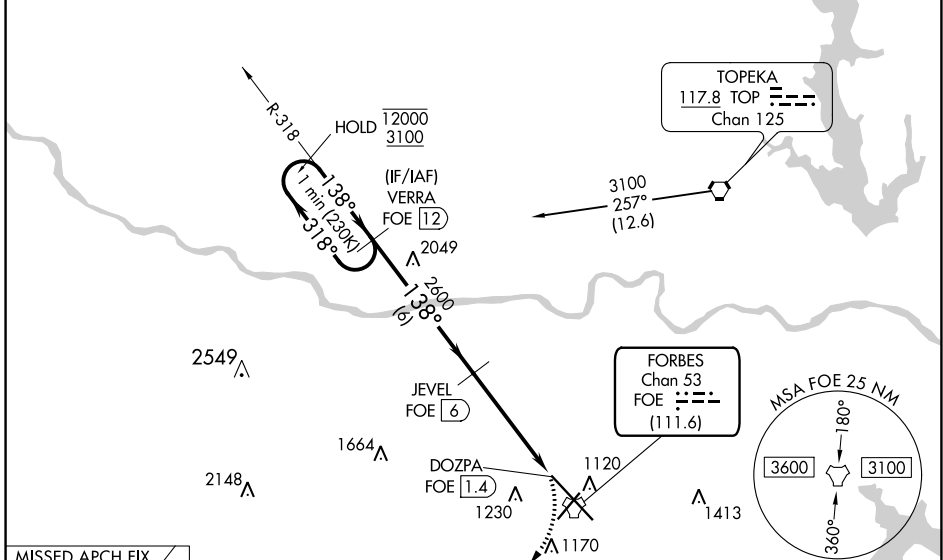
# TACAN RWY 13

TOPEKA RGNL (F'OE)

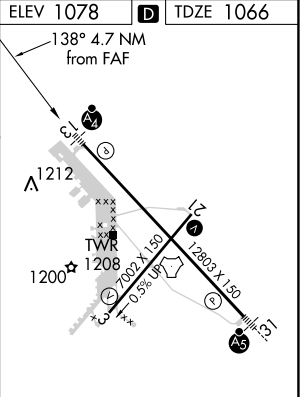
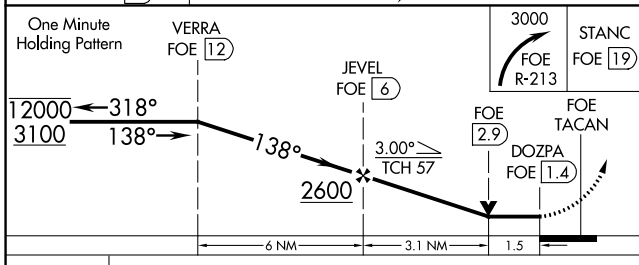
NA	MALSF 	MISSED APPROACH: Climbing right turn to 3000 on FOE TACAN R-213 to STANC/FOE 19 DME and hold.
----	-----------	---

ATIS <b>128.25</b>	KANSAS CITY CENTER <b>123.8 343.7</b>	FORBES TOWER* <b>120.8 (CTAF) 340.2</b>	GND CON <b>118,425 275.8</b>	UNICOM <b>122.95</b>
-----------------------	--	--	---------------------------------	-------------------------

**NOT FOR CIVIL USE**



Emergency Safe Altitude 100 NM 3600



CATEGORY	A	B	C	D	E
S-13	1600-1	534 (600-1)	1600-1½	534 (600-1½)	
CIRCLING	1600-1	522 (600-1)	1600-1½	1700-2	1720-2¼
			522 (600-1½)	622 (700-2)	642 (700-2¼)

REIL Rws 3, 13 and 21  
MIRL Rwy 3-21  
HIRL Rwy 13-31

NC-2, 25 FEB 2021 to 25 MAR 2021

NC-2, 25 FEB 2021 to 25 MAR 2021