

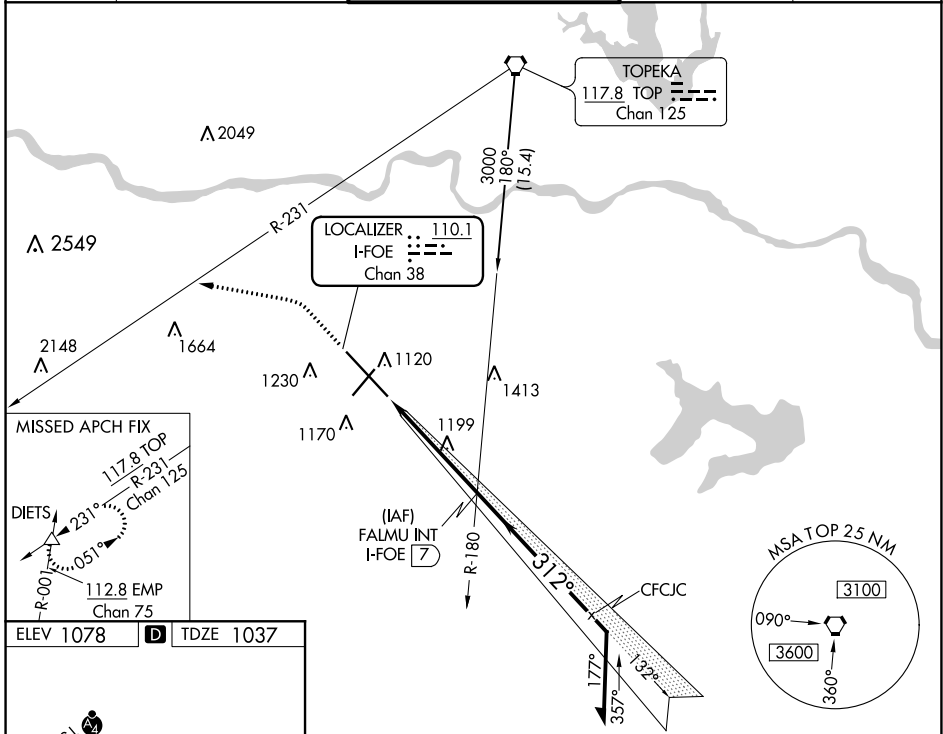
LOC/DME I-FOE 110.1 Chan 38	APP CRS 312°	Rwy Idg 12803 TDZE 1037 Apt Elev 1078
---	------------------------	--

ILS or LOC RWY 31

TOPEKA RGNL (FOE)

RADAR required for Cat E for Procedure Entry. For inop ALS, increase S-ILS Cat E visibility to RVR 4000 and S-LOC Cat E visibility to 1 1/4 SM. # RVR 1800 authorized with use of FD or AP or HUD to DA.		MALSR 	MISSED APPROACH: Climb to 1900 then climbing left turn to 3700 on heading 275° and on TOP VORTAC R-231 to DIETS INT and hold.
---	--	-----------	---

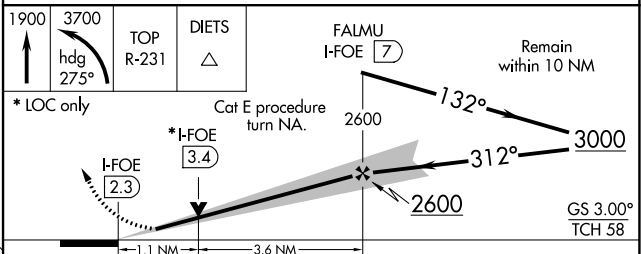
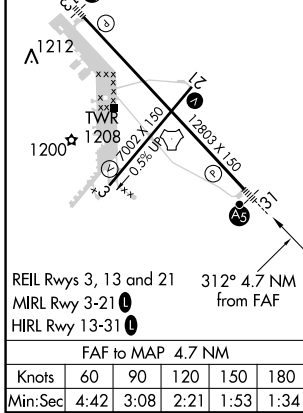
ATIS 128.25	KANSAS CITY CENTER 123.8 343.7	FORBES TOWER* 120.8 (CTAF) 0 340.2	GND CON 118.425 275.8	UNICOM 122.95
-----------------------	--	--	---------------------------------	-------------------------



NC-2, 25 FEB 2021 to 25 MAR 2021

NC-2, 25 FEB 2021 to 25 MAR 2021

ELEV 1078	D	TDZE 1037
-----------	---	-----------



CATEGORY	A	B	C	D	E
S-ILS 31 #	1237/24 200 (200-1/2)				
S-LOC 31	1460/24	423 (400-1/2)	1460/40	423 (400-3/4)	
CIRCLING	1520-1 442 (500-1)	1580-1 502 (600-1)	1580-1 1/2 502 (600-1 1/2)	1700-2 622 (700-2)	1720-2 1/4 642 (700-2 1/4)