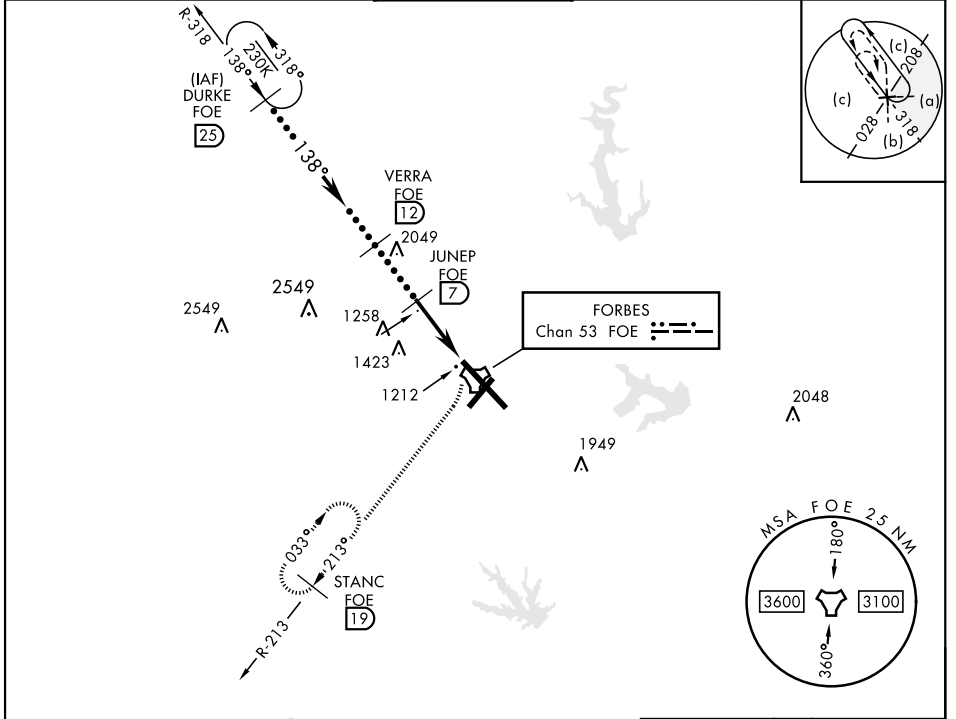


# HI-TACAN RWY 13

TACAN Chan <b>53</b>	FOE	APCH CRS <b>138°</b>	Rwy ldg <b>12,803</b> TDZE <b>1066</b> Arprt Elev <b>1078</b>	JAL-424 [USAF]	TOPEKA RGNL (KFOE)
----------------------	-----	----------------------	---	----------------	--------------------

▽ NA  
▲ MISSED APPROACH: Climbing right turn to 3000 via FOE TACAN R-213 to STANC/19 DME and hold.

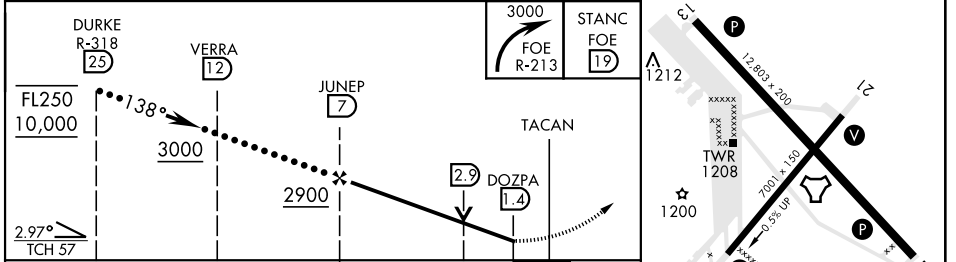
ATIS <b>128.25</b>	KANSAS CITY CENTER <b>123.8 343.7</b>	FORBES TOWER ★ <b>120.8 (CTAF) 340.2</b>	GND CON <b>118.425 275.8</b>	UNICOM <b>122.95</b>
--------------------	---------------------------------------	--	------------------------------	----------------------



EMERG SAFE ALT 100 NM 3600

ELEV 1078	TDZE 1066
-----------	-----------

138° to TACAN



CATEGORY	C	D	E
S-13	1600-1½	534 (600-1½)	
<span style="border: 1px solid black; border-radius: 50%; padding: 2px;">C</span> CIRCLING	1600-1½ 522 (600-1½)	1700-2 622 (700-2)	1720-2¼ 642 (700-2¼)

MRL Rwy 3-21 (L)  
 REL Rwy 3, 13, and 21  
 HIRL Rwy 13-31 (L)

# HI-TACAN RWY 13

NC-2, 25 FEB 2021 to 25 MAR 2021

NC-2, 25 FEB 2021 to 25 MAR 2021