

WAAS CH <b>82428</b> <b>W03A</b>	APP CRS <b>031°</b>	Rwy Idg TDZE <b>473</b> Apt Elev <b>473</b>
--	------------------------	---

# RNAV (GPS) RWY 3

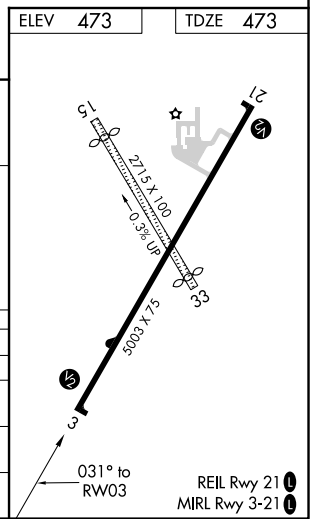
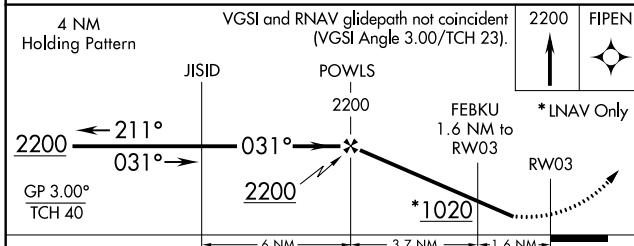
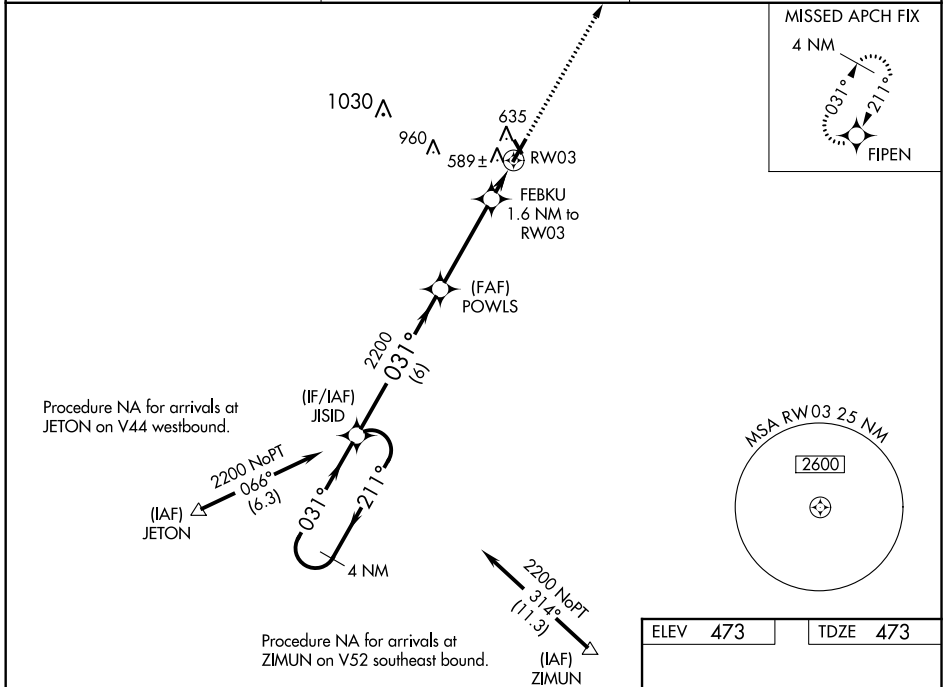
FLORA MUNI (F.O.A.)

RNP APCH.

Baro-VNAV NA when using Olney-Noble altimeter setting. For uncompensated Baro-VNAV systems, LNAV/VNAV NA below -17°C or above 54°C. When local altimeter setting not received, use Olney-Noble altimeter setting and increase all DA 33 feet and all MDA 40 feet; increase LPV visibility all Cats, and LNAV Cat C visibility 1/8 mile. Circling Cat C visibility 1/2 mile. Rwy 3 helicopter visibility reduction below 3/4 SM NA. Circling NA to Rwys 15 and 33.

MISSED APPROACH: Climb to 2200 direct FIPEN and hold.

AWOS-3 <b>120.175</b>	KANSAS CITY CENTER <b>127.7 351.825</b>	UNICOM <b>122.7 (CTAF) 0</b>
--------------------------	--	---------------------------------



CATEGORY	A	B	C	D
LPV DA	783-1	310 (400-1)		NA
LNAV/VNAV DA	859-1 3/8	386 (400-1 3/8)		NA
LNAV MDA	860-1	387 (400-1)	860-1 1/8 387 (400-1 1/8)	NA
CIRCLING	940-1	467 (500-1)	1120-1 3/4 647 (700-1 3/4)	NA

EC-3, 25 FEB 2021 to 25 MAR 2021

EC-3, 25 FEB 2021 to 25 MAR 2021