

VORTAC RSW 111.8 Chan 55	APP CRS 129°	Rwy Idg 4297 TDZE 15 Apt Elev 17
---------------------------------------	------------------------	---

VOR RWY 13

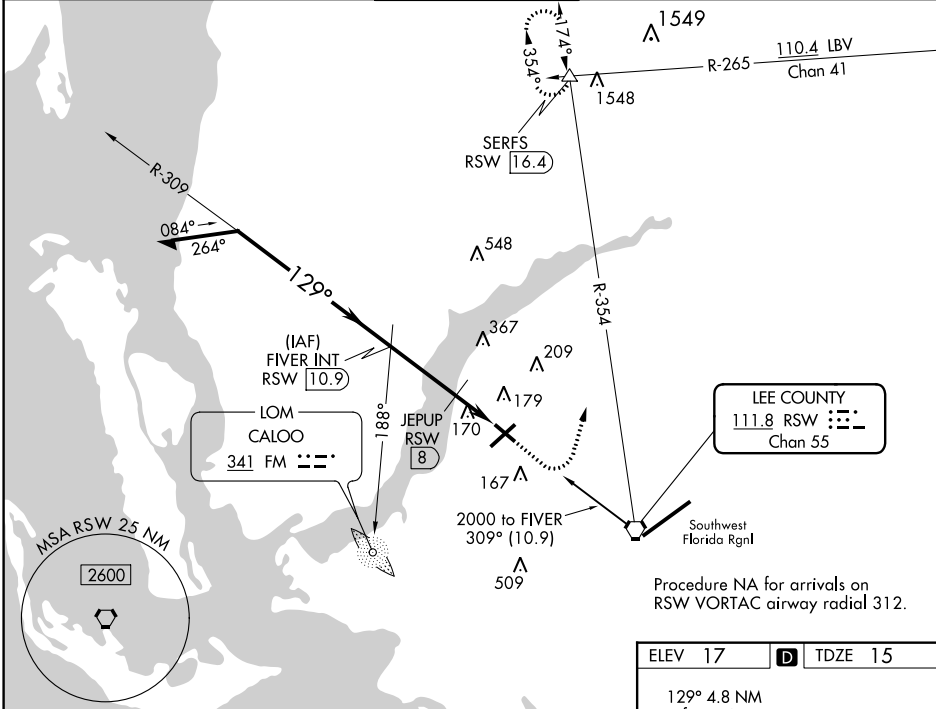
PAGE FIELD (FMY)

ADF or DME required.

When Circling to Rwy 31 at night, operational VGSI required, remain on or above VGSI glidepath until threshold.

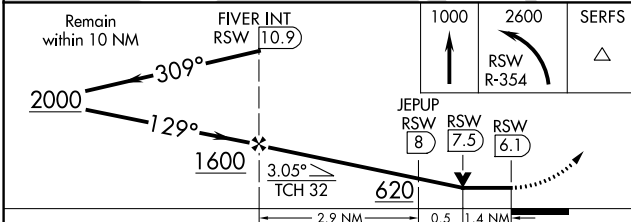
MISSED APPROACH: Climb to 1000 then climbing left turn to 2600 on RSW VORTAC R-354 to SERFS INT/RSW 16.4 DME and hold.

ATIS 123.725	FORT MYERS APP CON* 126.8 306.2	PAGE TOWER* 119.0 (CTAF) 306.95	GND CON 121.7	CLNC DEL 121.7
------------------------	---	---	-------------------------	--------------------------



SE-3, 25 FEB 2021 to 25 MAR 2021

SE-3, 25 FEB 2021 to 25 MAR 2021



ELEV 17	TDZE 15
---------	---------

REIL Rwy 5, 13, 23 and 31
MIRL Rwy 5-23 and 13-31

FAF to MAP 4.8 NM

Knots	60	90	120	150	180
Min:Sec	4:48	3:12	2:24	1:55	1:36

CATEGORY	A	B	C	D
S-13	620-1	605 (700-1)	620-1 ³ / ₄	605 (700-1 ³ / ₄)
C CIRCLING	620-1	603 (700-1)	620-1 ³ / ₄	680-2 663 (700-2)
JEPUP FIX MINIMUMS				
S-13	480-1	465 (500-1)	480-1 ³ / ₈	465 (500-1 ³ / ₈)
C CIRCLING	540-1	523 (600-1)	600-1 ¹ / ₂ 583 (600-1 ¹ / ₂)	680-2 663 (700-2)