

WAAS CH <b>69424</b> <b>W23A</b>	APP CRS <b>231°</b>	Rwy Idg TDZE Apt Elev	<b>6007</b> <b>16</b> <b>17</b>
--	------------------------	-----------------------------	---------------------------------------

# RNAV (GPS) RWY 23

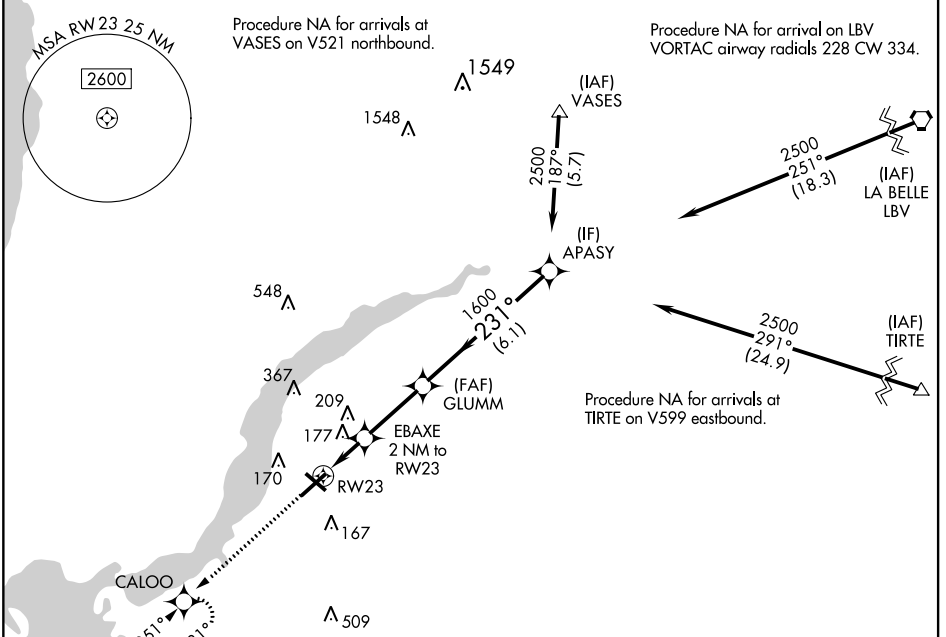
PAGE FIELD (FMY)

RNP APCH.

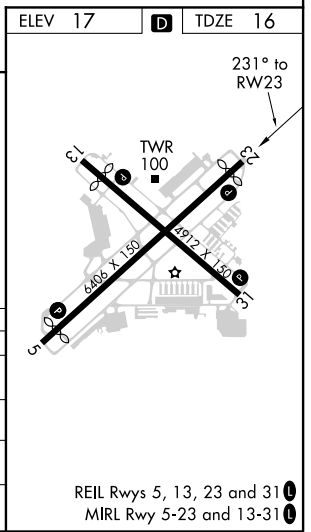
▼ When Circling to Rwy 31 at night, operational VGSI required, remain on or above VGSI glidepath until threshold. Rwy 23 helicopter visibility reduction below 3/4 SM NA. For uncompensated Baro-VNAV systems, LNAV/VNAV NA below 4°C or above 54°C.

MISSED APPROACH: Climb to 2000 direct CALOO and hold.

ATIS <b>123.725</b>	FORT MYERS APP CON ★ <b>126.8 306.2</b>	PAGE TOWER ★ <b>119.0 (CTAF) 0 306.95</b>	GND CON <b>121.7</b>	CLNC DEL <b>121.7</b>
------------------------	--	--	-------------------------	--------------------------



ELEV 17	D	TDZE 16		
2000 ↑ CALOO	APASY			
*LNAV only.	GLUMM 1600			
RW23	2500			
*1.2 NM to RW23	231°			
*700	1600			
GP 3.00° TCH 55				
1.2 NM	0.8 NM	2.8 NM	6.1 NM	
CATEGORY	A	B	C	D
LPV DA	274-3/4		258 (300-3/4)	
LNAV/VNAV DA	377-1		361 (400-1)	
LNAV MDA	440-1	424 (500-1)	440-1 1/4	424 (500-1 1/4)
CIRCLING	540-1	523 (600-1)	600-1 1/2 583 (600-1 1/2)	680-2 663 (700-2)



SE-3, 25 FEB 2021 to 25 MAR 2021

SE-3, 25 FEB 2021 to 25 MAR 2021