

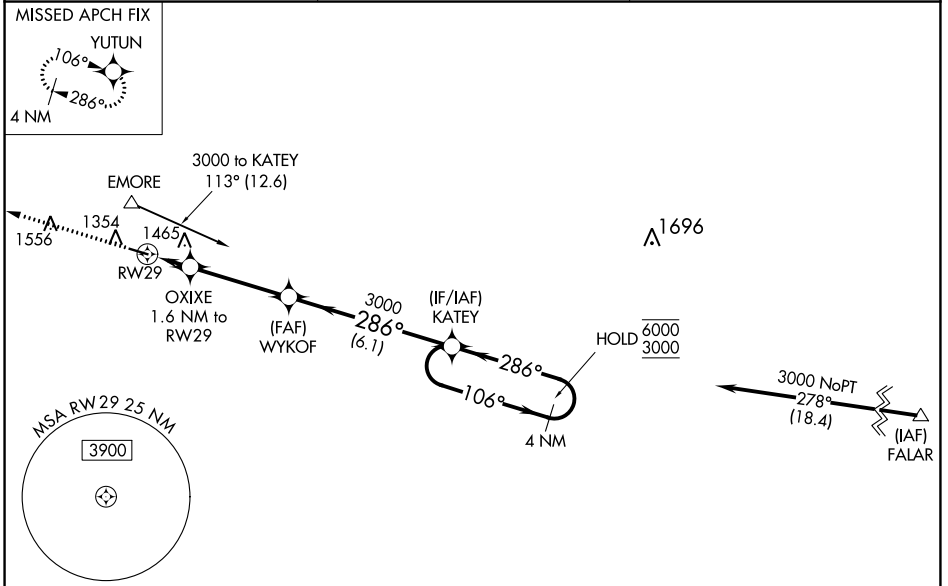
WAAS CH 70529 W29A	APP CRS 286°	Rwy Idg TDZE Apt Elev	4001 1277 1277
--	------------------------	-----------------------------	---

RNAV (GPS) RWY 29

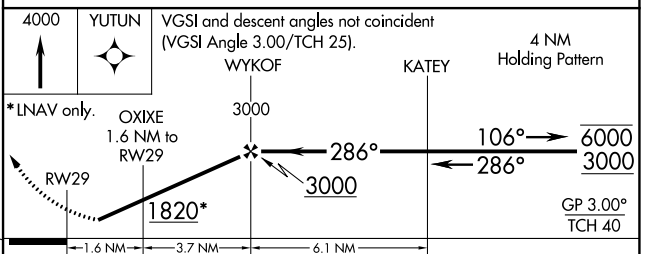
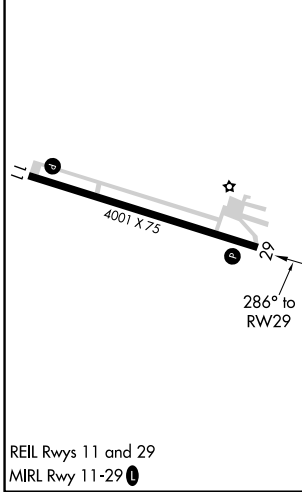
FILLMORE COUNTY (FKA)

RNP APCH.	<p>MISSED APPROACH: Climb to 4000 direct YUTUN and hold</p>
<p>⚠ Rwy 29 helicopter visibility reduction below $\frac{3}{4}$ SM NA. For uncompensated Baro-VNAV systems, LNAV/VNAV NA below -17°C or above 54°C.</p>	

AWOS-3 118.55	ROCHESTER APP CON* 119.8 251.125	CTAF 122.9
-------------------------	--	----------------------



ELEV 1277	TDZE 1277
-----------	-----------



CATEGORY	A	B	C	D
LPV DA	1527-1 250 (300-1)			NA
LNAV/VNAV DA	1550-1 273 (300-1)			NA
LNAV MDA	1780-1	503 (600-1)	1780-1 $\frac{3}{8}$ 503 (600-1 $\frac{3}{8}$)	NA
C CIRCLING	1780-1 503 (600-1)	1900-1 623 (700-1)	1900-1 $\frac{3}{4}$ 623 (700-1 $\frac{3}{4}$)	NA

NC-1, 25 FEB 2021 to 25 MAR 2021

NC-1, 25 FEB 2021 to 25 MAR 2021