

WAAS CH 40024 W34A	APP CRS 341°	Rwy Idg TDZE Apt Elev	3402 108 113
--	------------------------	-----------------------------	---

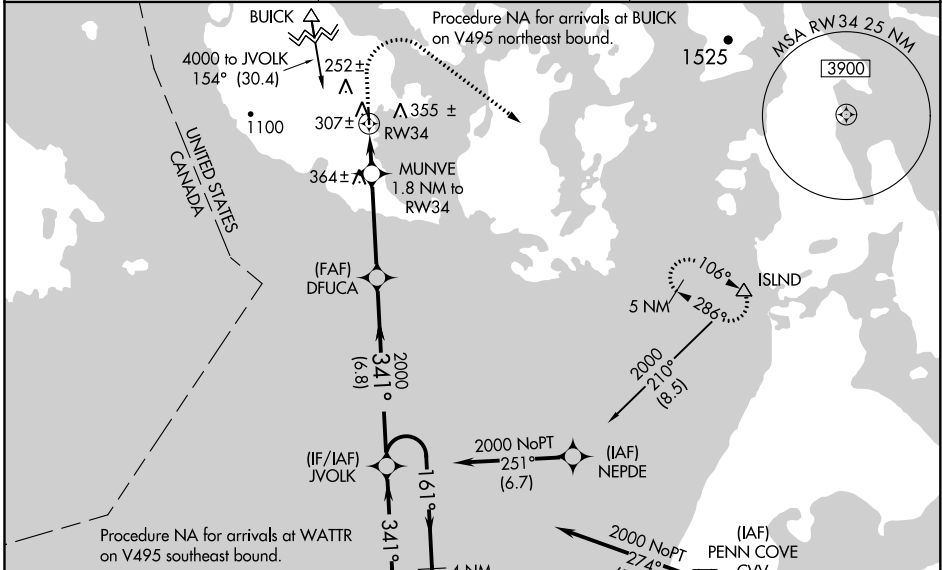
RNAV (GPS) RWY 34

FRIDAY HARBOR (FHR)

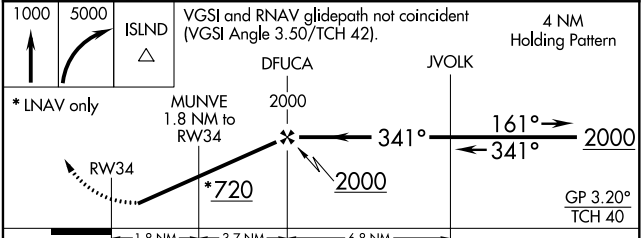
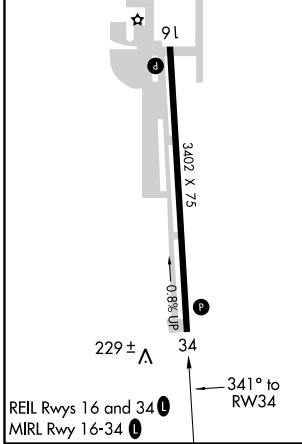
⚠ When VGSI inop, Circling Rwy 16 NA at night. Baro-VNAV NA when using Burlington/Mount Vernon altimeter setting. For uncompensated Baro-VNAV systems, LNAV/VNAV NA below -15°C (5°F) or above 43°C (109°F). When VGSI inop, Straight-in/Circling Rwy 34 procedure NA at night. Circling NA west of Rwy 16-34. DME/DME RNP-0.3 NA. Helicopter visibility reduction below 1 SM NA. When local altimeter setting not received, use Burlington/Mount Vernon altimeter setting; increase all DA 61 feet and all MDA 80 feet; increase LPV visibility all Cats ¼ mile, LNAV/VNAV visibility all Cats ¼ mile, LNAV visibility Cat C ¼ mile, and Circling visibility Cat C ¼ mile.

MISSED APPROACH: Climb to 1000, then climbing right turn to 5000 direct ISLND and hold, continue climb-in-hold to 5000.

ASOS 135.675	WHIDBEY APP CON 118.2 285.65	CTAF 128.25
------------------------	--	-----------------------



ELEV 113	TDZE 108
----------	----------



CATEGORY	Holding Pattern			
	A	B	C	D
LPV DA	467-1 1/8	359 (400-1 1/8)		NA
LNAV/VNAV DA	513-1 1/4	405 (400-1 1/4)		NA
LNAV MDA	620-1	512 (600-1)	620-1 1/2	512 (600-1 1/2)
CIRCLING	720-1	607 (700-1)	820-2	707 (800-2)

NW-1, 25 FEB 2021 to 25 MAR 2021

NW-1, 25 FEB 2021 to 25 MAR 2021