

APP CRS	Rwy Idg	N/A
122°	TDZE	N/A
	Apt Elev	1394

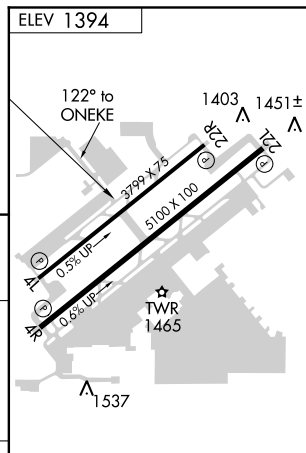
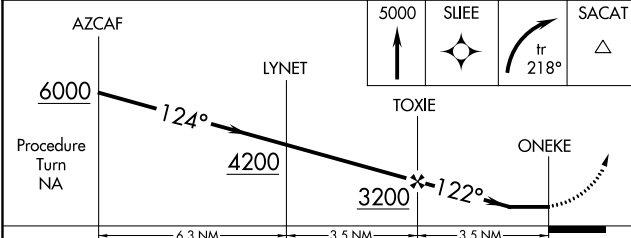
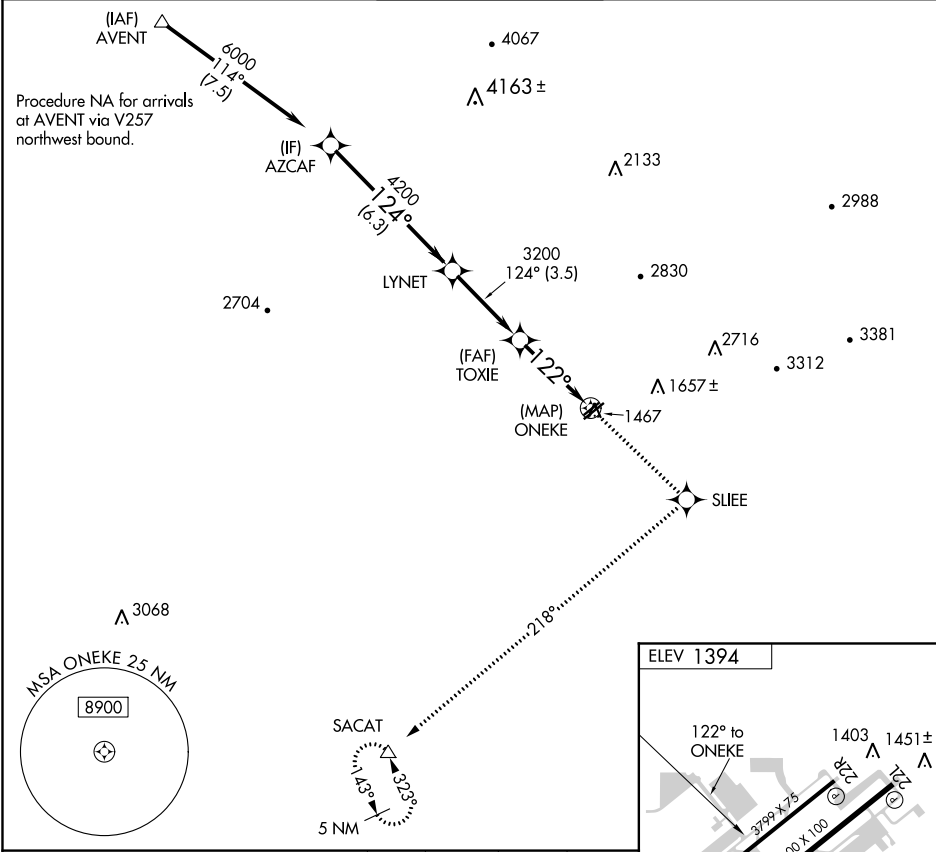
# RNAV (GPS)-B

FALCON FIELD (F'F'Z)

**▽** DME/DME RNP- 0.3 NA.  
**▲** When local altimeter setting not received, use Phoenix Sky Harbor Intl altimeter setting and increase all MDA 80 feet.

**MISSED APPROACH:** Climb to 5000 direct SLIEE and right turn on track 218° to SACAT and hold, continue climb-in-hold to 5000.

ATIS <b>118.25</b>	PHOENIX APP CON <b>120.7 239.0</b>	FALCON TOWER * <b>124.6 (CTAF) 0</b>	GND CON <b>121.3</b>	UNICOM <b>122.95</b>
-----------------------	---------------------------------------	---	-------------------------	-------------------------



CATEGORY	A	B	C	D
CIRCLING	1900-1	506 (600-1)	1900-1½ 506 (600-1½)	NA

REIL Rwy 4R, 4L and 22R  
 MIRL Rwy 4R-22L 0  
 MIRL Rwy 4L-22R

SW-4, 25 FEB 2021 to 25 MAR 2021

SW-4, 25 FEB 2021 to 25 MAR 2021