

WAAS CH 56625 W04A	APP CRS 039°	Rwy Idg TDZE Apt Elev	3799 1383 1394
--	------------------------	-----------------------------	---

RNAV (GPS) RWY 4L

FALCON FIELD (F'F'Z)

RNP APCH.

▼ When local altimeter setting not received, use Phoenix Sky Harbor Intl altimeter setting and increase all MDA 80 feet and increase LP Cat C visibility ¼ SM and LNAV Cat C visibility ⅓ SM.

▲ MISSED APPROACH: Climbing right turn to 5000 direct SACAT and hold, continue climb-in-hold to 5000.

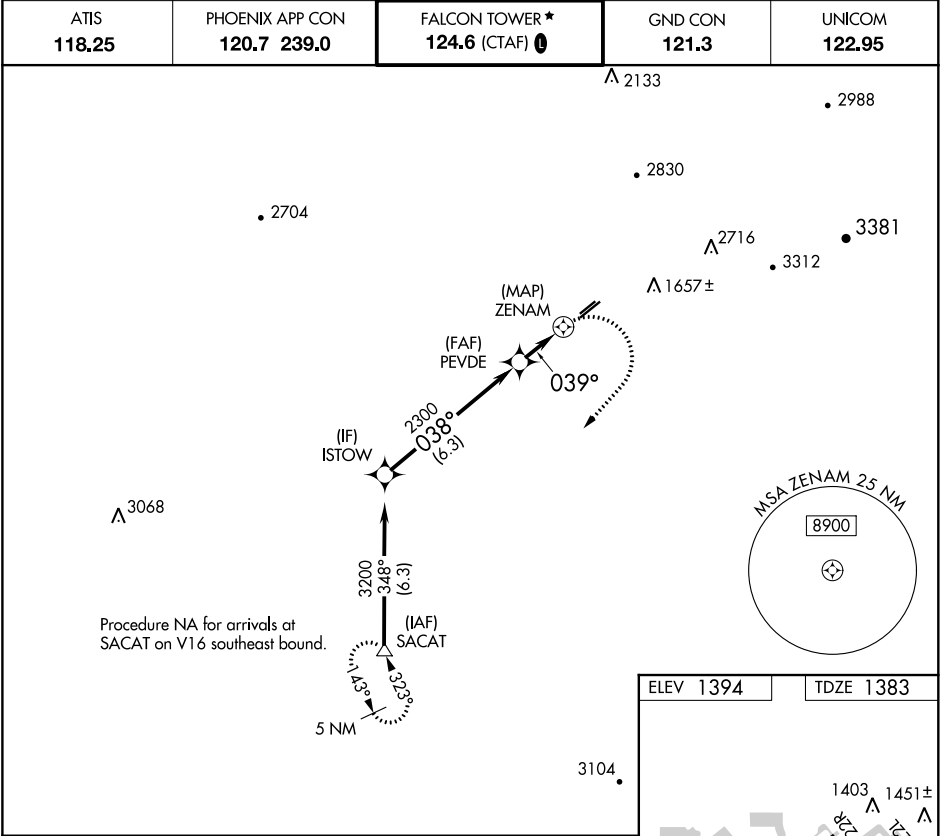
ATIS **118,25**

PHOENIX APP CON **120.7 239.0**

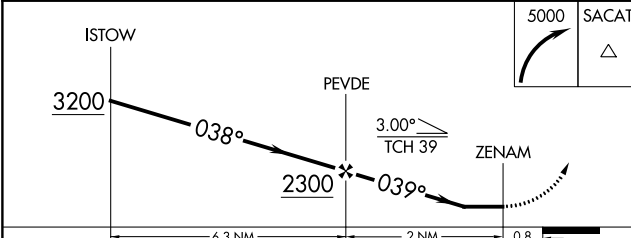
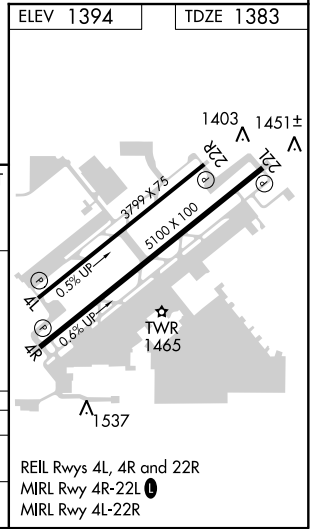
FALCON TOWER ★ **124.6 (CTAF) 0**

GND CON **121.3**

UNICOM **122.95**



Procedure NA for arrivals at SACAT on V16 southeast bound.



CATEGORY	A	B	C	D
LP MDA	1780-1	397 (400-1)	1780-1⅛ 397 (400-1⅛)	NA
LNAV MDA	1800-1	417 (500-1)	1800-1¼ 417 (500-1¼)	NA

SW-4, 25 FEB 2021 to 25 MAR 2021

SW-4, 25 FEB 2021 to 25 MAR 2021