

WAAS CH <b>65920</b> <b>W13A</b>	APP CRS <b>128°</b>	Rwy Idg <b>5639</b> TDZE <b>1182</b> Apt Elev <b>1183</b>
--	------------------------	---

# RNAV (GPS) RWY 13

FERGUS FALLS MUNI-EINAR MICKELSON FIELD (F'FM)

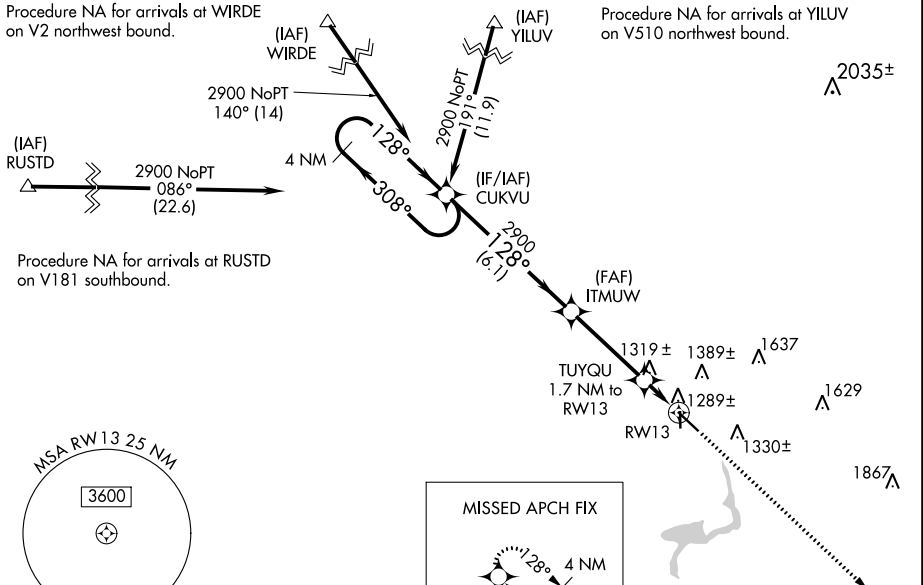
For uncompensated Baro-VNAV systems, LNAV/VNAV NA below -17°C (2°F) or above 36°C (96°F). DME/DME RNP-0.3 NA. When local altimeter setting not received, use Wahpeton altimeter setting, and increase all DA 74 feet, increase all MDA 80 feet. Increase LPV 1/8 all Cats, and LNAV/VNAV visibility 1/4 mile all Cats; increase LNAV Cat C and D and Circling Cat C and D visibility 1/4 mile. Baro-VNAV and VDP NA when using Wahpeton altimeter setting.

**MISSED APPROACH:**  
Climb to 2900 direct IGAKE and hold.

AWOS-3 <b>110.4</b>	MINNEAPOLIS CENTER <b>126.1 269.2</b>	UNICOM <b>122.8</b> (CTAF) <b>0</b>
------------------------	--	--

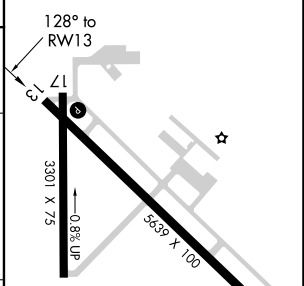
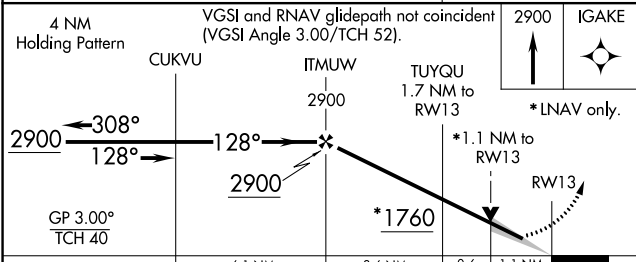
Procedure NA for arrivals at WIRDE on V2 northwest bound.

Procedure NA for arrivals at YILUV on V510 northwest bound.



Procedure NA for arrivals at RUSTD on V181 southbound.

ELEV 1183	TDZE 1182
-----------	-----------



CATEGORY	A	B	C	D
LPV DA		1382-3/4	200 (200-3/4)	
LNAV/VNAV DA		1470-7/8	288 (300-7/8)	
LNAV MDA	1580-1	398 (400-1)	1580-1/8	398 (400-1/8)
CIRCLING	1640-1 457 (500-1)	1740-1 557 (600-1)	1740-1/2 557 (600-1/2)	1880-2/4 697 (700-2/4)

REIL Rwy 13 and 35 **0**  
MIRL Rwy 13-31 and 17-35 **0**

NC-1, 25 FEB 2021 to 25 MAR 2021

NC-1, 25 FEB 2021 to 25 MAR 2021