

WAAS CH 81802 W23A	APP CRS 229°	Rwy Idg 5819 TDZE 296 Apt Elev 306
--	------------------------	---

RNAV (GPS) Z RWY 23

FREDERICK MUNI (FDK)

RNP APCH.

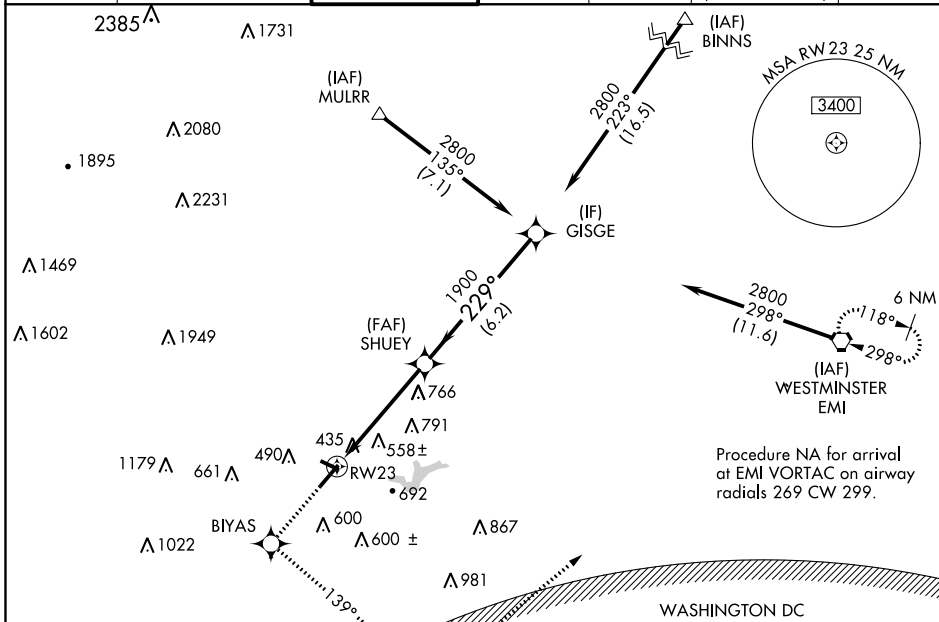
⚠ Rwy 23 helicopter visibility reduction below 3/4 SM NA. Circling Rwy 30 NA at night. For uncompensated Baro-VNAV systems, LNAV/VNAV NA below -15°C or above 54°C. Inop table does not apply to LPV, LNAV/VNAV all Cats, and LNAV Cat C.

ODALS



MISSED APPROACH: Climb to 3000 direct BIYAS WP and via 139° track to FEDIT WP and via 059° track to EMI VORTAC and hold.

ATIS 124.875	POTOMAC APP CON 125.525 291.625	FREDERICK TOWER ★ 132.4 (CTAF) 0	GND CON 121.975	CLNC DEL 121.975	CLNC DEL 126.9 (When twr closed)	UNICOM 122.95
------------------------	---	--	---------------------------	----------------------------	---	-------------------------

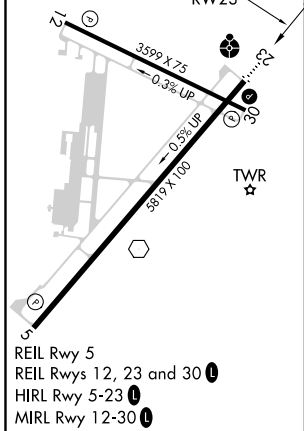


Procedure NA for arrival at EMI VORTAC on airway radials 269 CW 299.

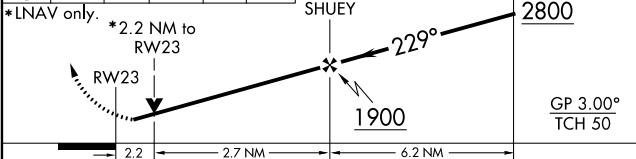
WASHINGTON DC METROPOLITAN SFRA

WARNING -- WASHINGTON DC SFRA.
CTC POTOMAC APP CON

ELEV 306	TDZE 296
----------	----------



3000 BIYAS	FEDIT	EMI	VGSI and RNAV glidepath not coincident (VGSI Angle 3.00/TCH 54).
------------	-------	-----	--



CATEGORY	A	B	C	D
LPV DA	690-1½ 394 (400-1½)			
LNAV/VNAV DA	1020-2½ 724 (800-2½)			
LNAV MDA	1020-¾ 724 (800-¾)	1020-2 724 (800-2)	1020-2¼ 724 (800-2¼)	1020-2½ 724 (800-2½)
C CIRCLING	1020-1 714 (800-1)	1100-2¼ 794 (800-2¼)	1200-2¾ 894 (900-2¾)	

NE-3, 25 FEB 2021 to 25 MAR 2021

NE-3, 25 FEB 2021 to 25 MAR 2021