

FORT EUSTIS, VIRGINIA

RNAV (GPS) RWY 14

APCH CRS	Rwy Idg	3025
139°	TDZE	11
	Arprt Elev	11

AL-5211 [USA]

FELKER AAF (KFAP)

DME/DME RNP - 0.3 NA

ODALS

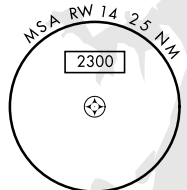
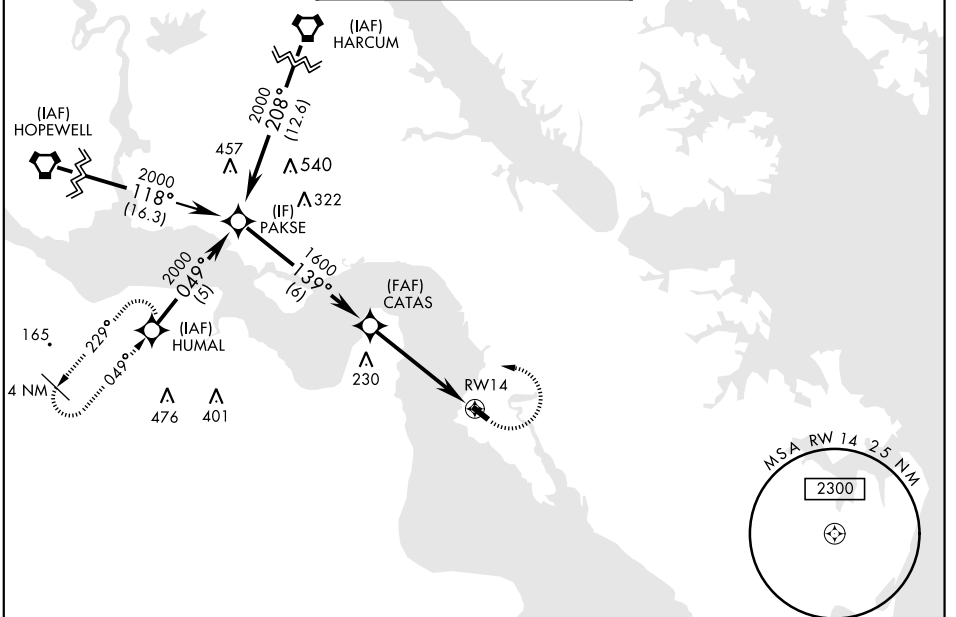
MISSED APPROACH: Climbing left turn to 2000 direct HUMAL and hold.

When local altimeter setting not received, use Newport News/Williamsburg Intl altimeter setting. Visibility reduction by helicopters NA.

NORFOLK APP CON
125.7 335.625

FELKER TOWER ★
126.3 (CTAF) 0 269.25

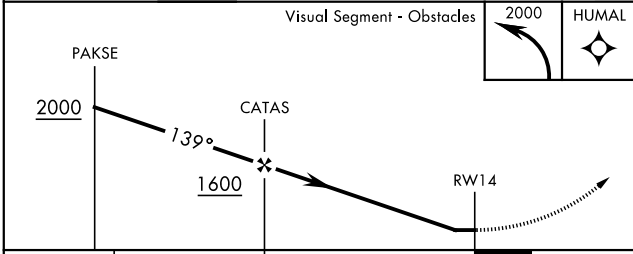
GND CON
121.35 229.4



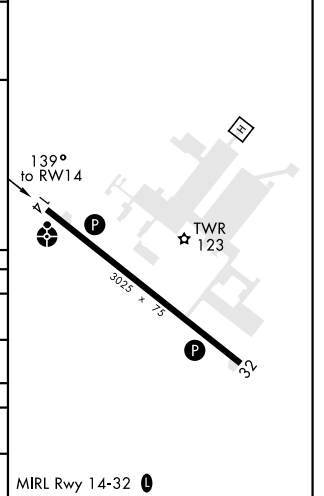
NOT FOR CIVIL USE

ELEV 11

TDZE 11



CATEGORY	A	B	C	D
LNAV MDA	420-¾	409 (500-¾)		NA
CIRCLING	440-1 429 (500-1)	480-1 469 (500-1)		NA
NEWPORT NEWS/WILLIAMSBURG INTL ALTIMETER				
LNAV MDA	440-¾	429 (500-¾)		NA
CIRCLING	460-1 449 (500-1)	500-1 489 (500-1)		NA



MRL Rwy 14-32 0

FORT EUSTIS, VIRGINIA

37°08'N-76°37'W

FELKER AAF (KFAP)

Amdt 2B 20JUN19

RNAV (GPS) RWY 14

NE-3, 25 FEB 2021 to 25 MAR 2021

NE-3, 25 FEB 2021 to 25 MAR 2021