

WAAS CH 86429 W12A	APP CRS 114°	Rwy Idg TDZE Apt Elev	3899 811 813
--	------------------------	-----------------------------	---

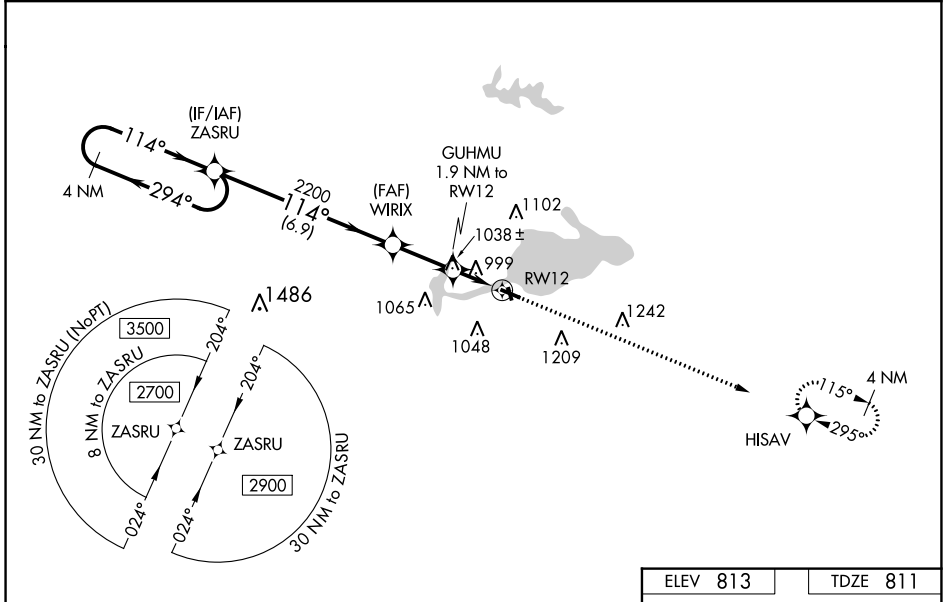
RNAV (GPS) RWY 12

SHAWANO MUNI (E/ZS)

⚠ Baro-VNAV NA when using Green Bay altimeter setting. For uncompensated Baro-VNAV systems, LNAV/VNAV NA below -16°C (4°F) or above 39°C (102°F). DME/DME RNP-0.3 NA. Visibility reduction by helicopters NA. Straight-In/Circling Rwy 12 procedure NA at night. Circling to Rwy 35 NA at night. When local altimeter setting not received, use Green Bay altimeter setting and increase all DA 77 feet and all MDA 80 feet and increase LPV all Cats visibility 1/8 mile, LNAV/VNAV all Cats visibility 1/4 mile, and LNAV and Circling Cats C and D visibility 1/4 mile.

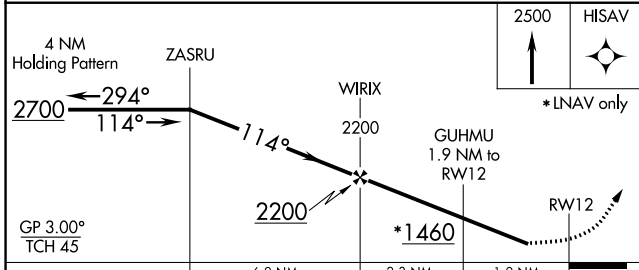
MISSED APPROACH:
Climb to 2500 direct HISAV and hold.

AWOS-3 118.65	GREEN BAY APP CON ★ 119.4 338.2	UNICOM 122.8 (CTAF) 0
-------------------------	---	---------------------------------

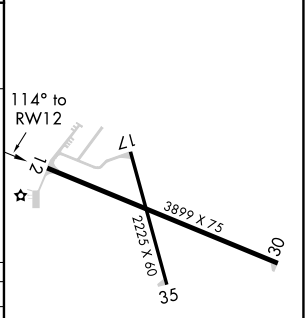


EC-3, 25 FEB 2021 to 25 MAR 2021

EC-3, 25 FEB 2021 to 25 MAR 2021



ELEV 813	TDZE 811
----------	----------



CATEGORY	A	B	C	D
LPV DA		1082-1	271 (300-1)	
LNAV/VNAV DA		1378-2	567 (600-2)	
LNAV MDA	1300-1	489 (500-1)	1300-1 3/8	489 (500-1 3/8)
CIRCLING	1340-1 527 (600-1)	1440-1 627 (700-1)	1440-1 3/4 627 (700-1 3/4)	1560-2 1/2 747 (800-2 1/2)

WATER ALL-WAY:
12000 X 1000

MIRL Rwy 12-30 and 17-35 0