

WAAS CH <b>82419</b> <b>W15A</b>	APP CRS <b>152°</b>	Rwy Idg TDZE Apt Elev	<b>5006</b> <b>132</b> <b>132</b>
----------------------------------------	------------------------	-----------------------------	-----------------------------------------

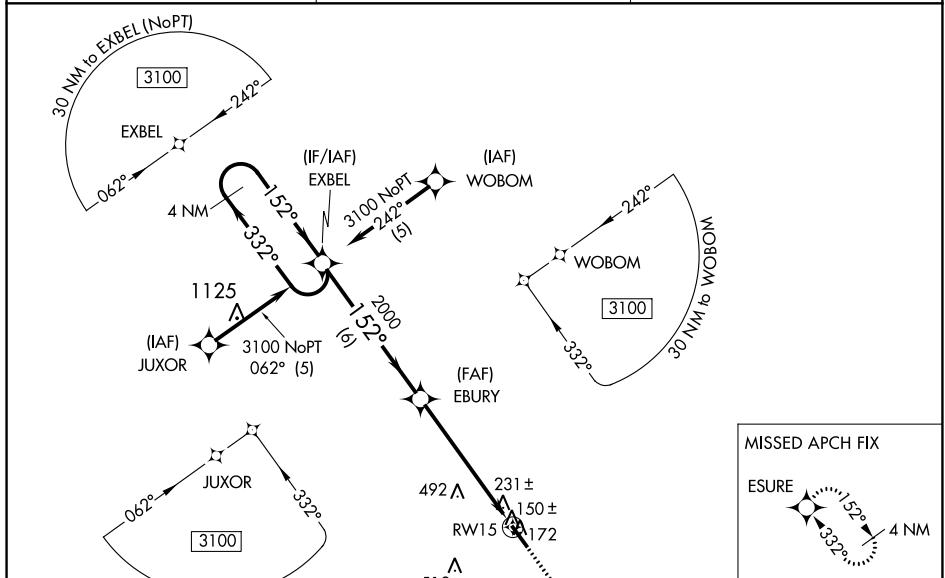
# RNAV (GPS) RWY 15

CURTIS L BROWN JR FIELD (EYF)

**⚠** DME/DME RNP-0.3 NA. Visibility reduction by helicopters NA. When local altimeter setting not received, use Fayetteville, NC altimeter setting and increase all DA 72 feet and LPV and LNAV/VNAV all Cats visibility ¼ mile; increase all MDA 80 feet and increase LNAV visibility Cats C and D ¼ mile and increase Circling visibility Cat C, ¼ mile and Cat D ½ mile. Baro-VNAV and VDP NA when using Fayetteville, NC altimeter setting. For uncompensated Baro-VNAV systems, LNAV/VNAV NA below -15°C (5°F) or above 48°C (118°F).

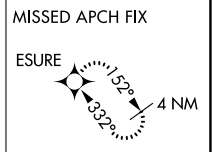
**MISSED APPROACH:** Climb to 3100 direct ESURE and hold, continue climb-in-hold to 3100.

AWOS-3P <b>119.475</b>	FAYETTEVILLE APP CON <b>133.0 290.25</b>	UNICOM <b>122.8 (CTAF) 0</b>
---------------------------	---------------------------------------------	---------------------------------

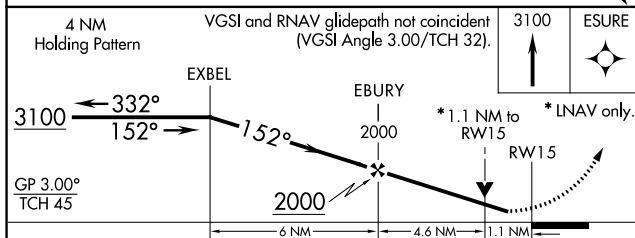


SE-2, 25 FEB 2021 to 25 MAR 2021

SE-2, 25 FEB 2021 to 25 MAR 2021



4 NM Holding Pattern	VGSI and RNAV glidepath not coincident (VGSI Angle 3.00/TCH 32).	3100 ESURE
----------------------	------------------------------------------------------------------	------------



CATEGORY	A	B	C	D
LPV DA		382-1	250 (300-1)	
LNAV/VNAV DA		529-1½	397 (400-1½)	
LNAV MDA	660-1	528 (600-1)	660-1½ 528 (600-1½)	660-1¾ 528 (600-1¾)
CIRCLING	660-1	528 (600-1)	660-1½ 528 (600-1½)	800-2 668 (700-2)

