

LOC/DME I-EWB <b>109.7</b> Chan <b>34</b>	APP CRS <b>234°</b>	Rwy Idg TDZE Apt Elev	<b>5000</b> <b>78</b> <b>79</b>
---	------------------------	-----------------------------	---------------------------------------

# LOC BC RWY 23

NEW BEDFORD RGNL (E-WB)

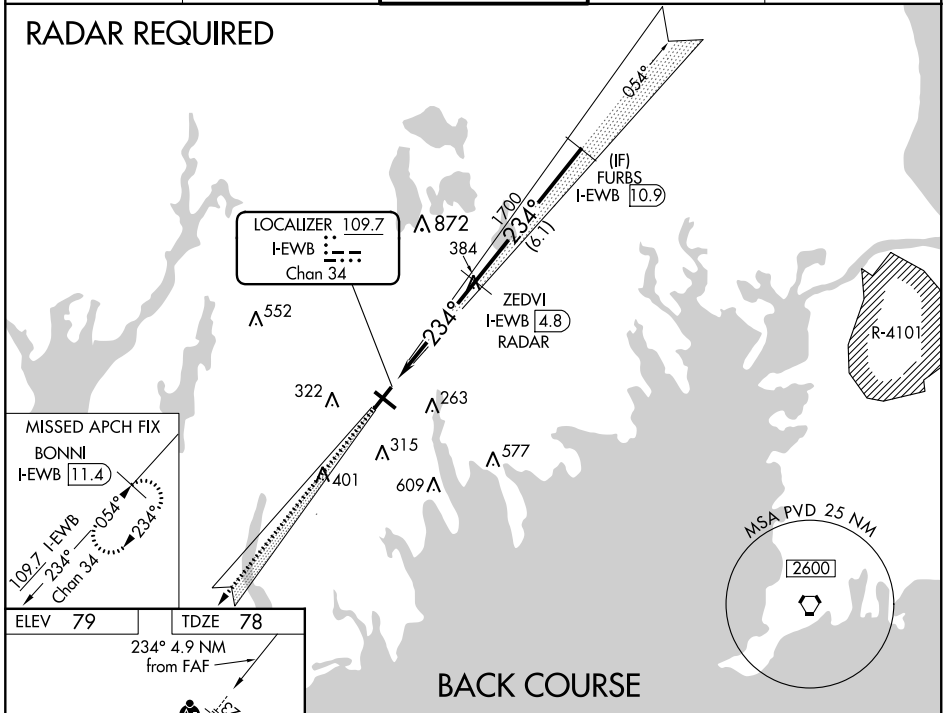
▼ When local altimeter setting not received, use Taunton altimeter setting and increase all MDA 40 feet and increase S-23 Cat C/D visibility 1/8 mile and Circling Cat D visibility 1/4 mile. VDP NA with Taunton altimeter setting. Helicopter visibility reduction below 3/4 SM NA. For inop MALSRS increase S-23 Cat A/B visibility 1/4 mile and Cat C/D visibility 3/8 mile. For inop MALSRS, when using Taunton altimeter setting, increase S-23 Cat A/B visibility 1/4 mile.

MALSRS

MISSED APPROACH:  
Climb to 2100 on I-EWB SW course to BONNI/I-EWB 11.4 DME and hold.

ATIS <b>126.85</b>	PROVIDENCE APP CON* <b>128.7 269.525</b>	NEW BEDFORD TOWER* <b>118.1 (CTAF) 0 239.0</b>	GND CON <b>121.9</b>	UNICOM <b>122.95</b>
-----------------------	---	---	-------------------------	-------------------------

## RADAR REQUIRED



ELEV 79 TDZE 78

234° 4.9 NM from FAF

MIRL Rwy 14-32  
HIRL Rwy 5-23  
REIL Rwy 32

FAF to MAP 4.3 NM					
Knots	60	90	120	150	180
Min:Sec	4:18	2:52	2:09	1:43	1:26

## BACK COURSE

2100

I-EBW SW crs BONNI I-EBW 11.4

Disregard GS indications.

I-EBW 0.5 1.3 NM to RWY 23

ZEDVI I-EBW 4.8 RADAR

FURBS I-EBW 10.9

1700 2000

≤ 3.00° TCH 46

CATEGORY	A	B	C	D
S-23	580-3/4 502 (600-3/4)		580-1 502 (600-1)	
CIRCLING	600-1 521 (600-1)	640-1 561 (600-1)	720-1 3/4 641 (700-1 3/4)	940-2 3/4 861 (900-2 3/4)

NE-1, 25 FEB 2021 to 25 MAR 2021

NE-1, 25 FEB 2021 to 25 MAR 2021