

APP CRS <b>116°</b>	Rwy Idg <b>4304</b>
	TDZE <b>869</b>
	Apt Elev <b>869</b>

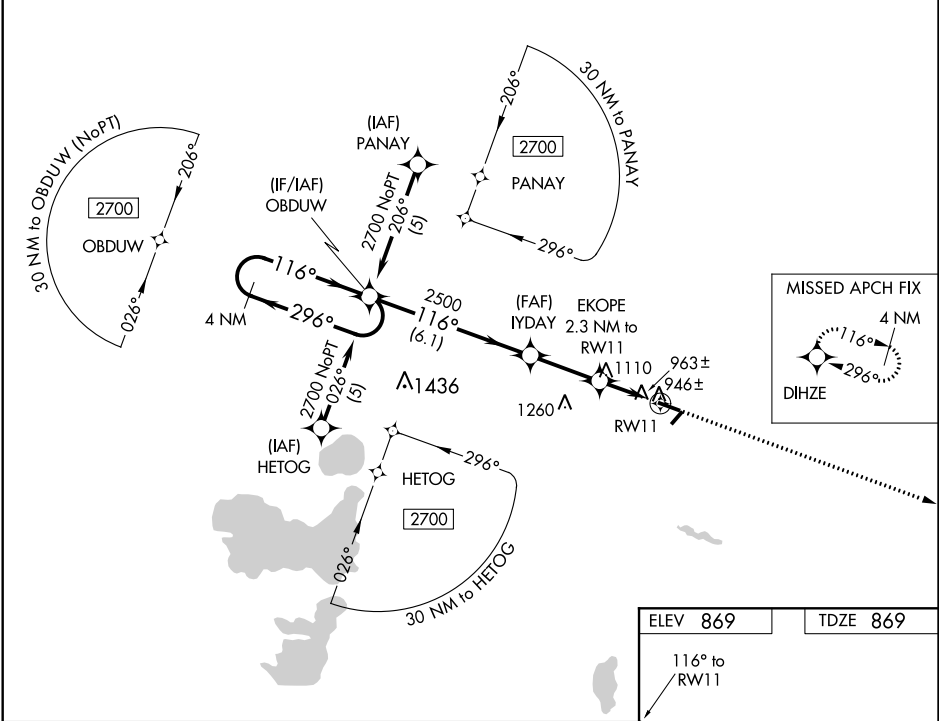
# RNAV (GPS) RWY 11

LUCE COUNTY (ERY)

**⚠** For uncompensated Baro-VNAV systems, LNAV/VNAV NA below -16°C (4°F) or above 47°C (116°F). DME/DME RNP-0.3 NA. Visibility reduction by helicopters NA. When local altimeter setting not received, use Chippewa Co Intl altimeter setting and increase DA 105 feet and all MDA 120 feet, increase LNAV/VNAV visibility ¼ mile all Cats, LNAV Cats C and D ½ mile, and Circling Cats C and D ¼ mile. Baro-VNAV NA when using Chippewa Co Intl altimeter setting.

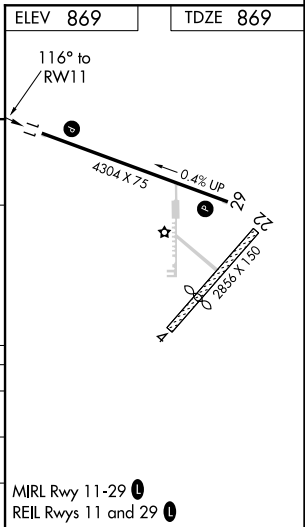
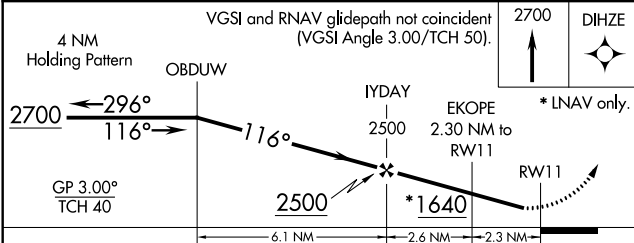
**MISSED APPROACH:**  
Climb to 2700 direct  
DIHZE and hold.

AWOS-3 <b>119.525</b>	MINNEAPOLIS CENTER <b>134.6 354.05</b>	UNICOM <b>122.8 (CTAF) 0</b>
--------------------------	---	---------------------------------



EC-1, 25 FEB 2021 to 25 MAR 2021

EC-1, 25 FEB 2021 to 25 MAR 2021



CATEGORY	A	B	C	D
LNAV/DA/VNAV	1259-1½		390 (400-1½)	
LNAV MDA	1360-1 491 (500-1)		1360-1¼ 491 (500-1¼)	1360-1½ 491 (500-1½)
CIRCLING	1360-1 491 (500-1)		1360-1½ 491 (500-1½)	1420-2 551 (600-2)