

WAAS CH 50208 W03A	APP CRS 027°	Rwy Idg 5500 TDZE 1269 Apt Elev 1276
--	------------------------	---

RNAV (GPS) RWY 3

EPHRATA MUNI (EPH)

RNP APCH.

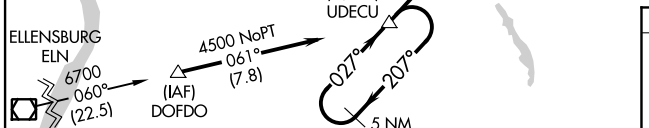
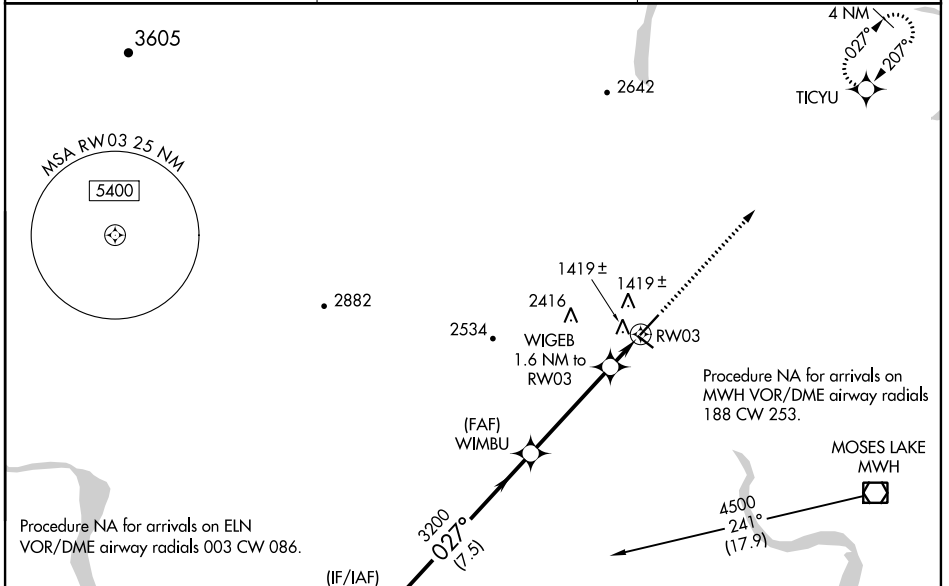
⚠ For uncompensated Baro-VNAV systems, LNAV/VNAV NA below -17°C or above 46°C. VDP and Baro-VNAV NA when using Moses Lake/Grant County Intl altimeter setting. When local altimeter setting not received, use Moses Lake/Grant County Intl altimeter setting and increase all DA/MDA 40 feet and LNAV Cat C and D visibility ½ SM.

MISSED APPROACH: Climb to 3800 direct TICYU and hold.

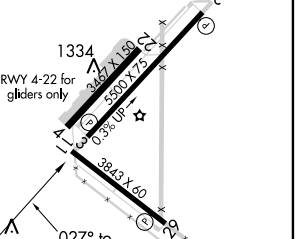
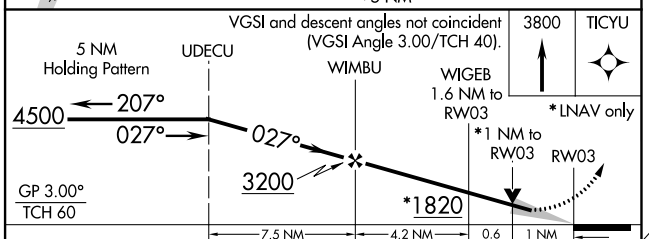
ASOS
135.775

GRANT COUNTY APP CON *
126.4 379.95

UNICOM
122.8 (CTAF) 0



ELEV 1276	TDZE 1269
-----------	-----------



CATEGORY	A	B	C	D
LPV DA		1519-1	250 (300-1)	
LNAV/VNAV DA		1689-1½	420 (500-1½)	
LNAV MDA	1680-1	411 (500-1)	1680-1¼	411 (500-1¼)

REL Rws 3, 11, 21 and 29 **0**
MIRL Rws 11-29 and 3-21 **0**

NW-1, 25 FEB 2021 to 25 MAR 2021

NW-1, 25 FEB 2021 to 25 MAR 2021