

WAAS CH 56437 W07A	APP CRS 068°	Rwy Idg 4899 TDZE 661 Apt Elev 661
--	------------------------	---

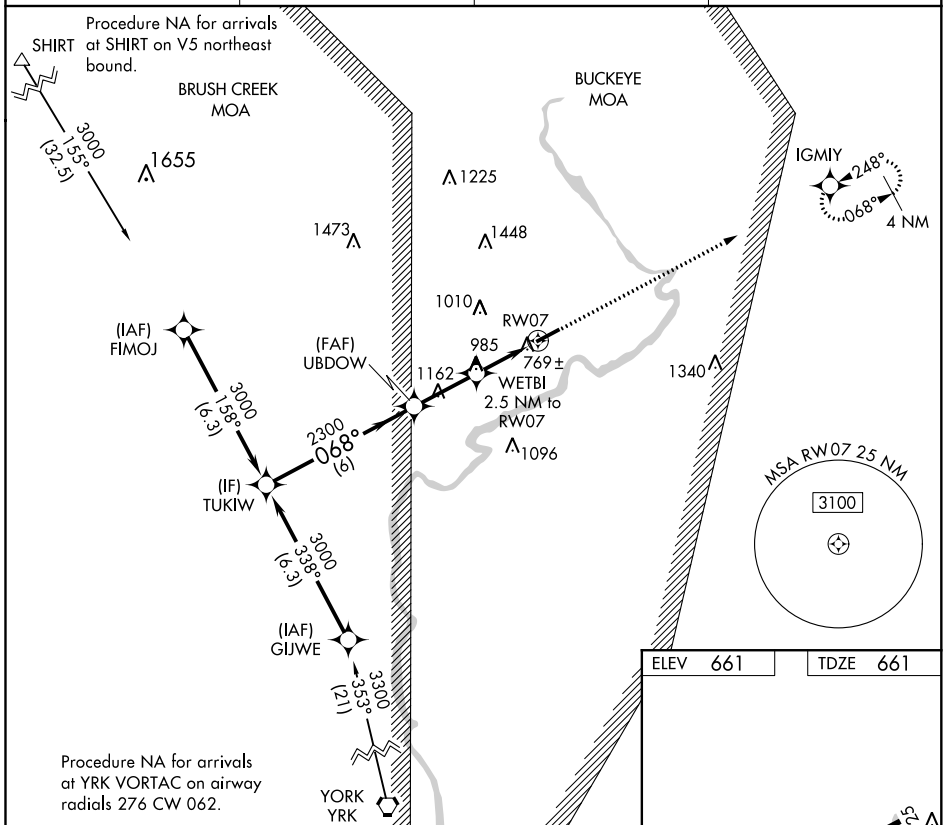
RNAV (GPS) RWY 7

PIKE COUNTY (EOP)

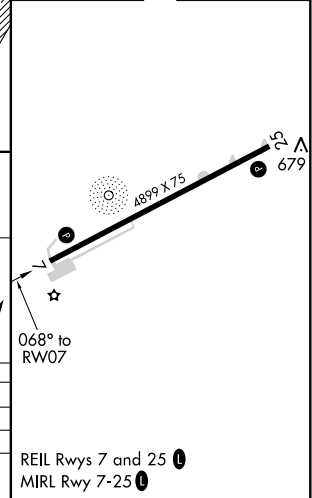
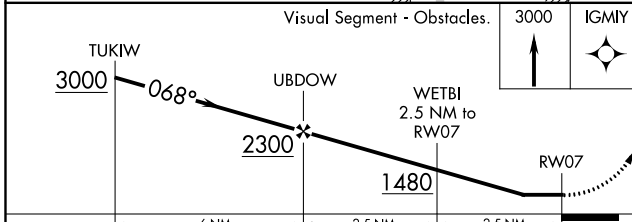
▼ DME/DME RNP-0.3 NA. Procedure NA at night. Helicopter visibility reduction below 1 SM NA.
▲ NA When local altimeter setting not received, use Chillicothe altimeter setting and increase all MDA 60 feet, increase LP and LNAV visibility Cat C/D and Circling Cat A/B/C ¼ mile.

MISSED APPROACH: Climb to 3000 direct IGMYY and hold.

AWOS-A 118.4	PMH AWOS-3 125.175	INDIANAPOLIS CENTER 135,575 290.5	UNICOM 123.0 (CTAF) 0
------------------------	------------------------------	---	---------------------------------



ELEV 661	TDZE 661
----------	----------



CATEGORY	A	B	C	D
LP MDA	1020-1 359 (400-1)			
LNAV MDA	1300-1	639 (700-1)	1300-1¾	639 (700-1¾)
C CIRCLING	1440-1 779 (800-1)	1460-1 799 (800-1)	1520-2½ 859 (900-2½)	1640-3 979 (1000-3)

EC-2, 25 FEB 2021 to 25 MAR 2021

EC-2, 25 FEB 2021 to 25 MAR 2021