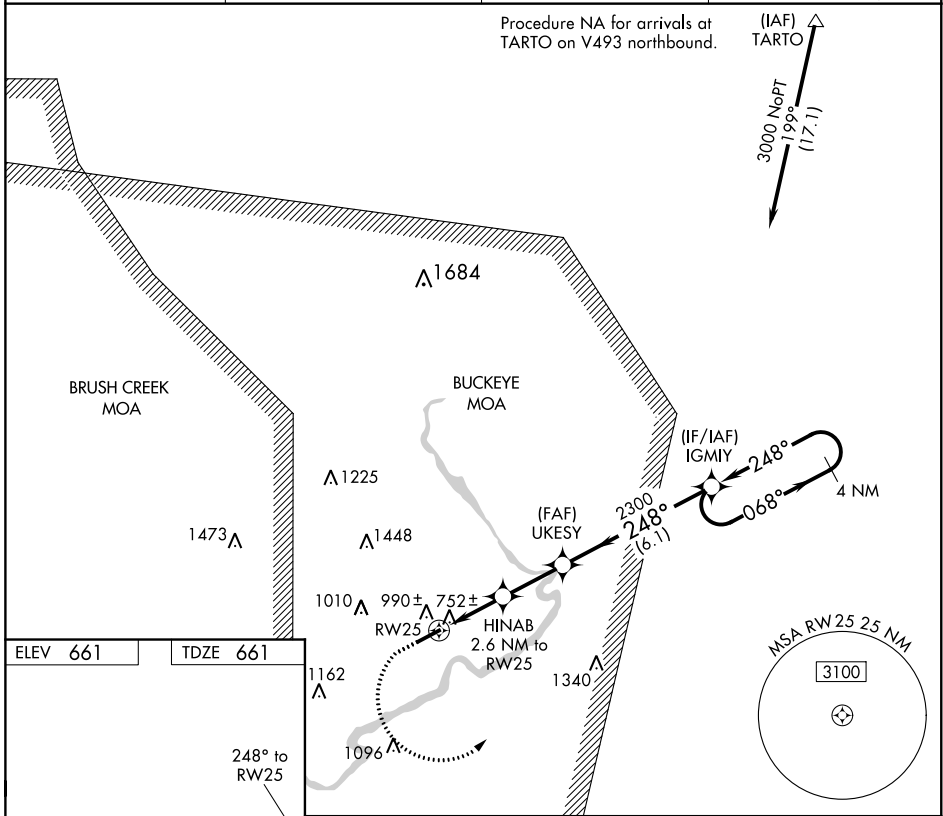


WAAS CH 97537 W25A	APP CRS 248°	Rwy Idg TDZE 661 Apt Elev 661	4899 661 661
--	------------------------	---	---

RNAV (GPS) RWY 25

PIKE COUNTY (EOP)

RNP APCH.		INDIANAPOLIS CENTER 135.575 290.5		UNICOM 123.0 (CTAF) 0	
<p>When local altimeter setting not received, use Chillicothe altimeter setting and increase all MDA 60 feet, increase LP Cat C/D visibility and LNAV Cat C/D visibility 1/8 mile, and Circling Cat A/B/C visibility 1/4 mile. Circling Rwy 7 NA at night. Rwy 25 helicopter visibility reduction below 3/4 NA.</p>		<p>MISSED APPROACH: Climb to 1100 then climbing left turn to 3000 direct IGMY and hold.</p>			
AWOS-A 118.4		PMH AWOS-3 125.175			



ELEV 661	TDZE 661	<p>248° to RWY 25</p> <p>△ 679</p> <p>4899 X 75</p>		<p>1100</p> <p>3000</p> <p>IGMY</p> <p>VGSI and descent angles not coincident (VGSI Angle 3.00/TCH 25).</p> <p>4 NM Holding Pattern</p>
<p>△ 679</p>		<p>UKESY</p> <p>HINAB 2.6 NM to RWY 25</p> <p>IGMY</p> <p>068° → 3000</p> <p>← 248°</p> <p>248°</p> <p>2300</p> <p>3.00° TCH 40</p> <p>2.6 NM 2.4 NM 6.1 NM</p>		
REIL Rwy 7 and 25 0	MIRL Rwy 7-25 0			

CATEGORY	A	B	C	D
LP MDA	1020-1 359 (400-1)			
LNAV MDA	1240-1	579 (600-1)	1240-1½	579 (600-1½)
CIRCLING	1440-1 779 (800-1)	1460-1 799 (800-1)	1520-2½ 859 (900-2½)	1640-3 979 (1000-3)

EC-2, 25 FEB 2021 to 25 MAR 2021

EC-2, 25 FEB 2021 to 25 MAR 2021