

ENID, OKLAHOMA

RNAV (GPS) RWY 17R

20198

APCH CRS	Rwy Idg	9217
163°	TDZE	1287
	Arpt Elev	1307

AL-135 (USAF)

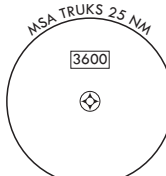
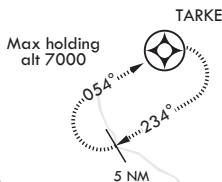
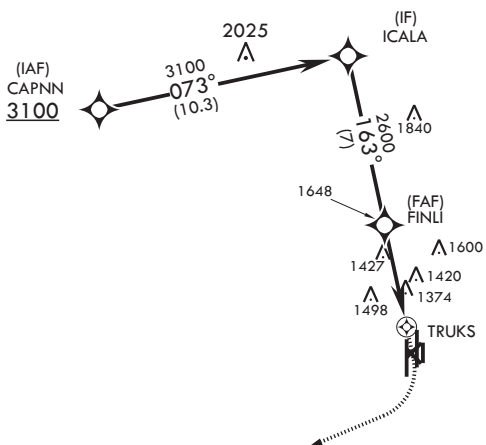
VANCE AFB (KEND)

<p>V * When ALS inop, increase CAT CDE vis to 1 1/8 miles. ** Circling not authorized at night to RWY 35R.</p>	<p>SALS</p>	<p>MISSED APPROACH: Climb to 1900, then climbing right turn to 4300 direct TARKE and hold.</p>
---	-------------	--

<p>ATIS★ 115.4 263.15</p>	<p>APP CON 125.45 388.2 EAST 126.75 346.325 WEST</p>	<p>TOWER★ 124.05 259.1</p>	<p>GND CON 121.8 289.4</p>	<p>CLNC DEL 225.4</p>
-------------------------------	--	--------------------------------	--------------------------------	---------------------------

DME/DME RNP-0.3 NA

FOR USE BY 71FTW AIRCRAFT ONLY



RADAR REQUIRED

1726

EMERG SAFE ALT 100 NM 4800

ICALA	1900	4300	TARKE	ELEV 1307	TDZE 1287
CATEGORY	A	B	C	D	E
LNAV MDA*	1680-1		393	(400-1)	
C CIRCLING**	1760-1 453 (500-1)	1820-1 1/2 513 (600-1 1/2)	1920-2 613 (700-2)	2300-3 993 (1000-3)	

ENID, OKLAHOMA
Amdt 5 15AUG19

36°20'N - 97°55'W

VANCE AFB (KEND)

RNAV (GPS) RWY 17R

SC-1, 25 FEB 2021 to 25 MAR 2021

SC-1, 25 FEB 2021 to 25 MAR 2021

REIL Rwy 17L
MIRL Rwy 17L-35R
HIRL Rwys 17C-35C, 17R-35L
35L Dual PAPI Rwys 17C-35C, 17R-35L