

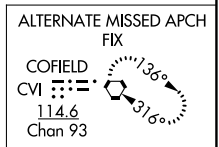
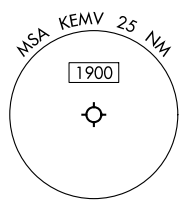
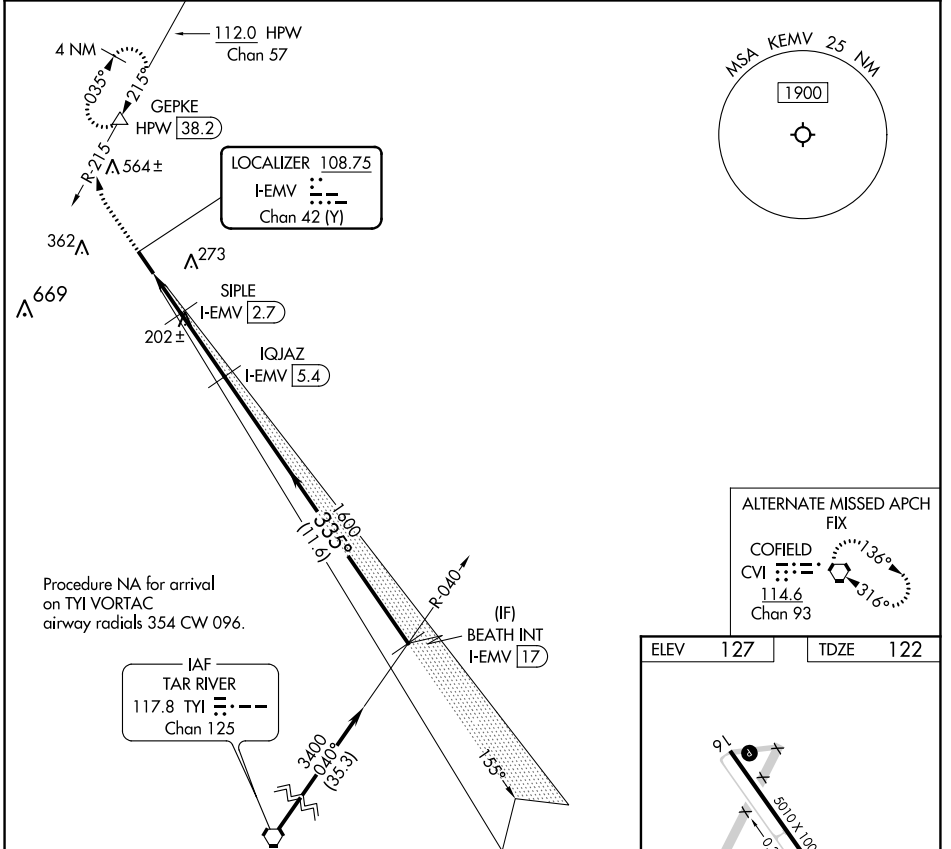
LOC/DME I-EMV <b>108.75</b> Chan 42 (Y)	APP CRS <b>335°</b>	Rwy Idg TDZE Apt Elev	<b>5010</b> <b>122</b> <b>127</b>
---	------------------------	-----------------------------	---

# LOC RWY 34

EMPORIA-GREENSVILLE RGNL (EMV)

DME required. ▼ ▲ NA	MISSED APPROACH: Climb to 600 then climbing right turn to 5000 on HPW VORTAC R-215 to GEPKE/HPW 38.2 DME and hold, continue climb-in-hold to 5000.
----------------------------	--

AWOS-3 <b>124.175</b>	WASHINGTON CENTER <b>132.025 269.4</b>	UNICOM <b>123.0 (CTAF) 0</b>
--------------------------	---	---------------------------------



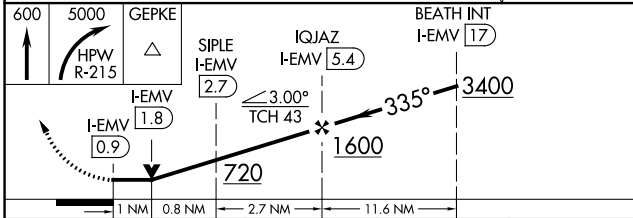
Procedure NA for arrival on TYI VORTAC airway radials 354 CW 096.



ELEV 127	TDZE 122
----------	----------

REIL Rws 16 and 34  
MIRL Rwy 16-34

FAF to MAP 4.6 NM					
Knots	60	90	120	150	180
Min:Sec	4:36	3:04	2:18	1:50	1:32



CATEGORY	A	B	C	D
S-LOC 34	460-1	338 (400-1)	680-1½ 553 (600-1½)	NA
◻ CIRCLING	580-1	453 (500-1)	680-1½ 553 (600-1½)	NA

NE-3, 25 FEB 2021 to 25 MAR 2021

NE-3, 25 FEB 2021 to 25 MAR 2021