

WAAS CH 86827 W12A	APP CRS 120°	Rwy Idg TDZE 1452 Apt Elev 1456	5596
--	------------------------	---	-------------

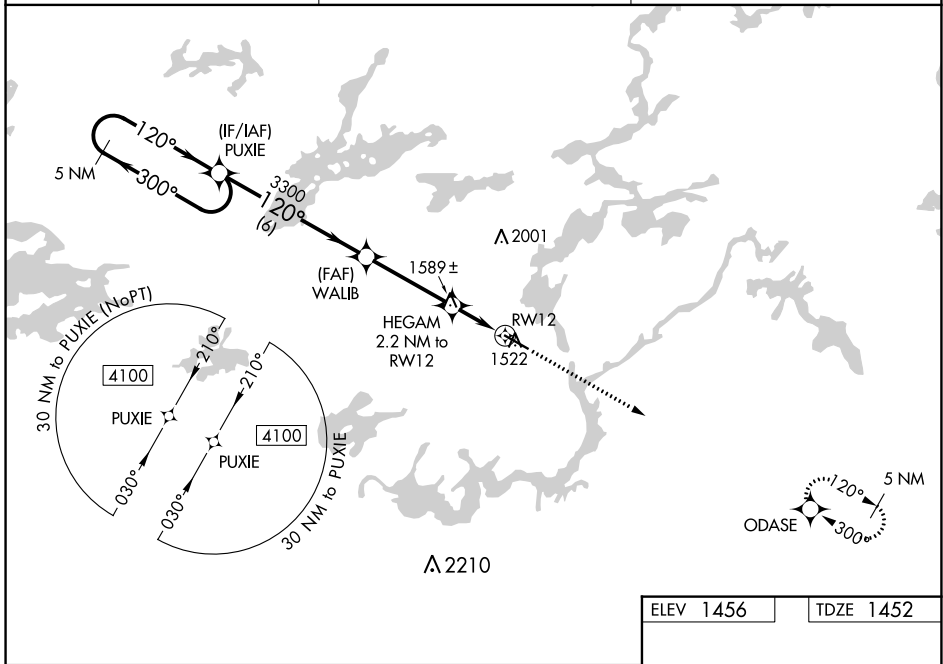
RNAV (GPS) RWY 12

ELY MUNI (ELO)

⚠ Baro-VNAV NA when using Cook altimeter setting. For uncompensated Baro-VNAV systems, LNAV/VNAV NA below -17°C (2°F) or above 34°C (93°F). DME/DME RNP-0.3 NA. VDP NA when using Cook altimeter setting. When local altimeter setting not received, use Cook altimeter setting and increase all DA/MDA 100 feet; increase LPV visibility ¼ mile all Cats, LNAV/VNAV visibility ⅓ mile all Cats, and LNAV Cat C and D visibility ¼ mile.

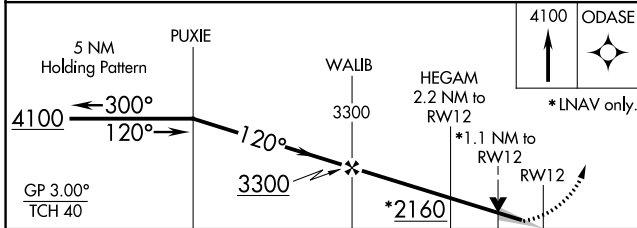
MISSED APPROACH: Climb to 4100 direct ODASE and hold.

AWOS-3 132.025	MINNEAPOLIS CENTER 127.9 281.45	UNICOM 122.8 (CTAF) ①
--------------------------	---	---------------------------------



NC-1, 25 FEB 2021 to 25 MAR 2021

NC-1, 25 FEB 2021 to 25 MAR 2021



ELEV 1456	TDZE 1452
MIRL Rwy 12-30 ① REIL Rwy 12 and 30 ①	

CATEGORY	A	B	C	D
LPV DA		1652-1	200 (200-1)	
LNAV/VNAV DA		1726-1	274 (300-1)	
LNAV MDA	1840-1	388 (400-1)	1840-1 ⅛	388 (400-1 ⅛)
CIRCLING	1920-1	464 (500-1)	1940-1 ½ 484 (500-1 ½)	2020-2 564 (600-2)