

RNAV (GPS) RWY 23

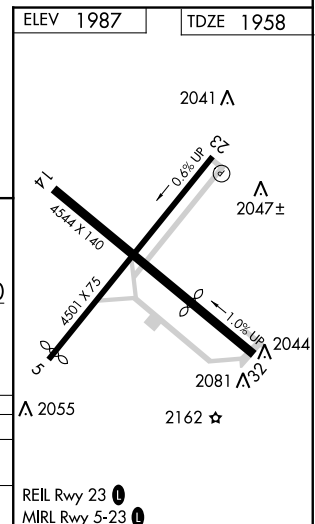
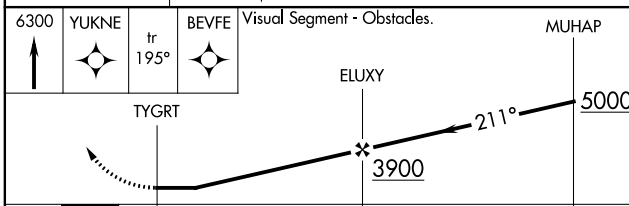
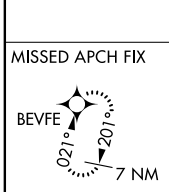
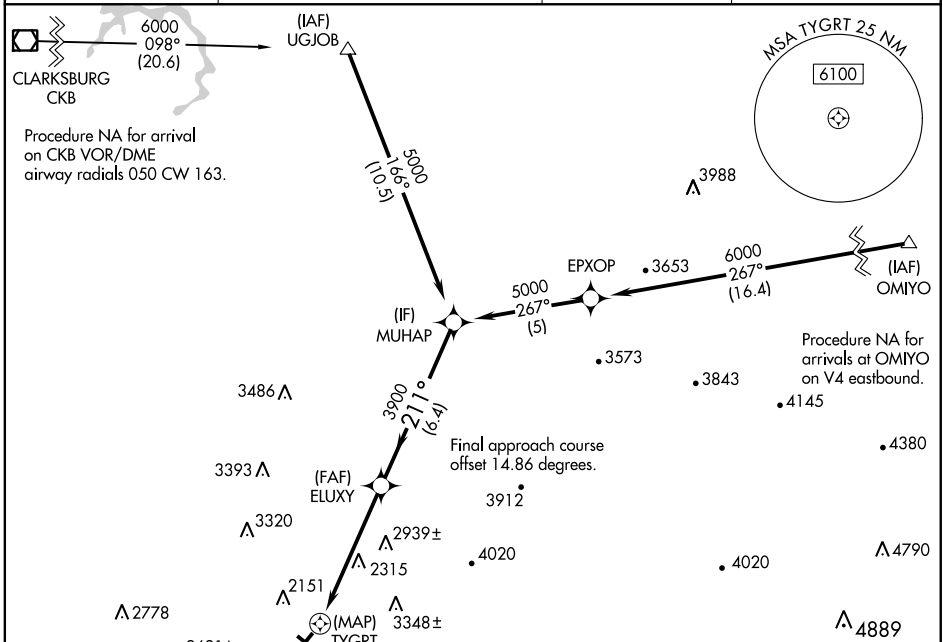
ELKINS-RANDOLPH COUNTY-JENNINGS RANDOLPH FIELD (EKN)

APP CRS	Rwy Idg	4501
211°	TDZE	1958
	Apt Elev	1987

RNP APCH. Straight-in Rwy 23 NA at night, Circling to Rwy 14, 23, 32 NA at night.
 When local altimeter setting not received, use Buckhannon altimeter setting and increase all MDAs 100 feet. Rwy 23 helicopter visibility reduction below 1 SM NA.
 -21°C

MISSED APPROACH: Climb to 6300 direct YUKNE and on track 195° to BEVFE and hold, continue climb-in hold to 6300.

ASOS 119.275	CLARKSBURG APP CON ★ 121.15 284.65	CTAF 123.6	122.9
------------------------	----------------------------------------------	----------------------	--------------



CATEGORY	A	B	C	D
LNVA MDA	3160-1¼ 1202 (1200-1¼)	3160-1½ 1202 (1200-1½)	3160-3	1202 (1200-3)
CIRCLING	3160-1¼ 1173 (1200-1¼)	3160-1½ 1173 (1200-1½)	3720-3 1733 (1800-3)	NA

REIL Rwy 23
 MIRL Rwy 5-23

RNAV (GPS) RWY 23

NE-4, 25 FEB 2021 to 25 MAR 2021

NE-4, 25 FEB 2021 to 25 MAR 2021