

VORTAC PXV 113.3 Chan 80	APP CRS 150°	Rwy Idg TDZE Apt Elev	N/A N/A 386
--	------------------------	-----------------------------	--

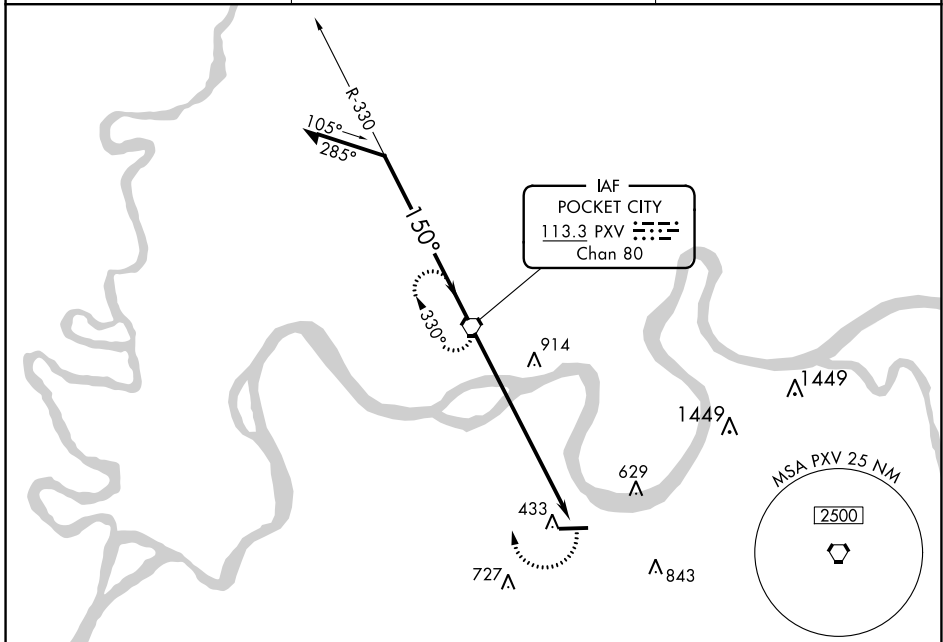
VOR-A

HENDERSON CITY-COUNTY (E.H.R.)

▲ NA If local altimeter setting not received, use Evansville altimeter setting and increase all MDA's 80 feet.

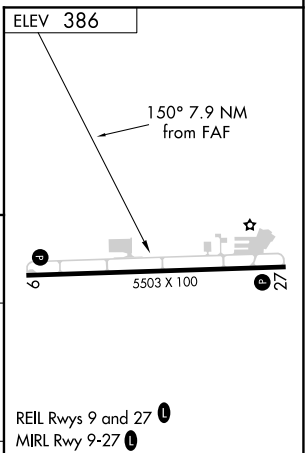
MISSED APPROACH: Climbing right turn to 2100 direct PXV VORTAC and hold.

AWOS-3PT 118.85	EVANSVILLE APP CON ★ 124.025 257.8	UNICOM 122.8 (CTAF) 0
---------------------------	--	--



SE-1, 25 FEB 2021 to 25 MAR 2021

SE-1, 25 FEB 2021 to 25 MAR 2021



Remain within 10 NM	PXV VORTAC	2100	PXV
2100	2100	7.9 NM	

CATEGORY	FAF to MAP 7.9 NM					
	A	B	C	D		
CIRCLING	920-1	534 (600-1)	920-1½ 534 (600-1½)	940-2 554 (600-2)		
	Knots	60	90	120	150	180
	Min:Seq	7:54	5:16	3:57	3:10	2:38